

UTAH DIVISION OF WILDLIFE RESOURCES

BIG GAME

A P P L I C A T I O N

— GUIDEBOOK —



2021

CONTACT US

Turn in a poacher

Phone: 1-800-662-3337

Email: turninapoacher@utah.gov

Online: wildlife.utah.gov/utip

Division offices

Offices are open 8 a.m.–5 p.m.,
Monday through Friday.

Salt Lake City

1594 W North Temple
Box 146301
Salt Lake City, UT 84114-6301
801-538-4700

Central Region

1115 N Main Street
Springville, UT 84663
801-491-5678

Northeastern Region

318 N Vernal Avenue
Vernal, UT 84078
435-781-9453

Northern Region

515 E 5300 S
Ogden, UT 84405
801-476-2740

Southeastern Region

319 N Carbonville Road, Ste A
Price, UT 84501
435-613-3700

Southern Region

1470 N Airport Road
Cedar City, UT 84721
435-865-6100

Washington County Field Office

451 N SR-318
Hurricane, UT 84737
435-879-8694



CONTENTS

- 5 Keep your license on your phone or tablet
- 6 Antlerless big game hunting
- 7 2021 season dates
- 7 Depredation hunts
- 9 Permit sales dates
- 9 2022 sportsman permits
- 10 How many permits will be available in 2021?
- 11 Gathering shed antlers or horns
- 12 License, permit and program fees
- 14 Basic requirements
- 14 Utah's Trial Hunting Program
- 15 Carry your permit
- 16 Prepare to apply
- 17 Review the hunt tables
- 17 See maps and boundaries online
- 17 Obtain permission to hunt private property
- 17 Understand the drawing order
- 18 Why bonus points matter
- 19 Why preference points matter
- 20 Multi-season hunts for deer and elk
- 21 Obtain up to three elk permits
- 21 Mandatory reporting
- 22 Hunts with special circumstances
- 24 Apply for big game permits
- 26 After you apply
- 29 Dedicated Hunter Program
- 30 Opportunities for young hunters
- 32 Hunt maps
- 38 Hunt tables
- 60 CWMU hunts
- 70 Definitions

On the cover: Bison photograph taken by Lauren Cannon in August 2019 on Antelope Island.

WHAT'S NEW

Apply for hunts: You can apply for Utah's 2021 big game hunts from Jan. 28 to March 4, 2021. The results of the big game drawing will be available on or before May 31, 2021. For additional details, see page 24.

COVID-19 and the 2021 big game hunts: Stay informed about COVID-19 pandemic-related changes that might affect your hunt. See the box on page 4 and visit wildlife.utah.gov/covid.

Fee increases for nonresident hunters: License, permit and application fees for hunters who are not Utah residents increased on July 1, 2020. Some of those increased fees are listed in the tables on page 12. To see all of Utah's license and permit fees, visit wildlife.utah.gov/licenses/fees.html.

New hunts: Starting in 2021, there will be new hunts for bighorn sheep, bison, deer, elk and pronghorn. To see which hunts have been added, look for "new hunt" next to a hunt in the tables that start on page 38.

Some hunts discontinued: All Henry Mtns management buck deer hunts and Parker Mtn pronghorn hunts have been discontinued for the 2021 season. To learn about the hunts that are still available, see the tables that start on page 38.

Changes to permit sales dates in July: Any permits remaining after the big game drawing—and all general-season elk permits—will go on sale during different days in July. For all of the permit sales dates, see the table on page 9.

New limited-entry elk hunts: Starting in 2021, there will be new handgun-archery-muzzleloader-shotgun-only (HAMS) hunts (Oct. 1–Nov. 15, 2021) on multiple limited-entry elk units. For details, see page 23 or the hunt table on page 52.

KNOW THE LAWS

This guidebook—along with the 2021 *Utah Big Game Field Regulations* guidebook (available in June 2021)—summarizes the rules and laws that regulate big game hunting in Utah. Although these books are convenient quick-reference documents for Utah big game regulations, they are not all-encompassing resources.

For an in-depth look at the state's big game hunting laws and rules, visit wildlife.utah.gov/rules.

You can use the references in this guidebook—such as *Utah Admin. Rule R657-5-24* and *Utah Code § 23-20-25*—to search the Division's website for the detailed statute or rule that underpins the guidebook summary.

If you have questions about a particular rule, call or visit the nearest Division office.

Who makes the rules?

The Utah Wildlife Board passes the rules and laws summarized in this guidebook.

There are seven board members, and each serves a six-year term. Appointed by the governor, board members are not Division employees.

The Division's director serves as the board's executive secretary but does not have a vote on wildlife policies.

Before board members make changes to wildlife rules, they listen to recommendations from Division biologists. They also receive input from the public and various interest groups via the regional advisory council (RAC) process.

If you have feedback or suggestions for board members, you can find their contact information online at wildlife.utah.gov.

Wildlife Board members

Randy Dearth
Wade Heaton
Karl Hirst
Donnie Hunter
Bret Selman

Byron Bateman, *Chair*
Kevin Albrecht, *Vice Chair*
Mike Fowlks,
Division Director & Executive Secretary

Longer hunt for general-season archery bull elk: The Utah Wildlife Board extended the general-season archery any bull elk hunt by five days. That hunt will run from Aug. 21–Sept. 22, 2021. For all season dates, see page 7.

Changes to statewide elk plan: The Utah Wildlife Board approved changes to the statewide elk-management plan. These changes increase the number of general-season any bull elk permits from 15,000 to 17,500 and also allow an unlimited number of general-season any bull elk permits for youth.

How will COVID-19 affect the big game hunts?

Although the COVID-19 pandemic has drastically affected all of our lives, there are currently no plans to close any of Utah's 2021 big game hunts because of the virus.

With that said, there are federal, state and local regulations beyond our control, and we have no way to know exactly which regulations will be in place this fall.

You can learn about those regulations—and stay informed about any other pandemic-related changes—by visiting wildlife.utah.gov/covid.

We will also use email and our social media channels to communicate changes that may affect you and your hunt. Visit wildlife.utah.gov/stay-connected.html to sign up for email updates and to follow us on Facebook, Twitter, Instagram and YouTube.

We hope you and your loved ones have fun, successful hunts in 2021—stay safe out there!

Unlimited youth any-bull elk permits:

In 2021, there will be an unlimited number of general-season any-bull elk permits (any legal weapon, rifle and multi-season) available to youth hunters. Those permits will be available for purchase starting July 13, 2021. For more information, see the article on page 30.

New options for military members: Active military personnel may be eligible to take advantage of some new opportunities if they are deployed during the big game application period. For details, see the information box on page 6 or visit wildlife.utah.gov/military.

Find updated maps and boundaries:

Use the Utah Hunt Planner to find unit maps, boundaries and information on the hunts you want to apply for. The information in the Hunt Planner will be updated in June for the 2021 big game season, but you can use its historical data to research hunting units before you apply. To learn more, see page 17.

Unit boundary and name changes:

Some hunt unit boundaries and names have changed this year, including boundaries for bighorn sheep, bison and elk units. To see which units have changed, look for “boundary change” next to a hunt in the tables that start on page 38. To find maps and descriptions of the areas you want to hunt, visit wildlife.utah.gov/huntplanner.

Season date changes: Season dates change every year, so please check them carefully before applying for hunts. You can find season dates in the hunt tables that begin on page 38.

Research antlerless hunts online: In late May 2021, visit wildlife.utah.gov/guidebooks to find all of the information you'll need to research Utah's antlerless hunts. This information includes application dates, rules, hunt tables, boundaries and maps. The antlerless application period runs from May 27–June 17, 2021.

Keep your license on your phone or tablet

We've made it easier for you to keep track of your hunting or combination license and know when it's about to expire. With our convenient mobile app, you can now download your license to a smartphone or tablet.

If a conservation officer asks to see your license, you can produce the digital copy,

which is just as valid as a paper license.

If you use the app, you will be able to easily see when your license expires.

The app is available for both Apple and Android devices. You can download it at wildlife.utah.gov/mobileapp.

Please remember that licenses are different from permits. If your hunt requires a permit, you must carry it with you while hunting.

Permits for lifetime license holders: If you're a lifetime license holder, see the box on page 28 for more information about obtaining your general-season deer permit.

Important reminders

Field regulations available in June: The 2021 *Utah Big Game Field Regulations* guidebook will be available from license agents and Division offices in June 2021. It will include the rules for both big game and antlerless hunting.

Multi-season deer hunting for youth: In order to hunt all general deer seasons (archery, muzzleloader and any legal weapon), a youth must obtain a general-season any legal weapon permit. For details, see the article on page 30.

Hunter Mentoring program: The Hunter Mentoring program allows a young person to share a mentor's permit. To learn more, see the information box on page 31 or visit wildlife.utah.gov/mentoring.

Discounted licenses for disabled veterans:

To thank our servicemen and servicewomen, the Division offers discounted hunting and combination licenses to Utah veterans who were disabled in the line of duty. For details, see page 11.

Hunting license required: Before you can apply for a 2021 big game permit, bonus point or preference point, you must have a valid Utah hunting or combination license. Please see page 15 for more information. For the exceptions available to active, deployed military members, please see the information box on page 6.

Mandatory reporting: Many big game hunters must report hunt information within 30 calendar days after the end of the hunting season (even if they did not harvest an animal). To see if you are required to report—and to learn how to report—see page 21 or visit wildlife.utah.gov/harvestreporting.

Collecting shed antlers: If you want to collect shed antlers and horns from Feb. 1 to April 15, you must complete an online course. You will receive a course-completion certificate that you must carry on your person while collecting the antlers and horns. For more information, see page 11.

Guidebook correction: If errors are found in this guidebook after it is printed, the Division will correct them in the online copy. Visit wildlife.utah.gov/guidebooks to view digital versions of all the Division's guidebooks.

Protection from discrimination: The Division receives federal financial assistance from the U.S. Fish and Wildlife Service. Under Title VI of the Civil Rights Act of 1964, Section

504 of the Rehabilitation Act of 1973, Title II of the Americans with Disabilities Act of 1990, the Age Discrimination Act of 1975, Title IX of the Education Amendments of 1972, the U.S. Department of the Interior and its bureaus prohibit discrimination on the basis of race, color, national origin, age, disability or sex. If you believe that you have been discriminated against in any program, activity or facility, or if you desire further information, please visit www.doi.gov/pmb/eo/public-civil-rights.

Private lands: The Division cannot guarantee access to any private land. Under certain circumstances, you must obtain written permission from the landowner or the landowner's authorized representative before hunting or trapping on private lands. For more information, please see *Utah Code §§ 23-20-14 and 23-20-3.5*.

Division funding: The Division is mostly funded by the sale of hunting and fishing licenses and through federal aid made possible by an excise tax on the sale of firearms and other hunting- and fishing-related equipment.

New options for active, deployed military personnel

In 2020, the Utah Wildlife Board approved two proposals that provide new opportunities for active, deployed members of the military.

If you qualify, you can now purchase a bonus or preference point, even if you missed an application period while deployed. And when you make that point purchase, the Division will waive the required combination or hunting license fee. To qualify for these exemptions, a military member must:

- Be a resident of Utah

Antlerless big game hunting

Antlerless hunting is the primary tool biologists use to control the size of big game herds.

This year, you can apply online for one or more antlerless big game permits from May 27–June 17, 2021. Plan on visiting wildlife.utah.gov in late May 2021 to see which permits are available.

Antlerless drawing results will be available on or before July 8, 2021. If any antlerless permits remain available after the drawing, you can purchase them starting July 20.

Reminder: If you obtain an antlerless permit that remains available after the drawing, you will lose any preference points that you've accrued for that species.

The *2021 Utah Big Game Field Regulations guidebook* will be available in June. That guidebook will contain information you can use in the field during your big game and antlerless hunts.

- Be deployed for 90 days or longer outside of Utah on federal orders from military command
- Not have previously received a bonus or preference point for the species and hunt type in the same year
- Otherwise be eligible to receive a bonus or preference point
- Pay a \$10 application fee per point received
- Submit an application for the exemption to DWR no later than Dec. 31 of the qualifying year of being deployed

For additional information and the application form, visit wildlife.utah.gov/military.

General-season dates

Hunt	Dates
General archery deer	Aug. 21–Sept. 17
General muzzleloader deer	Sept. 29–Oct. 7
Early general any legal weapon (rifle) deer	Oct. 13–17
General any legal weapon (rifle) deer	Oct. 23–31
General archery any bull elk	Aug. 21–Sept. 22
General archery spike elk	Aug. 21–Sept. 10
General any legal weapon (rifle) spike and any bull elk*	Oct. 9–21
General muzzleloader elk	Nov. 3–11
Youth general (rifle) any bull elk	Sept. 18–26

* On all Book Cliffs units, the any legal weapon spike bull elk hunt will only run from Oct. 9–13, 2021.

Depredation hunts

When big game animals cause damage to agricultural crops, the Division may hold hunts that are not listed in this guide. These hunts are called depredation hunts. They may occur on short notice, involve small areas and are often limited to only a few hunters.

To apply for the depredation hunter pool, visit wildlife.utah.gov/depredation.

2021 SEASON DATES

Possible habitat work in your hunt area

Throughout the year, the Division works with other government agencies—including the U.S. Forest Service and the Bureau of Land Management—to complete thousands of acres of habitat-improvement work on Utah's public lands.

Those projects range from plant removal to prescribed burns and from helicopter reseeding to large-scale planting projects. They help restore habitat for mule deer, elk, sage-grouse and other species, giving them the food and cover they need to thrive on the landscape.

Please be aware that projects occur across the state, year round. This means that sometimes a project may occur in a portion of your hunt area, during the hunt.

If this is something you're concerned about, you may want to contact the appropriate land-management agency before you apply for a particular hunt area. They may be able to give you a tentative list of projects for the coming year.

You can also see a list of past, current and proposed restoration projects at watershed.utah.gov.

2021 SEASON DATES

Extended archery season dates

Utah Admin. Rule R657-5-23

You do not need to apply for an additional permit to hunt during the extended archery seasons. As long as you obtain an archery deer or elk permit in 2021—and you complete the required extended archery ethics course—you may also hunt any of Utah's extended archery areas during the seasons listed below.

Limited-entry deer and elk archery hunters who don't harvest during the limited-entry season will also be allowed to hunt extended archery areas.

The online archery ethics course is an annual requirement for all archers who want to hunt the extended areas and seasons. To take the course, visit wildlife.utah.gov/extendedarchery before the extended seasons begin. After you successfully complete the course, print your completion certificate and keep it with you while hunting.

To see maps and boundaries for all of the extended archery areas, visit wildlife.utah.gov/huntplanner.

Hunt	Dates
Extended archery deer (either sex) in the following extended archery areas:	Sept. 18–Nov. 30
<ul style="list-style-type: none"> • Herriman South Valley • Ogden • Southwest Desert, Cedar Valley • Uintah Basin • Utah Lake • Wasatch Front • West Cache 	

Hunt	Dates
Extended archery deer (either sex) in the following extended archery areas:	Sept. 18–Oct. 15

- Nine Mile, Green River Valley
- Pine Valley, New Harmony
- Sanpete Valley
- South Wasatch

Extended archery elk (either sex) in the following extended archery areas:	Aug. 21–Dec. 15
--	-----------------

- Uintah Basin
- Wasatch Front
- West Cache

Sportsman and statewide conservation permit season dates

Long season dates—and the ability to hunt almost every hunting unit in Utah—make sportsman permits the most prized permits offered to Utah's public hunters.

Only Utah residents can apply for sportsman permits. See the information box to the right to learn more.

Hunt	Dates
Deer, elk and pronghorn on any open unit with archery equipment*‡	Aug. 21–31, 2021
Deer and elk on any open unit with any legal weapon*‡	Sept. 1, 2021–Jan. 15, 2022
Pronghorn and moose on any open unit with any legal weapon	Sept. 1–Nov. 15, 2021
Bighorn sheep and mountain goat on any open unit with any legal weapon*‡	Sept. 1–Dec. 31, 2021

2021 SEASON DATES

Hunt	Dates
Bison on any open unit with any legal weapon‡	Aug. 2, 2021–Jan. 31, 2022

Turkey on any open unit	April 1–May 31, 2021
-------------------------	----------------------

Black bear on any open unit	During the season dates listed in the 2021 Utah Black Bear Guidebook for that unit
-----------------------------	--

Cougar on any open unit or any harvest-objective unit that has been closed after meeting its objective	During the season dates listed in the 2020–21 Utah Cougar Guidebook for that unit
--	---

* You may not take an elk or Rocky Mountain bighorn sheep on the Box Elder, Pilot Mtn hunting unit.

‡ Antelope Island is not an open unit. There are only a couple of permits that authorize hunting on the island. Those permits are listed in the hunt tables on page 43 and page 57.

Permit sales dates

In July, various types of big game permits will be available for purchase at wildlife.utah.gov. See the following table for sales dates.

Permit type	Sales date
General-season archery elk permits (adults and youth)	July 8, 2021
Remaining limited-entry big game permits, if available	July 8, 2021
General-season any bull elk permits (adults and youth)	July 13, 2021
Remaining general-season deer permits, if available (also youth archery deer permits)	July 15, 2021

Permit type	Sales date
All antlerless permits, if available	July 20, 2021

General-season spike bull elk permits (adults and youth)	July 22, 2021
--	---------------

2022 sportsman permits

Utah Admin. Rules R657-41 and R657-62-24

Next year, you could be the envy of every hunter you know. If you draw a 2022 Utah sportsman permit, you'll have one of the most exciting hunting permits the state offers. Hunters want these permits because:

- They typically have an extended hunting season.
- They allow you to hunt in nearly any unit across the state. (See the footnotes on the left side of this page for additional information.)
- Only Utah residents can apply for them.

One sportsman permit is usually offered each year for each of the following species: buck deer, buck pronghorn, bull elk, bull moose, desert bighorn ram, Rocky Mountain bighorn ram, hunter's choice bison and hunter's choice mountain goat. Sportsman permits are also offered for black bear, cougar and wild turkey.

You can apply for a sportsman permit from Oct. 20 to Nov. 10, 2021. For more information about these permits, and the few restrictions that apply, please visit wildlife.utah.gov in late October 2021.

2021 SEASON DATES

CWMU season dates

The Wildlife Board has established the following timeframes for hunting bucks and bulls on Cooperative Wildlife Management Units (CWMUs). Hunters should expect to hunt at least five days within these timeframes, although the CWMU operator may allow you to hunt additional days.

Before you apply for a CWMU permit, please visit wildlife.utah.gov/cwmu. You'll find detailed information about season dates, CWMU rules, hunt success and how to contact the operator. If you draw a permit, you **must** contact the CWMU operator to confirm your season dates.

Keep in mind that whether you draw or purchase a permit, you may not obtain more than one of each of the following permits during the 2021 big game season:

- Buck deer permit
- Bull elk permit
- Buck pronghorn permit

For example, if you draw a general-season buck deer permit—and then decide you want to hunt on a CWMU instead—you must surrender your general-season permit before the

How many permits will be available in 2021?

The Utah Wildlife Board will set permit numbers for both the big game and antlerless hunts when it meets in the spring of 2021.

This meeting occurs after the big game application period and before the antlerless application period.

Division biologists will collect and analyze the most recent harvest and population data before making their recommendations to the Wildlife Board.

opening day of the season listed on your permit and before redeeming the private CWMU voucher for a permit.

Reminder: If you choose to surrender any big game permit you've drawn (to purchase/obtain a private CWMU voucher, for example), be sure to do so at least 30 days before your hunt begins in order to keep the preference or bonus points that helped you draw the original permit. You will not earn a point for the current year. **If you surrender a big game permit less than 30 days before the season opens, you will lose all of your previously accrued bonus or preference points for that species and you will not earn a point for the current year.**

As long as you surrender a big game permit before the season opens, any applicable waiting period(s) will be waived.

Important: Nonresidents may not apply for CWMU permits in the drawing. They can, however, obtain a permit voucher directly from the CWMU landowner or operator.

For more information on the CWMU program, see wildlife.utah.gov/cwmu.

Hunt	Dates
Archery hunts for buck deer, buck pronghorn and bull elk	Aug. 21–Oct. 31, 2021
Any legal weapon (rifle) hunts for buck deer, buck pronghorn, bull elk and bull moose	Sept. 1–Oct. 31, 2021
Muzzleloader hunts for buck deer	Sept. 1–Oct. 31, 2021
Muzzleloader hunts for bull elk	Sept. 1–Oct. 31, 2021

Some deer and elk CWMUs have hunting seasons outside of these timeframes. For all CWMU hunt season dates, operator names and contact numbers, visit wildlife.utah.gov/cwmu.

2021 SEASON DATES

Gathering shed antlers or horns

Utah Admin. Rule R657-5-21

You may gather shed antlers or horns—or parts of shed antlers or horns—statewide, but there is one seasonal requirement.

From Feb. 1 to April 15, 2021, you must have an antler-gathering certificate on your person while collecting shed antlers or horns. You can obtain this free certificate by visiting wildlife.utah.gov/antler-gathering.html and completing an online course. You do not need an antler-gathering certificate at any other time of the year.

Please remember that if the winter weather becomes severe, the Division may choose to close antler gathering in hard-hit areas.

Important: The antler-gathering certificate does not authorize you to trespass on closed areas or private lands to collect shed antlers or horns.

Season dates

Online course completion certificate required* Feb. 1–April 15

** You must complete this course every year.*

What if I find antlers or horns attached to a skull?

If you find a skull with the antlers or horns still attached, it's possible the animal was poached.

Do NOT pick up or move the skull, or disturb footprints or other evidence.

Instead, please take the following steps:

- Take photos from a couple of angles
- Pinpoint the location of the skull (preferably its GPS coordinates)
- Report your find to a Division office
- Provide key details in your report

The Division will send a conservation officer to investigate if the animal was poached. If it's clear that the animal died of natural causes, we may allow you to keep your find.

Discounted licenses for disabled veterans

To thank our servicemen and service-women, the Division offers discounted hunting and combination licenses to Utah veterans who were disabled in the line of duty.

The discounted hunting license is \$25.50, instead of the \$34 full price. Likewise, the discounted combination license is \$28.50, instead of the \$38 full price. Either license is good for 365 days from the day you buy it. Discounted licenses are available online or from all Division offices listed on page 2.

To purchase a discounted hunting or combination license, you must be a Utah resident and have a qualifying service-connected disability of at least 20 percent.

To apply for a license online, please visit wildlife.utah.gov/disabledvet and complete the online form. If you need assistance, please call the nearest Division office.

If you choose to visit a Division office to purchase your license, simply bring the verification of service-connected disability documentation that the Department of Veterans Affairs issued to you.

You can find additional resources for hunters and anglers with disabilities at wildlife.utah.gov/disabled-access.

LICENSE, PERMIT AND PROGRAM FEES

License fees

Resident license fees

License	Fee
365-day hunting license (age 13 and under)	\$11
365-day hunting license (ages 14–17)	\$16
365-day hunting license (ages 18–64)	\$34
365-day hunting license (age 65 and older)	\$25
365-day hunting license for disabled veterans (see the box on page 11)	\$25.50
Multi-year hunting license (age 18 and older)	\$33 per year, up to five years
365-day combination* license (ages 14–17)	\$20
365-day combination* license (ages 18–64)	\$38
365-day combination* license (age 65 and older)	\$29
365-day combination license for disabled veterans (see the box on page 11)	\$28.50
Multi-year combination* license (age 18 and older)	\$37 per year, up to five years

* A combination license allows you to hunt or fish in Utah and also allows you to fish with a second pole.

Nonresident license fees

New this year: License, permit and application fees for nonresident hunters increased on July 1, 2020. The increased license fees are listed in the following table. For a complete list of Utah's license and permit fees, visit wildlife.utah.gov/licenses/fees.html.

Nonresident license fees (continued)

License	Fee
365-day hunting license (age 17 and younger)	\$29
365-day hunting license (age 18 and older)	\$72
Multi-year hunting license (up to five years) for age 18 and older	\$71 per year, up to five years
365-day combination* license (age 17 and younger)	\$33
365-day combination* license (age 18 and older)	\$98
Multi-year combination* license (age 18 and older)	\$97 per year, up to five years

* A combination license allows you to hunt or fish in Utah and also allows you to fish with a second pole.

Permit fees

New this year: License, permit and application fees for nonresident hunters increased on July 1, 2020. The increased nonresident permit fees are listed in the following table. For a complete list of Utah's license and permit fees, visit wildlife.utah.gov/licenses/fees.html.

Please keep in mind that if you participate in the hunt drawing, you will also be charged a nonrefundable application fee for each species or bonus point you apply for. The application fee is \$10 for residents and \$15 for nonresidents. You will not be charged a permit fee unless you draw a permit.

Deer permit fees

Permit	Resident	Nonres.
General deer	\$40	\$398

Deer permit fees (continued)

Permit	Resident	Nonres.
CWMU	\$40	\$398
CWMU management buck deer	\$80	\$468
Premium CWMU	\$168	\$768
Limited entry	\$80	\$650
Multi-season limited entry	\$145	\$1,100
Premium limited entry	\$168	\$768
Multi-season premium limited entry	\$305	\$1,330
Management buck deer	\$80	\$650

Elk permit fees

Permit	Resident	Nonres.
General any bull or spike bull	\$50	\$593
Multi-season general any bull or spike bull	\$150	\$800
Youth any bull	\$50	\$593
CWMU	\$285	\$1,000
Limited entry	\$285	\$1,000
Multi-season limited entry	\$513	\$1,805

Pronghorn permit fees

Permit	Resident	Nonres.
CWMU	\$55	\$337
Limited entry	\$55	\$337

Moose permit fees

Permit	Resident	Nonres.
Bull moose	\$413	\$2,200
CWMU	\$413	\$2,200

Bison permit fees

Permit	Resident	Nonres.
Bison (not on Antelope Island)	\$413	\$2,200
Bison on Antelope Island	\$1,110	\$2,615

Bighorn sheep permit fees

Permit	Resident	Nonres.
Desert bighorn	\$513	\$2,200
Rocky Mountain bighorn	\$513	\$2,200

Mountain goat permit fees

Permit	Resident	Nonres.
Mountain goat	\$413	\$2,200

Dedicated Hunter Program fees

Adult (18 and older)		
Residents		\$195
Nonresidents		\$1,047
Lifetime license holders		\$75
Youth (12 to 17 years old)		
Residents		\$120
Nonresidents		\$814

BASIC REQUIREMENTS

Are you planning to hunt big game in Utah this year? Before you apply for a permit, make sure you meet Utah's age, hunter education, license and permit requirements.

Are you old enough?

Utah Code § 23-19-22

To hunt big game in Utah, you must be at least 12 years old.

If you are least 11 years old, you can apply for or obtain any big game permits for which you are eligible, including limited-entry and once-in-a-lifetime permits. Any 11-year-olds who apply must be 12 by Dec. 31, 2021.

Remember, you cannot hunt until you are 12 years old.

If you're younger than 18, you can apply to participate in the Utah Hunter Mentoring Program. For details on the program, see the information box on page 31 or visit wildlife.utah.gov/mentoring.

If you're 12 years old or older, you can also participate in the Trial Hunting Program. For details, see the box below.

Utah's Trial Hunting Program

Utah Admin. Rule R657-68

Have you ever wanted to bring your spouse, child or friend along on a hunt and give them a chance to try hunting? Now, they can join you on your next big game hunt.

Utah's Trial Hunting Program allows anyone over the age of 12 to try hunting for a few years—while accompanied by a licensed hunter over the age of 21—before taking a Hunter Education course.

The program applies to hunts for many different species, including all general-season big game hunts. To sign up for the program or to learn more about it, visit wildlife.utah.gov/trial.

Adults must accompany young hunters

Utah Code § 23-20-20

While hunting big game, a person under 16 years old must be accompanied by his or her parent, legal guardian or other responsible person who is 21 years of age or older and who has been approved by the parent or guardian.

The Division encourages adults to be familiar with hunter education guidelines or to complete the hunter education course before accompanying youth into the field.

While in the field, the youth and the adult must remain close enough for the adult to see and provide verbal assistance to the young hunter. Using electronic devices, such as walkie-talkies or cell phones, does not meet this requirement.

Have you passed hunter education?

Utah Code § 23-19-11 & Utah Admin. Rule R657-23

If you were born after Dec. 31, 1965, you must provide proof that you've passed a hunter education course approved by the Division before you can apply for or obtain a hunting license or a big game permit.

The only exception to this law is for individuals who are participating in the Division's Trial Hunting Program. You can find details about the program in the box to the left or by visiting wildlife.utah.gov/trial.

Proof of hunter education

You can prove that you've completed hunter education by obtaining a hunter education card (called a "blue card" in Utah) or if you have a verified hunter education number on file with the Division. The number is assigned when you complete hunter education and your blue card is issued.

How to take hunter education

To get started, you should visit wildlife.utah.gov/huntereducation. You'll see links to various traditional and online hunter education courses. Follow the instructions on the website to obtain a hunter education registration certificate (required) and to register for a course online.

If you need assistance, please contact your local Division office or call 801-538-4727.

When you finish the course, your instructor will verify your course completion in the online hunter education system. At that point, you will be able to apply for or obtain permits in the Division's hunt drawing, and your hunter education registration certificate will become your hunting license.

Approximately four to six weeks after you complete the course, you will receive your blue card by mail.

You should also keep the following in mind:

- Hunters under the age of 16 must be accompanied by an adult while hunting.
- Regardless of when a student graduates, all hunting regulations (such as season dates and bag limits) will apply.
- Hunters who are planning to hunt out of state should allow enough time for their hunter education card to arrive in the mail.

New to Utah?

If you become a Utah resident, and you've completed a hunter education course in another state, province or country, you must obtain a Utah blue card before you can buy a resident hunting license. You can obtain a Utah blue card at any Division office by providing proof that you've completed a hunter education course approved by the Division.

Do you have a license?

Utah Code §§ 23-19-1, 23-19-22 and 23-20-3

You must have a current Utah hunting or combination (hunting and fishing) license before you can apply for any big game permits, bonus points or preference points. Licenses are available at wildlife.utah.gov and from license agents and Division offices.

Be sure to take a look at the date on your license before you apply for any permits or points. As long as your license is valid on the date you submit your application, you don't have to purchase a new license for the actual hunt.

For example, assume that your license expires on June 21, 2021. If you apply before that date, you do not have to purchase a new license for your hunt in the fall. All hunting and combination licenses are valid for 365 days from the date of purchase.

New this year: All of the license, permit and application fees for nonresident hunters increased on July 1, 2020. For details, see page 12 or visit wildlife.utah.gov/licenses/fees.html.

Do you have a permit?

Utah Admin. Rule R657-62-18

To participate in any of Utah's big game hunts, you need to obtain a hunting permit. See page 16 to learn about the types of permits available in 2021.

Utah issues most of its big game permits through the big game hunt drawing. To apply for this drawing, visit wildlife.utah.gov between Jan. 28 and March 4, 2021. For additional details and important dates, see *Apply for big game permits* on page 24.

Carry your permit

If you are successful in obtaining a big game permit, you must have it on your person while hunting. You cannot alter your license or permit, nor can you sell, transfer or loan either of them to another person.

PREPARE TO APPLY

Utah Admin. Rule R657-62-18

To participate in Utah's big game hunts, you need to obtain hunting permits. The Division distributes most of those permits through the big game hunt drawing. You can apply for the drawing from Jan. 28–March 4, 2021. It will be easier to apply if you are thoroughly prepared before you begin the application process.

Residency and hunt options

Utah Code 23-13-2(37) and 23-13-2(13)

Before you apply for any big game hunts, it's important to know whether you are a legal resident of the state of Utah. Although residents and nonresidents can apply for many of the same types of permits, there are some differences. See the definition of residency on page 71 to determine whether you are a resident or a nonresident.

Residents

If you're a Utah resident, you can apply for one limited-entry permit for only **one** of the species listed below:

- Buck deer—Any one of the limited-entry buck deer hunts (see the hunt tables that start on page 43)
- Bull elk—Any one of the limited-entry bull elk hunts (see the hunt tables that start on page 48)
- Buck pronghorn—Any one of the limited-entry buck pronghorn hunts (see the hunt tables that start on page 53)

In addition to applying for a limited-entry permit for one of those three species, you can also apply for one once-in-a-lifetime permit. (See the definitions of limited-entry hunt and limited-entry permit on page 71.)

You may draw only one of the above permits each year.

Nonresidents

If you're a nonresident, you can apply to hunt all of the following:

- Buck deer—All of the limited-entry buck deer hunts open to nonresidents

(see the hunt tables that start on page 43)

- Bull elk—All of the limited-entry bull elk hunts open to nonresidents (see the hunt tables that start on page 48)
- Buck pronghorn—All of the limited-entry buck pronghorn hunts open to nonresidents (see the hunt tables that start on page 53)
- All once-in-a-lifetime species for which you are eligible (see the hunt tables that start on page 56)

You may draw only one of the above permits each year. (See the definitions of limited-entry hunt and limited-entry permit on page 71.)

Note: If you obtain a nonresident big game permit (not an antlerless permit), it also serves as a nonresident fishing license.

Both residents and nonresidents

There are additional hunting opportunities available to both residents and nonresidents. Even if you apply for one or more of the hunts listed above, you can also apply for one of the following general-season deer permits:

- An archery buck deer permit
- An any legal weapon (rifle) buck deer permit
- A muzzleloader buck deer permit

As you apply for various permits, please remember that you may not obtain more than one buck deer or one bull elk permit each year. For example, if you obtain a limited-entry deer permit, you may not buy a general-season deer permit.

Reminder: You may not obtain more than one pronghorn, moose, mountain goat, bison or bighorn sheep permit in the same year.

Do your research

It's important to nail down the details before applying for a hunt. You don't want to accidentally apply for the wrong hunting unit or season. We've provided information in this guidebook and links to online tools that can help you research your options.

Review the hunt tables

All of the big game hunts you can apply for are listed in the tables that begin on page 38. You will need to use the hunt numbers associated with the hunts in order to apply for permits. Please keep in mind that hunt names and boundaries may change from year to year.

See maps and boundaries online

You'll find detailed maps and boundary descriptions for all big game hunts at wildlife.utah.gov/huntplanner.

Research hunts on the Utah Hunt Planner

There's a useful online tool that can help you plan a successful, enjoyable hunt. The Utah Hunt Planner is located at wildlife.utah.gov/huntplanner.

During the application period (Jan. 28–March 4, 2021), you can research past hunts on the Utah Hunt Planner. Then, starting in June 2021, you can visit the Hunt Planner to see updated information for the 2021 season. If you obtain a big game permit in 2021, this is a tool that can help you have a great experience during your hunt.

Obtain permission to hunt private property

The Division cannot guarantee access to private land, and the agency does not have

the names of landowners who own property where hunts occur.

Under certain circumstances, you must obtain written permission from the landowner or the landowner's authorized representative before hunting or trapping on private lands. Ideally, you should have permission **before** you apply for a permit.

You can download a landowner permission card at wildlife.utah.gov/miscellaneous/permissioncard.html.

Understand the drawing order

Utah Admin. Rule R657-62-18

A better understanding of the drawing order may affect which permits you decide to apply for. Big game permits are drawn in the following order:

- First—Buck deer (all limited-entry permits)
- Second—Bull elk (all limited-entry permits)
- Third—Buck pronghorn (all limited-entry permits)
- Fourth—Once-in-a-lifetime permits
- Fifth—General buck deer (Lifetime License holders)
- Sixth—General buck deer (Dedicated Hunters)
- Seventh—General buck deer (youth)
- Eighth—General buck deer
- Last—Youth any bull elk

Because of the order in which permits are drawn, you will **not** be included in the drawing for a once-in-a-lifetime permit if you draw any of the following permits:

- Buck deer (any limited-entry permit)
- Bull elk (any limited-entry permit)
- Buck pronghorn (any limited-entry permit)

The definition of a limited-entry permit is listed on page 71. For more information about the permit drawing order, please visit wildlife.utah.gov/drawings.

Know how to apply as a group

Utah Admin. Rule R657-62-7 and R657-62-18

If you want to apply with your friends and family as a group, there are some important things to consider before selecting your hunt choices.

Both residents and nonresidents can apply together. However, if you're a Utah resident and you decide to apply with a nonresident, make sure nonresident permits are available for each hunt your group is applying for. If nonresident permits are not available for a hunt your group is applying for, the nonresident and everyone else in the group—including the Utah residents—will not be allowed to draw for that hunt unit.

Up to **four hunters** can apply together for available limited-entry deer, elk or pronghorn permits. Group applications are not accepted for management buck deer hunts or once-in-a-lifetime hunts.

If your group is successful in the drawing, all of the applicants in your group who have valid applications will receive a permit.

Important: If you're a youth and you want an opportunity to draw one of the permits reserved for youth, do **not** apply in a group with an adult. Young hunters can apply as part of a youth-only group.

Reminder: Up to **four youth hunters** can apply together for general-season deer hunts and youth any bull elk hunts. Please see page 30 for more information about Utah's youth hunting opportunities.

Why bonus points matter

Utah Admin. Rule R657-62-8

Utah's bonus point system has been put in place to increase your chance of drawing a big game permit. Knowing more about the points system may be helpful during the application process.

Every time you apply for a limited-entry permit, but you don't draw one, you receive a bonus point for that species.

Applying for a general-season buck deer permit will not affect your ability to obtain a bonus point for limited-entry deer. If you draw a general-season buck deer permit, you'll still receive a bonus point if you are unsuccessful in drawing a limited-entry buck deer permit.

Applying for a bonus point

Even if you're not going to hunt in 2021, you can still receive a bonus point by applying for one. To apply for a bonus point, select the appropriate bonus point code on your application and pay the application fee, which is \$10 for residents and \$15 for nonresidents. The 2021 bonus point application period is Jan. 28–March 18, 2021.

Because you apply for bonus points by species, instead of by hunt, you may apply for a bonus point even if a particular hunt isn't being offered in 2021.

To apply for a bonus point, you must be eligible for the hunt the bonus point will be awarded for. For example, if you're eligible for a limited-entry buck deer permit, you're eligible to apply for a limited-entry buck deer bonus point.

Residents

If you're a resident, you may apply for one of the following:

- One limited-entry permit and one once-in-a-lifetime permit
- One limited-entry permit and one once-in-a-lifetime bonus point
- One limited-entry bonus point and one once-in-a-lifetime permit
- One limited-entry bonus point and one once-in-a-lifetime bonus point

You may NOT apply for the following:

- A permit and a bonus point for the same species

- More than one limited-entry bonus point
- More than one once-in-a-lifetime bonus point

Nonresidents

If you're a nonresident, you may apply for permits or bonus points for all limited-entry and once-in-a-lifetime species. However, you may not apply for a permit and a bonus point for the same species.

Please remember that you may draw only one limited-entry or once-in-a-lifetime permit each year.

Groups

You can choose to submit a group application for bonus points. There can be a maximum of four people in the group.

The rules that apply to resident and nonresident bonus point applications also apply to groups. If your group contains a mix of residents and nonresidents, your residency may affect what you can apply for.

How your bonus points work

For detailed information on how your bonus points work in the drawing, visit wildlife.utah.gov/huntingpermits.

Why preference points matter

Utah Admin. Rule R657-62-9

Utah's preference point system gives hunters who don't draw a general-season buck deer permit a better chance at drawing one the following year.

Each time you apply for a general-season buck deer permit and don't draw one, you'll receive a preference point. Please keep in mind that preference points are given for a species—deer, in this case—and not for a particular hunting unit.

Applying for a preference point

Even if you won't be hunting general-season buck deer in 2021, you can still apply for a preference point by selecting code GDR on your application and paying the application fee. The application fee is \$10 for residents and \$15 for nonresidents. The application period is Jan. 28–March 18, 2021.

If you draw a general-season deer permit, you will lose your preference points and not receive an additional preference point.

Reminder: If you purchase a general-season buck deer permit that remains available after the drawing, you will lose any preference points you have for general-season buck deer.

How your preference points work in the drawing

For detailed information on how your preference points work in the drawing, visit wildlife.utah.gov/huntingpermits.

Are you eligible to apply?

Before you submit your application, make sure that you are eligible to participate in the big game drawing.

You may not apply if...

You may not apply for a hunting permit, a bonus point or a preference point if any of the following conditions apply:

- Your big game hunting privilege has been suspended.
- You're under a waiting period for the species you want to apply for.
- You've already obtained a permit for the once-in-a-lifetime species you want to apply for.
- You drew any type of limited-entry or once-in-a-lifetime permit in 2020, but you didn't submit a harvest report.

- You don't have a hunting or combination license.

Additionally, if you are a CWMU landowner association member or a spouse or dependent child, you cannot apply for your own CWMU permits in the big game drawing.

Waiting periods

Waiting periods keep successful applicants out of the drawing for a few years and give other hunters a better chance at drawing a permit.

Multi-season hunts for deer and elk

Utah Admin Rules R657-5-26 and R657-5-32

Utah offers multi-season hunts for deer or elk on select limited-entry or premium limited-entry units during all the seasons listed in the hunt tables of this guidebook. Those tables begin on page 38. Permits for those hunts are available through the big game drawing.

Eligible hunters may also purchase a multi-season general bull elk permit (any bull or spike) and hunt all three of the general elk seasons. Those permits will be available in July, on the respective any bull and spike bull permit sales dates. See the table on page 9 for all elk permit sales dates. Visit wildlife.utah.gov in early June to see purchase times and locations.

For detailed information about the multi-season general elk hunts, see the *2021 Utah Big Game Field Regulations* guidebook in June 2021.

Please keep in mind that when you hunt multiple seasons, you must use the appropriate weapon type for the season.

Limited-entry buck deer, buck prong-horn and bull elk permits

Utah Admin. Rule R657-62-18

The waiting period for limited-entry buck deer is five years. If you're in the middle of a two-year waiting period for limited-entry buck deer in 2021, your waiting period will be grandfathered in and will **not** increase to five years.

The bull elk waiting period is five years.

The waiting period for buck pronghorn is two years.

Waiting periods do not apply to general-season permits.

Note: A youth may draw only one youth any bull elk permit during his or her years as a youth.

Once-in-a-lifetime permits

Utah Admin. Rule R657-62-18

Bull moose, bison, Rocky Mountain bighorn sheep, desert bighorn sheep and mountain goat permits are once-in-a-lifetime permits. If you obtain a once-in-a-lifetime permit for a particular species, such as a bull moose, you may not apply for that permit again in the drawing.

You can still apply for other once-in-a-lifetime species that you haven't drawn a permit for.

Also, if you've been convicted of unlawfully taking a once-in-a-lifetime species, you may never apply for or obtain a permit for that species again.

Permits obtained after the drawing

Utah Admin. Rule R657-62-15

If you're under a waiting period for a certain species, you can still obtain any permit that remains for that species after the drawing, but your waiting period will start all over again.

For example, if you have two years left on your bull elk waiting period, and you buy a limited-entry bull elk permit that remains available after the drawing, you'll begin a

new five-year waiting period that will prevent you from applying for a limited-entry bull elk permit for the next five years.

If you're not already under a waiting period—and you obtain a limited-entry or once-in-a-lifetime permit that remains available after the drawing—you will lose your bonus points for that species and incur a waiting period.

Private CWMU, conservation, expo and landowner permits

Utah Admin. Rule R657-62-18

If you obtain a CWMU, conservation, expo or landowner permit from a private individual or organization—for deer, elk or pronghorn—you won't be subject to a waiting period.

If you obtain a once-in-a-lifetime permit in the expo drawing or from a conservation organization, you may not apply for that species in any other public drawing.

The rules regarding CWMU and once-in-a-lifetime permits are as follows:

- If you have obtained a once-in-a-lifetime permit in the public drawing in the past, you may buy a once-in-a-lifetime permit from a landowner or a CWMU operator.
- If you have not obtained a once-in-a-lifetime permit in the public drawing—and you buy a once-in-a-lifetime permit from a landowner or a CWMU operator—you may not obtain a permit in the public drawing for that species in the future.

Keep in mind that whether you draw or purchase a permit, you may not obtain more than one of each of the following permits during the 2021 big game season:

- Buck deer permit
- Bull elk permit
- Buck pronghorn permit

For example, if you draw a general-season buck deer permit—and then decide you want to hunt on a CWMU instead—you must surrender your general-season permit before

the opening day of the season listed on your permit and before redeeming the private CWMU voucher for a permit.

Reminder: If you choose to surrender any big game permit (in order to purchase/obtain a private permit not offered through the drawing), be sure to do so at least 30 days before your hunt begins in order to keep the preference or bonus points that helped you draw the original permit. You will not earn a point for the current year. **If you surrender a big game permit less than 30 days before the season opens, you will lose all of your previously accrued bonus or preference points for that species, and you will not earn a point for the current year.**

As long as you surrender a big game permit before the season opens, any applicable waiting period(s) will be waived.

Mandatory reporting

Reporting your hunt information is important—and required—even if you didn't harvest an animal. You must report your hunt

Obtain up to three elk permits

Utah Admin. Rule R657-5-33

In Utah, a hunter can obtain up to three elk permits each year:

- A maximum of one permit can be for a bull elk.
- A maximum of one antlerless elk permit can be obtained through the antlerless hunt drawing.
- A maximum of two antlerless elk permits can be obtained over the counter.

Even though you cannot obtain antlerless elk permits until the summer of 2021, knowing about this opportunity may affect which permits you apply for in the big game drawing.

information for any type of limited-entry or once-in-a-lifetime hunt within 30 days of the end of the hunt.

If you don't meet this requirement, you won't be allowed to apply the following year for once-in-a-lifetime, multi-season premium limited-entry, premium limited-entry, multi-season limited-entry, limited-entry, management, cactus, CWMU or handgun-archery-muzzleloader-shotgun-only permits, or for bonus points.

If you didn't submit your 2020 harvest survey questionnaire by the deadline, you can restore your eligibility to apply for a 2021 permit by paying a \$50 late fee. For more information, call 1-800-221-0659.

Hunts with special circumstances

Most of the permits you can draw through the big game hunt drawing are pretty self-explanatory. There are a couple of hunts, however, that require additional explanation.

Management buck deer hunt

Utah Admin. Rule R657-5-46

A "management buck" is a buck deer with three points or less on at least one antler, above and including the first fork, but not including the eye guard. The eye guard does not count as a point. A point is a projection that's longer than one inch, measured from its base to its tip, including damaged or broken antlers.

Management buck deer permits are available through the Utah big game drawing. If you are successful in the drawing, you must complete an online orientation course before you will receive your permit.

New this year: The management buck deer hunts on the Henry Mountains have been discontinued for the 2021 season.

Important: If you obtain a management buck deer permit, that is the **only** buck deer permit you may obtain for the 2021 season.

You will lose your bonus points and incur a waiting period of **five** years.

Why a management buck deer hunt?

Removing excess bucks—while protecting the larger bucks in the herds—is the goal of the management buck deer hunt.

The Paunsaugunt unit has high buck-to-doe ratios. Harvesting smaller-antlered bucks will preserve trophy-class bucks and provide more room for does. Having more does in the herds will result in more fawns being born. Having more fawns will help ensure that these herds remain strong and healthy into the future.

Cactus buck hunts

Utah Admin. Rule R657-5-47

You can also apply for a permit to hunt a cactus buck on the Paunsaugunt unit or on the Alton CWMU. These bucks often have unique antler growth that many hunters find fascinating.

A cactus buck is one that still has velvet covering at least 50 percent of its antlers during the season dates set by the Wildlife Board. For season dates, see the hunt table on page 44.

Important: If you obtain a cactus buck deer permit, that is the **only** buck deer permit you may obtain for the 2021 season. You will lose your bonus points and incur a waiting period of **five** years.

Early general-season buck deer hunts

For 2021, the Utah Wildlife Board approved early general-season any weapon buck deer hunts on the following general-season buck deer units:

- Chalk Creek/East Canyon/Morgan-South Rich
- Fillmore
- Kamas
- Nine Mile
- North Slope (new)

- Panguitch Lake
- Pine Valley
- Plateau, Fishlake
- Zion

These hunts will run from Oct. 13–17, 2021. The goal of these hunts is to reduce crowding and give hunters the opportunity to hunt deer and general-season elk at the same time.

Late-season, limited-entry muzzleloader deer hunts

For 2021, the Utah Wildlife Board approved late-season, limited-entry muzzleloader deer hunts on **all** general-season buck deer units. For details, see the hunt tables that begin on page 46.

These hunts will occur at the same time as the general muzzleloader elk hunt, running from Nov. 3–11, 2021.

Important: If you are successful in obtaining a permit for one of these hunts, you will lose your bonus points and incur a waiting period of **five** years.

Handgun-archery-muzzleloader-shotgun-only buck deer hunts

For 2021, the Utah Wildlife Board approved three handgun-archery-muzzleloader-shotgun-only (HAMS) hunts for buck deer. These hunts will occur from Nov. 13–28, 2021 and are considered limited-entry hunts. The hunts will take place in the following units:

- Book Cliffs, Floy Canyon
- Kaiparowits HAMS
- Morgan-South Rich

Note: These are primitive-weapon hunts—no optics allowed. The complete weapon specifications for these hunts are currently listed online in *Utah Admin. Rule R657-5-48* and will also be included in the *2021 Big Game Field Regulations Guidebook*, available in June 2021.

For more information, see the hunt tables on page 47.

Important: If you are successful in obtaining a permit for one of these hunts, you will lose your bonus points and incur a waiting period of **five** years.

New HAMS limited-entry elk hunts

For 2021, the Utah Wildlife Board approved new handgun-archery-muzzleloader-shotgun-only (HAMS) hunts (Oct. 1–Nov. 15, 2021) on these seven limited-entry elk units:

- Box Elder, Sawtooth
- Cache, North
- Nine Mile, Anthro
- Oquirrh-Stansbury
- Plateau, Barney Top/Kaiparowits
- Southwest Desert, North
- West Desert, Deep Creek

Note: These are primitive-weapon hunts—no optics allowed. The complete weapon specifications for these hunts are currently listed online in *Utah Admin. Rule R657-5-48* and will also be included in the *2021 Big Game Field Regulations Guidebook*, available in June 2021.

For details, see the hunt tables that begin on page 38.

Important: If you are successful in obtaining a permit for one of these hunts, you will lose your bonus points and incur a waiting period of **five** years.

APPLY FOR BIG GAME PERMITS

Utah Admin. Rule R657-62-18

To participate in any of Utah's big game hunts, you need a hunting permit. Your first, and possibly only, chance to obtain one of these permits is through the state's big game drawing. You will avoid unnecessary stress if you plan ahead and apply for the drawing before the last day of the application period.

Important dates

If you are planning to apply for a 2021 big game permit, please be aware of the following dates and deadlines.

January 28: Apply online

Starting Jan. 28, 2021, you can visit wildlife.utah.gov to apply for the following items:

- Big game hunting permits
- Bonus points
- Preference points

You can also call any Division office to apply.

If you're applying for a resident permit, you must be a resident on the date the permit is purchased. May 31, 2021 is considered the purchase date of the permit and the date by which you must establish residency in the state of Utah. Please see the resident definition on page 71 to learn whether you qualify as a resident.

American Express, Discover, MasterCard and VISA credit or debit cards may be used as payment, and they must be valid through June 2021. You can also use a pre-paid credit card.

Please keep in mind that the Division is not responsible for any bank charges incurred for the use of credit or debit cards. To change the credit or debit card associated with your application, call 1-800-221-0659.

When you submit your application, you'll be charged an application fee for each species or point you applied for. The application fee is \$10 for residents and \$15 for nonresidents. If you haven't bought your license yet, you'll also be charged a license fee. You will not be charged a permit fee unless you draw a permit.

March 4: Deadline for permit applications

You must apply online or by phone no later than March 4, 2021. There's an 11 p.m. MST deadline for online applications and a 5 p.m. MST deadline for phone applications. To apply, visit wildlife.utah.gov or call any Division office.

Correcting and resubmitting your application

Did you make a mistake in your application? Simply withdraw your original online application and submit a new, correct application before 11 p.m. MST on March 4, 2021.

You must have your confirmation number, your customer ID and your date of birth in order to withdraw your application. For each new application you submit, you will be charged a nonrefundable application fee. The application fee is \$10 for residents and \$15 for nonresidents.

If you need help with your online application, please call any Division office before 5 p.m. MST on March 4. A Division employee will be available to assist you.

March 18: Deadline for bonus/preference points

If you plan to apply for bonus or preference points only, the deadline is March 18, 2021 at 11 p.m. MDT.

To apply for a bonus point, select the appropriate bonus point code on your application.

Reminder: You can now submit a group application for bonus points.

To apply for a preference point, select code GDR on your application.

There is an application fee for each bonus/preference point you apply for. The application fee is \$10 for residents and \$15 for nonresidents.

For more information about bonus points, see page 18, and for more information about preference points, see page 19.

Visit wildlife.utah.gov to submit your application, and please remember that you must have a valid Utah hunting or combination license in order to apply for a point.

March 18: Deadline for withdrawing your application

If you decide not to hunt, you can withdraw your online permit application at no additional cost until 11 p.m. MDT on March 18, 2021.

The application fee is not refundable.

May 31: Drawing results available

You'll be emailed your drawing results on or before May 31, 2021. You can also learn your drawing results by visiting wildlife.utah.gov or by calling 1-800-221-0659. For more information about obtaining your results, see page 26.

To protect applicants' privacy—and to comply with the law—you'll receive access to only your own drawing results.

If you draw a permit, you'll receive your permit in the mail in July.

If your permit requires you to complete an online orientation course, you must first complete the course in order to receive your permit.

Please be aware that if you receive your permit, and then the credit card you used for payment is refused, your permit is not valid.

July sales dates for over-the-counter permits

Any limited-entry permits remaining after the big game drawing—and all general-season elk permits—will be available on the following dates in July:

- July 8: General-season archery elk permits (adults and youth)
- July 8: Remaining limited-entry big game permits, if available
- July 13: General-season any bull elk permits, including multi-season (adults and youth)
- July 15: Remaining general-season deer permits, if available (also youth archery deer permits)
- July 20: Remaining antlerless permits, if available, as well as antlerless elk-control permits and private-lands-only permits
- July 22: General-season spike bull elk permits, including multi-season (adults and youth)

Visit wildlife.utah.gov/biggame in early June to see a list of remaining permits as well as purchase times and locations.

All permits are available on a first-come, first-served basis. You must have a valid hunting license or a combination license to buy one of these permits.

Reminders: If you purchase a general-season buck deer permit that remains available after the drawing, you will lose any preference points you have for general-season buck deer. Youth will not lose any preference points they've accrued if they purchase one of the additional youth archery deer permits available on July 15.

AFTER YOU APPLY

Utah Admin. Rule R657-62-18

After the application period ends, the hunt drawing occurs. We appreciate your patience throughout the drawing process and in awaiting your results.

Updating your personal information

A lot of things can change while you're waiting to find out if you drew a permit. If you need to update your name (because of marriage or divorce), your address or the credit card number associated with your application, please call 1-800-221-0659.

Obtaining your drawing results

You will receive an email that contains your drawing results on or before May 31, 2021. You can also learn your drawing results by visiting wildlife.utah.gov or by calling 1-800-221-0659.

To protect applicants' privacy—and to comply with governmental records access laws—you'll receive access to only your own drawing results.

Obtaining permits

If you draw a permit in the big game drawing, you'll receive your permit in the mail in July.

If your permit requires you to complete an online orientation course, you must first complete the course in order to receive your permit.

Reminder: If you obtain a general-season buck deer permit over the counter (after the big game drawing), you will lose any preference points you've previously accrued for buck deer.

Please be aware that if you receive your permit, and then the credit card you used for payment is refused, your permit is not valid. To update the credit card number associated with your application, please call 1-800-221-0659.

Surrendering permits

Utah Code § 23-19-38 and Utah Admin. Rule R657-42-4

What happens if you obtain a permit and then realize you won't be able to use it?

If your season hasn't started, you should consider surrendering the permit. If you surrender early enough, you'll be able to keep your bonus points or preference points and avoid a waiting period.

Reminder: If you want to surrender your big game permit, you are strongly encouraged to do so **at least 30 days before the season opens**. The surrender process has changed and could result in the loss of previously accrued bonus or preference points. Learn more below or visit wildlife.utah.gov/refund.

Individuals

How permit surrender affects bonus and preference points

If you surrender a big game permit at least 30 days before the start of the season, you'll get all of your previously accrued bonus or preference points for that species/permit back, but you will not earn a point for the current year. **Important: If you surrender a big game permit less than 30 days before the season opens, you will lose all of your previously accrued bonus or preference points for that species/permit and you will not earn a point for the current year.**

As long as you surrender a big game permit before the season opens, any applicable waiting period(s) will be waived.

Groups

How permit surrender affects bonus and preference points

If you obtain a permit through a group application—and then you decide to surrender it—you will not have your bonus or preference points reinstated unless your **entire** group meets the following conditions:

- All group members must surrender their permits
- Permit surrenders must occur at least 30 days before the start of the season

Note: Even if you meet the above conditions, you will not earn a point for the current year.

Important: If some of your group members surrender their permits **less than 30 days** from the season opener, **all** group members will lose **all** of their bonus or preference points.

Members of the group may not surrender their permits individually unless the surrender occurs because of:

- Activation in the military
- An injury that will prevent the individual from hunting
- Death

How permit surrender affects waiting periods

If members of a group surrender their permits before the season begins, the waiting period will be waived. General-season permits are not subject to waiting periods.

Dedicated Hunters

If you're enrolled in the Dedicated Hunter program, and you decide to surrender your permit, you must return it to the Division before Aug. 21, 2021 (the day the general-season archery deer hunt opens).

Plan on sharing the mountain

As much as you'd like to have Utah's backcountry to yourself, you share it with campers, hikers, photographers and other hunters. Some of those hunters are after big game—just like you—while others are pursuing black bear, forest grouse and other species.

Everyone shares the landscape, so please be patient and considerate when encountering others on public land.

Private landowner and CWMU permit holders

If you obtain a limited-entry landowner permit or a private CWMU permit, you can surrender it.

Limited-entry private landowner permits must be surrendered before the season the permit was issued for opens.

To surrender a private CWMU permit, there are two options. If possible, you should surrender your CWMU permit before the CWMU season opening dates listed on page 10.

To surrender your permit after the CWMU season has started, but before you hunt, you and the CWMU operator must both sign an affidavit stating that you did not hunt with the permit. Both of the signatures must be notarized.

After the signatures are notarized, submit the affidavit and the unused permit to the Division.

Permit refunds and exchanges

Utah Code § 23-19-38 & Utah Admin. Rule R657-42

The Division rarely issues refunds for permits, licenses or certificates of registration, but there are some exceptions. To see if you're eligible for a refund, visit wildlife.utah.gov/refund.

Reminder: If you are eligible for a refund, you must submit all required forms and accompanying paperwork within 90 days of the season ending in order to qualify for a full refund.

Permit exchanges

You may exchange your general-season deer or elk permit for one that's available in another unit, but it must be for the same species and sex. For example, you cannot exchange a buck deer permit for a bull elk permit. The exchange must occur before the season opening date on the permit you originally obtained.

You must also pay a \$10 handling fee to exchange a permit.

Lifetime license holders: Obtaining your permit in 2021

Utah Admin. Rule R657-17

Lifetime licenses were last sold in Utah in 1994. If you are one of the lucky hunters who has a lifetime license, the Division wants you to obtain your deer permit as quickly and smoothly as possible:

- To select the unit you want to hunt, you'll need to complete the online lifetime license questionnaire. The questionnaire is located in the 2021 big game application. Visit wildlife.utah.gov between Jan. 28 and March 4, 2021 to access the application, complete the questionnaire and select a unit.
- If you do not complete the lifetime license questionnaire by March 4, 2021, you will automatically receive

a permit for the unit you selected in 2020.

- If you did not select a general-season unit in the past three years, and you do not complete your lifetime license questionnaire in 2021, you may obtain a remaining permit at a Division office, starting July 15.
- If your address changes, please notify the Division immediately.
- If you are already enrolled in the Dedicated Hunter program, you are not required to complete your lifetime license questionnaire.
- If you are planning to apply for the Dedicated Hunter program in 2021, you must complete your lifetime license questionnaire.

For more information about lifetime licenses, visit wildlife.utah.gov/lifetime.

Duplicate licenses

Utah Code § 23-19-10 & Utah Admin. Rule R657-5-5

If your unexpired license or permit is destroyed, lost or stolen, you can obtain a duplicate from a Division office or a license agent for \$10 or half of the price of the original license or permit, whichever is less.

If you drew a license or permit, but you never received it, the Division may waive the fee that you would normally have to pay to get a duplicate.

Keep in mind that you can also use the Utah Hunting and Fishing app to legally carry hunting or combination licenses on a phone or tablet for all the members of your family. To download the app, visit wildlife.utah.gov/mobileapp.

DEDICATED HUNTER PROGRAM

Utah Admin. Rule R657-38

Enjoy more hunting opportunities and help Utah wildlife.

Want to spend more time hunting deer in Utah? You should consider applying for the Dedicated Hunter Program.

The Division holds an annual drawing to fill open spots in the three-year program.

If your name is drawn—and you meet the program requirements—you can expect great hunting opportunities and a chance to help Utah wildlife.

Benefits and requirements

As a Dedicated Hunter, you have the opportunity to obtain a deer permit every year for three years. Even better, you can hunt all of the general deer seasons—archery, muzzle-loader and any legal weapon (rifle)—with your Dedicated Hunter permit.

In exchange for this opportunity, you agree to complete the following requirements:

- Participate in all three years of the program
- Pass an online wildlife conservation and ethics course
- Complete a minimum of 32 service hours on Division-approved wildlife conservation projects during the three-year period
- Harvest only two deer during your three-year enrollment period

For additional details about the program, please visit wildlife.utah.gov/dh.

Joining the program

Online applications for the Dedicated Hunter Program will be accepted from Jan. 28–March 4, 2021 (as part of the 2021 big game application process). You may apply as an individual or in groups of up to four hunters.

Results of the drawing will be available no later than May 31, 2021.

To apply for the program, please visit wildlife.utah.gov/dh and click “How to apply” in the menu at the right of the page. The links will walk you through a required orientation course and lead you to the online application.

The orientation is easy, but you must complete it before you will be able to apply for the program. Do not wait until the last minute, or you might not have time to complete the course and submit your application before the deadline.

To apply for the program, the application fee is \$10 for residents and \$15 for nonresidents. If your application is drawn, you will be charged the appropriate program fee. (Dedicated Hunter program fees are listed on page 13.)

Dedicated Hunter preference points

If you apply for the Dedicated Hunter Program in 2021, and you aren't selected to participate, you'll receive a Dedicated Hunter preference point. These preference points give applicants a better chance at getting into the program in future years.

If you don't want to join the program this year—but you'd like a better chance at participating in the future—you can choose to apply for a Dedicated Hunter preference point.

OPPORTUNITIES FOR YOUNG HUNTERS

In 2021, there are many options for youth who want to hunt big game.

Hunting deer for multiple seasons

Twenty percent of Utah's general-season buck deer permits are allocated to youth in the big game drawing. For the purposes of big game hunting, you are a youth if you will be 17 years of age or younger on July 31.

If you are a youth who enjoys hunting big game species, you may have some extra hunting possibilities this fall. It all depends on what type of general-season deer permit you obtain.

Any legal weapon permits

If you obtain a general-season any legal weapon deer permit, you may use archery tackle to archery hunt the unit listed on your permit from Aug. 21–Sept. 17, 2021.

If you haven't harvested a deer by the time the archery season ends, you may hunt the same unit during the general muzzleloader and general any legal weapon deer seasons—including the early-season hunt, if it's offered on your unit—using the appropriate equipment. (See the box to the right for details.)

You also have the option of using archery tackle to hunt in the extended archery areas as soon as they are open to hunting. Just be sure to complete the archery ethics course available at wildlife.utah.gov/extendedarchery.

Muzzleloader permits

If you obtain a general-season muzzleloader deer permit, you may hunt **only** during the general muzzleloader season, which runs from Sept. 29–Oct. 7, 2021. You must use muzzleloader equipment and hunt the unit listed on your permit. You may not hunt during the general archery or any legal weapon seasons.

Archery permits

If you obtain a general-season archery deer permit, you may hunt **only** during the general

archery deer season and the extended archery deer season.

During the general season, you may hunt in the unit printed on your permit.

During the extended season, you may hunt in the extended archery areas after completing the archery ethics course available at wildlife.utah.gov/extendedarchery.

Can I hunt during the early season?

If you're a youth with an any legal weapon permit, you may only hunt the early season if it's offered on your unit. The following hunting units are the **only** units with early-season any legal weapon buck deer hunts:

- Chalk Creek/East Canyon/Morgan-South Rich
- Fillmore
- Kamas
- Nine Mile
- North Slope (new)
- Panguitch Lake
- Pine Valley
- Plateau, Fishlake
- Zion

If you're a youth who has drawn an any legal weapon buck deer permit for one of the above units—and you do not harvest a buck during the archery or muzzleloader seasons—you may hunt the unit listed on your permit during the early season (Oct. 13–17, 2021).

If your permit is not for one of the units listed above, you must wait to hunt the unit listed on your permit until the general any legal weapon buck deer season, which runs from Oct. 23–31, 2021.

You may not hunt during the general muzzleloader or general any legal weapon seasons.

If you don't draw an archery permit in the big game drawing, you may be able to purchase one.

Additional youth archery permits will be available on July 15, 2021. The Utah Wildlife Board has approved additional permits specifically for young archers.

Reminder: Youth who purchase these additional youth archery deer permits will not lose any preference points they've accrued for general-season buck deer.

General-season elk permits

New this year: In 2021, there will be an unlimited number of general-season any bull elk permits (any legal weapon, muzzleloader or multi-season) available for youth who will be 17 years of age or younger on July 31, 2021.

These permits are not for the youth any bull elk hunt that runs from Sept. 18–26, 2021.

Visit wildlife.utah.gov/biggame in early June to see purchase times and locations.

Youth-only groups

If you will be 17 years of age or younger on July 31, 2021, you can also participate in the youth drawing for general-season deer permits or youth any bull elk permits. You can submit an application as an individual hunter or as a member of a youth-only group.

Youth deer permits

Up to four young hunters can apply to hunt together in a youth-only group. This allows youth to hunt buck deer in the same unit with siblings, friends and cousins.

When you apply in a youth-only group for the general-season deer hunt, all hunters must meet the age requirement or the application will not be processed with the other youth applications.

Hunter Mentoring program

The Utah Hunter Mentoring program allows any qualifying adult to share their hunting permits with resident youth.

Permits that are eligible for sharing under the Hunter Mentoring program include all big game permits as well as black bear, cougar, turkey, greater sage-grouse and sharp-tailed grouse permits. Only swan and sandhill crane permits may not be shared because they are subject to conflicting federal regulations.

To learn more about program eligibility and requirements and to download the application form, visit wildlife.utah.gov/mentoring.

If you're successful in drawing permits, please remember that all hunters under the age of 16 must be accompanied in the field by a parent, legal guardian or responsible person 21 years of age or older. For details on this requirement, see page 14.

For more information on applying as a youth-only group, please visit wildlife.utah.gov/huntingpermits.

Youth any bull elk permits

Youth who want to participate in the youth any bull elk hunt must **apply for permits** in the big game hunt drawing. If you draw a permit, you may harvest either a bull elk or an antlerless elk from Sept. 18–26, 2021. (**Important:** A permit for the youth any bull elk hunt is **not** valid during the general-season any bull elk hunts.)

Reminder: Up to **four** youths may apply together for youth any bull elk permits, but all individuals must be 17 years of age or younger on July 31, 2021.

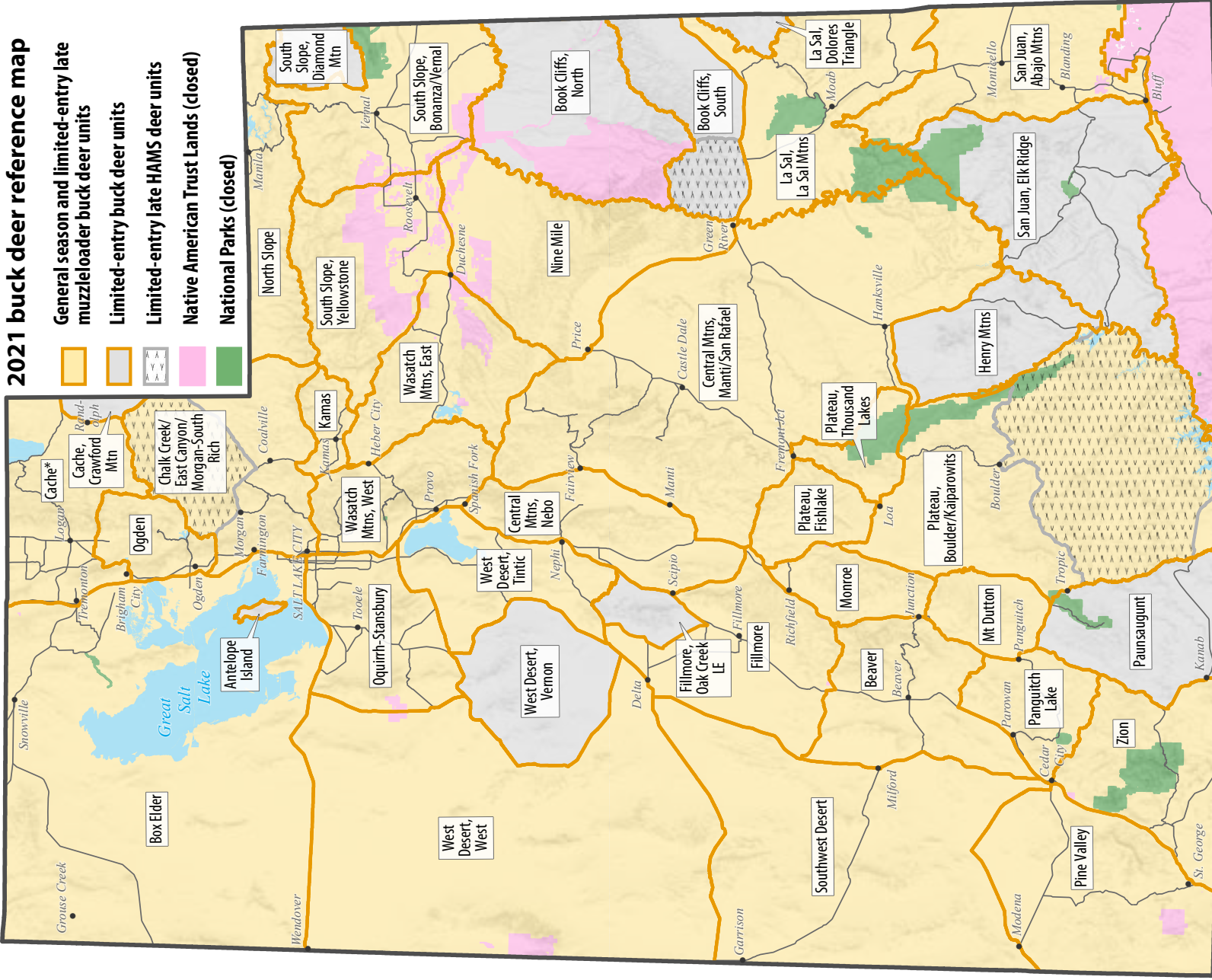
General season and limited-entry late muzzleloader buck deer units

Limited-entry buck deer units

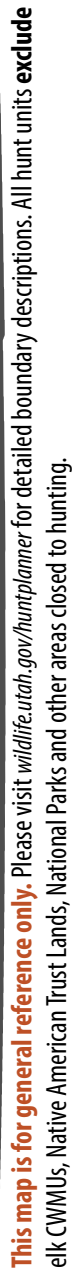
Limited-entry late HAMS deer units

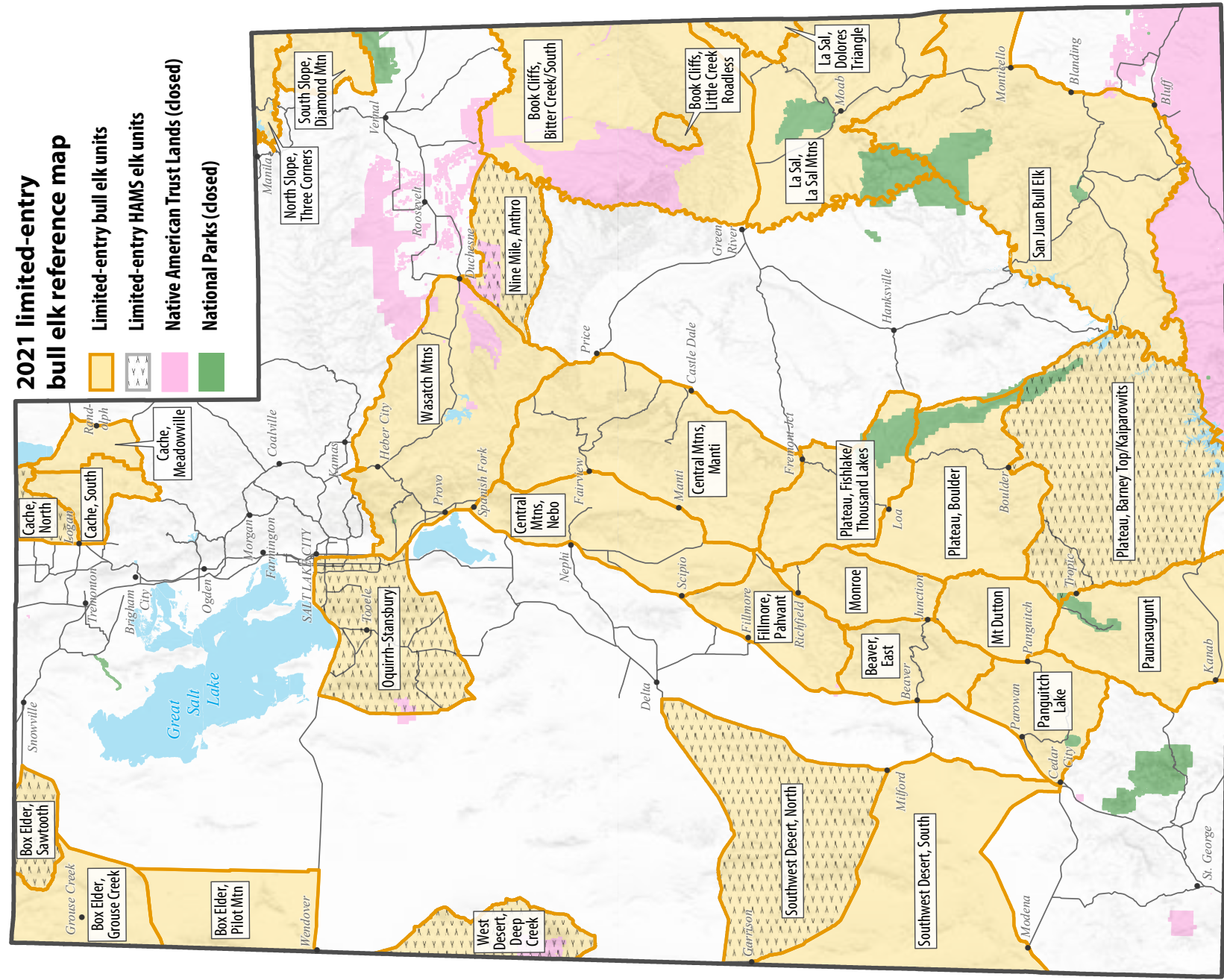
Native American Trust Lands (closed)

National Parks (closed)



This map is for general reference only. Please visit wildlife.utah.gov/huntplanner for detailed boundary descriptions. All hunt units **exclude** deer CWMUs, Native American Trust Lands, National Parks and other areas closed to hunting.





This map is for general reference only. Please visit wildlife.utah.gov/huntplanner for detailed boundary descriptions. All hunt units **exclude** elk CWMUs, Native American Trust Lands, National Parks and other areas closed to hunting.

HUNT TABLES

The Division does not guarantee access to any private or public land. Hunt unit boundaries may include private property or other excluded areas. Hunters must research land accessibility before hunting.

General-season buck deer

Permit fee: Resident \$40, Nonresident \$398

Use the hunt number to apply. Deer preference point code: **GDR**

Archery hunts

Hunt name	Hunt #	Season dates
Beaver	DB1500	Aug. 21–Sept. 17
Box Elder	DB1501	Aug. 21–Sept. 17
Cache (includes Cache, Crawford Mtn unit)	DB1502	Aug. 21–Sept. 17
Central Mtns, Manti/San Rafael	DB1503	Aug. 21–Sept. 17
Central Mtns, Nebo	DB1504	Aug. 21–Sept. 17
Chalk Creek/East Canyon/Morgan-South Rich	DB1505	Aug. 21–Sept. 17
Fillmore	DB1506	Aug. 21–Sept. 17
Kamas	DB1508	Aug. 21–Sept. 17
La Sal, La Sal Mtns	DB1509	Aug. 21–Sept. 17
Monroe	DB1510	Aug. 21–Sept. 17
Mt Dutton	DB1511	Aug. 21–Sept. 17
Nine Mile	DB1512	Aug. 21–Sept. 17
North Slope	DB1513	Aug. 21–Sept. 17
Ogden	DB1514	Aug. 21–Sept. 17
Oquirrh-Stansbury	DB1515	Aug. 21–Sept. 17
Panguitch Lake	DB1516	Aug. 21–Sept. 17
Pine Valley	DB1517	Aug. 21–Sept. 17
Plateau, Boulder/Kaiparowits	DB1518	Aug. 21–Sept. 17
Plateau, Fishlake	DB1519	Aug. 21–Sept. 17
Plateau, Thousand Lakes	DB1520	Aug. 21–Sept. 17
San Juan, Abajo Mtns	DB1521	Aug. 21–Sept. 17
South Slope, Bonanza/Vernal	DB1522	Aug. 21–Sept. 17
South Slope, Yellowstone	DB1523	Aug. 21–Sept. 17
Southwest Desert	DB1524	Aug. 21–Sept. 17
Wasatch Mtns, East	DB1525	Aug. 21–Sept. 17

HUNT TABLES

The Division does not guarantee access to any private or public land. Hunt unit boundaries may include private property or other excluded areas. Hunters must research land accessibility before hunting.

General-season buck deer (continued)

Archery hunts

Hunt name	Hunt #	Season dates
Wasatch Mtns, West	DB1526	Aug. 21–Sept. 17
West Desert, Tintic	DB1527	Aug. 21–Sept. 17
West Desert, West	DB1528	Aug. 21–Sept. 17
Zion	DB1529	Aug. 21–Sept. 17

Any legal weapon — early hunts

Hunt name	Hunt #	Season dates
Chalk Creek/East Canyon/Morgan-South Rich	DB1590	Oct. 13–Oct. 17
Fillmore	DB1591	Oct. 13–Oct. 17
Kamas	DB1592	Oct. 13–Oct. 17
Nine Mile	DB1593	Oct. 13–Oct. 17
North Slope (new hunt)	DB1598	Oct. 13–Oct. 17
Panguitch Lake	DB1594	Oct. 13–Oct. 17
Pine Valley	DB1595	Oct. 13–Oct. 17
Plateau, Fishlake	DB1596	Oct. 13–Oct. 17
Zion	DB1597	Oct. 13–Oct. 17

Any legal weapon (rifle) hunts

Hunt name	Hunt #	Season dates
Beaver	DB1530	Oct. 23–Oct. 31
Box Elder	DB1531	Oct. 23–Oct. 31
Cache (includes Cache, Crawford Mtn unit)	DB1532	Oct. 23–Oct. 31
Central Mtns, Manti/San Rafael	DB1533	Oct. 23–Oct. 31
Central Mtns, Nebo	DB1534	Oct. 23–Oct. 31
Chalk Creek/East Canyon/Morgan-South Rich	DB1535	Oct. 23–Oct. 31
Fillmore	DB1536	Oct. 23–Oct. 31
Kamas	DB1538	Oct. 23–Oct. 31
La Sal, La Sal Mtns	DB1539	Oct. 23–Oct. 31

HUNT TABLES

The Division does not guarantee access to any private or public land. Hunt unit boundaries may include private property or other excluded areas. Hunters must research land accessibility before hunting.

General-season buck deer (continued)

Any legal weapon (rifle) hunts

Hunt name	Hunt #	Season dates
Monroe	DB1540	Oct. 23–Oct. 31
Mt Dutton	DB1541	Oct. 23–Oct. 31
Nine Mile	DB1542	Oct. 23–Oct. 31
North Slope	DB1543	Oct. 23–Oct. 31
Ogden	DB1544	Oct. 23–Oct. 31
Oquirrh-Stansbury	DB1545	Oct. 23–Oct. 31
Panguitch Lake	DB1546	Oct. 23–Oct. 31
Pine Valley	DB1547	Oct. 23–Oct. 31
Plateau, Boulder/Kaiparowits	DB1548	Oct. 23–Oct. 31
Plateau, Fishlake	DB1549	Oct. 23–Oct. 31
Plateau, Thousand Lakes	DB1550	Oct. 23–Oct. 31
San Juan, Abajo Mtns	DB1551	Oct. 23–Oct. 31
South Slope, Bonanza/Vernal	DB1552	Oct. 23–Oct. 31
South Slope, Yellowstone	DB1553	Oct. 23–Oct. 31
Southwest Desert	DB1554	Oct. 23–Oct. 31
Wasatch Mtns, East	DB1555	Oct. 23–Oct. 31
Wasatch Mtns, West	DB1556	Oct. 23–Oct. 31
West Desert, Tintic	DB1557	Oct. 23–Oct. 31
West Desert, West	DB1558	Oct. 23–Oct. 31
Zion	DB1559	Oct. 23–Oct. 31

Muzzleloader hunts

Hunt name	Hunt #	Season dates
Beaver	DB1560	Sept. 29–Oct. 7
Box Elder	DB1561	Sept. 29–Oct. 7
Cache (includes Cache, Crawford Mtn unit)	DB1562	Sept. 29–Oct. 7
Central Mtns, Manti/San Rafael	DB1563	Sept. 29–Oct. 7

HUNT TABLES

The Division does not guarantee access to any private or public land. Hunt unit boundaries may include private property or other excluded areas. Hunters must research land accessibility before hunting.

General-season buck deer (continued)

Muzzleloader hunts

Hunt name	Hunt #	Season dates
Central Mtns, Nebo	DB1564	Sept. 29–Oct. 7
Chalk Creek/East Canyon/Morgan-South Rich	DB1565	Sept. 29–Oct. 7
Fillmore	DB1566	Sept. 29–Oct. 7
Kamas	DB1568	Sept. 29–Oct. 7
La Sal, La Sal Mtns	DB1569	Sept. 29–Oct. 7
Monroe	DB1570	Sept. 29–Oct. 7
Mt Dutton	DB1571	Sept. 29–Oct. 7
Nine Mile	DB1572	Sept. 29–Oct. 7
North Slope	DB1573	Sept. 29–Oct. 7
Ogden	DB1574	Sept. 29–Oct. 7
Oquirrh-Stansbury	DB1575	Sept. 29–Oct. 7
Panguitch Lake	DB1576	Sept. 29–Oct. 7
Pine Valley	DB1577	Sept. 29–Oct. 7
Plateau, Boulder/Kaiparowits	DB1578	Sept. 29–Oct. 7
Plateau, Fishlake	DB1579	Sept. 29–Oct. 7
Plateau, Thousand Lakes	DB1580	Sept. 29–Oct. 7
San Juan, Abajo Mtns	DB1581	Sept. 29–Oct. 7
South Slope, Bonanza/Vernal	DB1582	Sept. 29–Oct. 7
South Slope, Yellowstone	DB1583	Sept. 29–Oct. 7
Southwest Desert	DB1584	Sept. 29–Oct. 7
Wasatch Mtns, East	DB1585	Sept. 29–Oct. 7
Wasatch Mtns, West	DB1586	Sept. 29–Oct. 7
West Desert, Tintic	DB1587	Sept. 29–Oct. 7
West Desert, West	DB1588	Sept. 29–Oct. 7
Zion	DB1589	Sept. 29–Oct. 7

HUNT TABLES

The Division does not guarantee access to any private or public land. Hunt unit boundaries may include private property or other excluded areas. Hunters must research land accessibility before hunting.

Dedicated Hunter buck deer

Permit fees: Resident Adult \$195, Resident Youth \$120,
Nonresident Adult \$1,047, Nonresident Youth \$814
Use the hunt number to apply. Dedicated Hunter point code: **DHL**

Hunt name	Hunt #
Beaver	DB1769
Box Elder	DB1770
Cache (includes Cache, Crawford Mtn unit)	DB1771
Central Mtns, Manti/San Rafael	DB1772
Central Mtns, Nebo	DB1773
Chalk Creek/East Canyon/Morgan-South Rich	DB1774
Fillmore	DB1775
Kamas	DB1777
La Sal, La Sal Mtns	DB1778
Monroe	DB1779
Mt Dutton	DB1780
Nine Mile	DB1781
North Slope	DB1782
Ogden	DB1783
Oquirrh-Stansbury	DB1784
Panguitch Lake	DB1785
Pine Valley	DB1786
Plateau, Boulder/Kaiparowits	DB1787
Plateau, Fishlake	DB1788
Plateau, Thousand Lakes	DB1789
San Juan, Abajo Mtns	DB1790
South Slope, Bonanza/Vernal	DB1791
South Slope, Yellowstone	DB1792
Southwest Desert	DB1793
Wasatch Mtns, East	DB1794
Wasatch Mtns, West	DB1795

HUNT TABLES

The Division does not guarantee access to any private or public land. Hunt unit boundaries may include private property or other excluded areas. Hunters must research land accessibility before hunting.

Dedicated Hunter buck deer (continued)

Hunt name	Hunt #
West Desert, Tintic	DB1796
West Desert, West	DB1797
Zion	DB1798

Premium limited-entry buck deer

Permit fee: Resident \$168, Nonresident \$768
Use the hunt number to apply. Deer bonus point code: **DEE**

Archery hunts

Hunt name	Hunt #	Season dates
Henry Mtns	DB1000	Aug. 21–Sept. 17
Paunsaugunt*	DB1001	Aug. 21–Sept. 17

Any legal weapon (rifle) hunts

Hunt name	Hunt #	Season dates
Antelope Island	DB1002	Nov. 8–Nov. 18
Henry Mtns	DB1003	Oct. 23–Oct. 31
Paunsaugunt	DB1004	Oct. 23–Oct. 31

Muzzleloader hunts

Hunt name	Hunt #	Season dates
Henry Mtns	DB1005	Sept. 29–Oct. 7
Paunsaugunt*	DB1006	Sept. 29–Oct. 7

* A management buck hunt will occur during a portion of this premium limited-entry hunt. See page 44 for a list of all management buck deer hunts and season dates.

BLACK TEXT: At least one nonresident permit • BLUE TEXT: Resident permits only

HUNT TABLES

The Division does not guarantee access to any private or public land. Hunt unit boundaries may include private property or other excluded areas. Hunters must research land accessibility before hunting.

Premium limited-entry buck deer (continued)

Multi-season hunts

Permit fee: Resident \$305, Nonresident \$1,330

Use the hunt number to apply. Deer bonus point code: **DEE**

Hunt name	Hunt #	Season dates
Henry Mtns	DB1007	All Limited Entry Seasons
Paunsaugunt*	DB1008	All Limited Entry Seasons

Management and cactus buck deer

Permit fee: Resident \$80, Nonresident \$650

Use the hunt number to apply. Use bonus point code: **DEE**

Management buck hunts

Hunt name	Hunt #	Season dates
Paunsaugunt (archery)	DB1073	Aug. 28–Sept. 17
Paunsaugunt (muzzleloader)	DB1074	Oct. 2–Oct. 7
Paunsaugunt (any legal weapon)	DB1010	Nov. 1–Nov. 5

Cactus buck hunt

Hunt name	Hunt #	Season dates
Paunsaugunt	DB1058	Nov. 6–Nov. 21

Limited-entry buck deer

Permit fee: Resident \$80, Nonresident \$650

Use the hunt number to apply. Use bonus point code: **DEE**

Archery hunts

Hunt name	Hunt #	Season dates
Book Cliffs	DB1011	Aug. 21–Sept. 17
Fillmore, Oak Creek LE	DB1012	Aug. 21–Sept. 17
La Sal, Dolores Triangle	DB1013	Nov. 6–Nov. 19
San Juan, Elk Ridge	DB1014	Aug. 21–Sept. 17

* A management buck hunt will occur during a portion of this premium limited-entry hunt. See the list of all management buck deer hunts and season dates in the table on this page.

BLACK TEXT: At least one nonresident permit • BLUE TEXT: Resident permits only

HUNT TABLES

The Division does not guarantee access to any private or public land. Hunt unit boundaries may include private property or other excluded areas. Hunters must research land accessibility before hunting.

Limited-entry buck deer (continued)

Archery hunts

Hunt name	Hunt #	Season dates
South Slope, Diamond Mtn	DB1015	Aug. 21–Sept. 17
West Desert, Vernon	DB1016	Aug. 21–Sept. 17

Any legal weapon (rifle) hunts

Hunt name	Hunt #	Season dates
Book Cliffs, North	DB1017	Oct. 23–Oct. 31
Book Cliffs, South	DB1018	Oct. 23–Oct. 31
Fillmore, Oak Creek LE	DB1019	Oct. 23–Oct. 31
La Sal, Dolores Triangle	DB1020	Nov. 20–Nov. 28
San Juan, Elk Ridge	DB1022	Oct. 23–Oct. 31
South Slope, Diamond Mtn	DB1023	Oct. 23–Oct. 31
West Desert, Vernon	DB1024	Oct. 23–Oct. 31

Muzzleloader hunts

Hunt name	Hunt #	Season dates
Book Cliffs	DB1025	Sept. 29–Oct. 7
Cache, Crawford Mtn	DB1026	Nov. 13–Nov. 28
Fillmore, Oak Creek LE	DB1029	Sept. 29–Oct. 7
La Sal, Dolores Triangle	DB1031	Dec. 1–Dec. 9
San Juan, Elk Ridge	DB1037	Sept. 29–Oct. 7
South Slope, Diamond Mtn	DB1038	Sept. 29–Oct. 7
West Desert, Vernon	DB1042	Sept. 29–Oct. 7

BLACK TEXT: At least one nonresident permit • BLUE TEXT: Resident permits only

HUNT TABLES

The Division does not guarantee access to any private or public land. Hunt unit boundaries may include private property or other excluded areas. Hunters must research land accessibility before hunting.

Limited-entry buck deer (continued)

Muzzleloader hunts on general-season units

Hunt name	Hunt #	Season dates
Beaver	DB1059	Nov. 3–Nov. 11
Box Elder	DB1077	Nov. 3–Nov. 11
Cache (includes Cache, Crawford Mtn unit)	DB1078	Nov. 3–Nov. 11
Central Mtns, Manti/San Rafael	DB1079	Nov. 3–Nov. 11
Central Mtns, Nebo	DB1080	Nov. 3–Nov. 11
Chalk Creek/East Canyon/Morgan-South Rich	DB1027	Nov. 3–Nov. 11
Fillmore	DB1028	Nov. 3–Nov. 11
Kamas	DB1030	Nov. 3–Nov. 11
La Sal, La Sal Mtns	DB1081	Nov. 3–Nov. 11
Monroe	DB1032	Nov. 3–Nov. 11
Mt Dutton	DB1053	Nov. 3–Nov. 11
Nine Mile	DB1033	Nov. 3–Nov. 11
North Slope	DB1065	Nov. 3–Nov. 11
Ogden	DB1054	Nov. 3–Nov. 11
Oquirrh-Stansbury	DB1082	Nov. 3–Nov. 11
Panguitch Lake	DB1083	Nov. 3–Nov. 11
Pine Valley	DB1034	Nov. 3–Nov. 11
Plateau, Boulder/Kaiparowits	DB1084	Nov. 3–Nov. 11
Plateau, Fishlake	DB1055	Nov. 3–Nov. 11
Plateau, Thousand Lakes	DB1036	Nov. 3–Nov. 11
San Juan, Abajo Mtns	DB1085	Nov. 3–Nov. 11
South Slope, Bonanza/Vernal	DB1086	Nov. 3–Nov. 11
South Slope, Yellowstone	DB1039	Nov. 3–Nov. 11
Southwest Desert	DB1040	Nov. 3–Nov. 11
Wasatch Mtns, East	DB1041	Nov. 3–Nov. 11
Wasatch Mtns, West	DB1087	Nov. 3–Nov. 11
West Desert, Tintic	DB1088	Nov. 3–Nov. 11

HUNT TABLES

The Division does not guarantee access to any private or public land. Hunt unit boundaries may include private property or other excluded areas. Hunters must research land accessibility before hunting.

Limited-entry buck deer (continued)

Muzzleloader hunts on general-season units

Hunt name	Hunt #	Season dates
West Desert, West	DB1089	Nov. 3–Nov. 11
Zion	DB1043	Nov. 3–Nov. 11

Handgun-archery-muzzleloader-shotgun (HAMS) limited-entry buck deer hunts

Hunt name	Hunt #	Season dates
Book Cliffs, Floy Canyon	DB1090	Nov. 13–Nov. 28
Kaiparowits HAMS	DB1091	Nov. 13–Nov. 28
Morgan-South Rich	DB1092	Nov. 13–Nov. 28

Multi-season hunts

Permit fee: Resident \$145, Nonresident \$1,100

Use the hunt number to apply. Deer bonus point code: **DEE**

Hunt name	Hunt #	Season dates
Book Cliffs	DB1044	All Limited Entry Seasons
Fillmore, Oak Creek LE	DB1045	All Limited Entry Seasons
San Juan, Elk Ridge	DB1046	All Limited Entry Seasons
South Slope, Diamond Mtn	DB1047	All Limited Entry Seasons
West Desert, Vernon	DB1048	All Limited Entry Seasons

Youth any bull elk hunts

Permit fee: Resident \$50, Nonresident \$593

Hunt name	Hunt #	Season dates
Youth General Any Bull Elk*	EB1007	Sept. 18–Sept. 26

* This hunt overlaps the last part of the general-season archery any bull elk hunt, which runs until Sept. 22, 2021.

BLACK TEXT: At least one nonresident permit • BLUE TEXT: Resident permits only

HUNT TABLES

The Division does not guarantee access to any private or public land. Hunt unit boundaries may include private property or other excluded areas. Hunters must research land accessibility before hunting.

Limited-entry bull elk

Permit fee: Resident \$285, Nonresident \$1000

Use the hunt number to apply. Elk bonus point code: **ELK**

Archery hunts

Hunt name	Hunt #	Season dates
Beaver, East	EB3000	Aug. 21–Sept. 17
Book Cliffs, Bitter Creek/South	EB3001	Aug. 21–Sept. 17
Book Cliffs, Little Creek Roadless	EB3002	Aug. 21–Sept. 17
Box Elder, Pilot Mtn (new hunt)	EB3130	Aug. 21–Sept. 10
Cache, Meadowville†	EB3003	Aug. 21–Sept. 17
Cache, South	EB3005	Aug. 21–Sept. 17
Central Mtns, Manti	EB3006	Aug. 21–Sept. 17
Central Mtns, Nebo	EB3007	Aug. 21–Sept. 17
Fillmore, Pahvant	EB3008	Aug. 21–Sept. 17
La Sal, La Sal Mtns	EB3009	Aug. 21–Sept. 17
Monroe	EB3010	Aug. 21–Sept. 17
Mt Dutton	EB3011	Aug. 21–Sept. 17
North Slope, Three Corners	EB3013	Aug. 21–Sept. 17
Panguitch Lake	EB3015	Aug. 21–Sept. 17
Paunsaugunt	EB3016	Aug. 21–Sept. 17
Plateau, Boulder (boundary change)	EB3145	Aug. 21–Sept. 17
Plateau, Fishlake/Thousand Lakes	EB3018	Aug. 21–Sept. 17
San Juan Bull Elk	EB3019	Aug. 21–Sept. 17
South Slope, Diamond Mtn	EB3020	Aug. 21–Sept. 17
Southwest Desert, South (boundary change)	EB3146	Aug. 21–Sept. 17
Wasatch Mtns	EB3022	Aug. 21–Sept. 17

September archery hunts

Hunt name	Hunt #	Season dates
Box Elder, Sawtooth (new hunt)	EB3131	Sept. 1–Sept. 30

†This unit is composed of all or largely private property. Hunters should acquire written permission from the landowner before applying for this hunt.

BLACK TEXT: At least one nonresident permit • BLUE TEXT: Resident permits only

HUNT TABLES

The Division does not guarantee access to any private or public land. Hunt unit boundaries may include private property or other excluded areas. Hunters must research land accessibility before hunting.

September archery hunts

Hunt name	Hunt #	Season dates
Cache, North (new hunt)	EB3132	Sept. 1–Sept. 30
Nine Mile, Anthro (new hunt)	EB3133	Sept. 1–Sept. 30
Oquirrh-Stansbury (new hunt)	EB3134	Sept. 1–Sept. 30
Plateau, Barney Top/Kaiparowits (new hunt)	EB3135	Sept. 1–Sept. 30
Southwest Desert, North (new hunt)	EB3136	Sept. 1–Sept. 30
West Desert, Deep Creek (new hunt)	EB3137	Sept. 1–Sept. 30

Limited-entry bull elk (continued)

Any legal weapon (rifle) — early hunts

Hunt name	Hunt #	Season dates
Beaver, East	EB3024	Sept. 18–Sept. 26
Book Cliffs, Bitter Creek/South	EB3026	Sept. 18–Sept. 26
Book Cliffs, Little Creek Roadless	EB3028	Sept. 18–Sept. 26
Box Elder, Grouse Creek (boundary change)	EB3147	Sept. 18–Sept. 26
Box Elder, Pilot Mtn	EB3031	Sept. 11–Oct. 2
Cache, Meadowville†	EB3032	Sept. 18–Sept. 26
Cache, South	EB3036	Sept. 18–Sept. 26
Central Mtns, Manti	EB3038	Sept. 18–Sept. 26
Central Mtns, Nebo	EB3040	Sept. 18–Sept. 26
Fillmore, Pahvant	EB3042	Sept. 18–Sept. 26
La Sal, La Sal Mtns	EB3045	Sept. 18–Sept. 26
Monroe	EB3047	Sept. 18–Sept. 26
Mt Dutton	EB3049	Sept. 18–Sept. 26
Panguitch Lake	EB3056	Sept. 18–Sept. 26
Paunsaugunt	EB3058	Sept. 18–Sept. 26
Plateau, Boulder (boundary change)	EB3148	Sept. 18–Sept. 26
Plateau, Fishlake/Thousand Lakes	EB3063	Sept. 18–Sept. 26
San Juan Bull Elk	EB3066	Sept. 18–Sept. 26

†This unit is composed of all or largely private property. Hunters should acquire written permission from the landowner before applying for this hunt.

HUNT TABLES

The Division does not guarantee access to any private or public land. Hunt unit boundaries may include private property or other excluded areas. Hunters must research land accessibility before hunting.

Limited-entry bull elk (continued)

Any legal weapon (rifle) — early hunts

Hunt name	Hunt #	Season dates
South Slope, Diamond Mtn	EB3068	Sept. 18–Sept. 26
Southwest Desert, South (boundary change)	EB3149	Sept. 18–Sept. 26
Wasatch Mtns	EB3072	Sept. 18–Sept. 26

Any legal weapon (rifle) — midseason hunts

Hunt name	Hunt #	Season dates
Box Elder, Grouse Creek (boundary change)	EB3150	Oct. 9–Oct. 21
Central Mtns, Manti	EB3126	Oct. 9–Oct. 21
North Slope, Three Corners	EB3053	Oct. 9–Oct. 21
Paunsaugunt	EB3059	Oct. 9–Oct. 21
Plateau, Fishlake/Thousand Lakes	EB3064	Oct. 9–Oct. 21
South Slope, Diamond Mtn	EB3069	Oct. 9–Oct. 21
Wasatch Mtns	EB3127	Oct. 9–Oct. 21

Any legal weapon (rifle) — late hunts

Hunt name	Hunt #	Season dates
Beaver, East	EB3025	Nov. 13–Nov. 21
Book Cliffs, Bitter Creek/South	EB3027	Nov. 13–Nov. 21
Cache, Meadowville†	EB3033	Nov. 13–Nov. 21
Cache, South	EB3037	Nov. 13–Nov. 21
Central Mtns, Manti	EB3039	Nov. 13–Nov. 21
Central Mtns, Nebo	EB3041	Nov. 13–Nov. 21
Fillmore, Pahvant	EB3043	Nov. 13–Nov. 21
La Sal, Dolores Triangle	EB3044	Dec. 11, 2021–Jan. 31, 2022
La Sal, La Sal Mtns	EB3046	Nov. 13–Nov. 21

†This unit is composed of all or largely private property. Hunters should acquire written permission from the landowner before applying for this hunt.

BLACK TEXT: At least one nonresident permit • BLUE TEXT: Resident permits only

HUNT TABLES

The Division does not guarantee access to any private or public land. Hunt unit boundaries may include private property or other excluded areas. Hunters must research land accessibility before hunting.

Limited-entry bull elk (continued)

Any legal weapon (rifle) — late hunts

Hunt name	Hunt #	Season dates
Monroe	EB3048	Nov. 13–Nov. 21
Mt Dutton	EB3050	Nov. 13–Nov. 21
Panguitch Lake	EB3057	Nov. 13–Nov. 21
Paunsaugunt	EB3060	Nov. 13–Nov. 21
Plateau, Boulder (boundary change)	EB3151	Nov. 13–Nov. 21
Plateau, Fishlake/Thousand Lakes	EB3065	Nov. 13–Nov. 21
San Juan Bull Elk	EB3067	Nov. 13–Nov. 21
Southwest Desert, South (boundary change)	EB3152	Nov. 13–Nov. 21
Wasatch Mtns	EB3073	Nov. 13–Nov. 21

Muzzleloader hunts

Hunt name	Hunt #	Season dates
Beaver, East	EB3077	Sept. 27–Oct. 8
Book Cliffs, Bitter Creek/South	EB3078	Sept. 27–Oct. 8
Book Cliffs, Little Creek Roadless	EB3079	Sept. 27–Oct. 8
Box Elder, Grouse Creek (boundary change)	EB3153	Sept. 27–Oct. 8
Cache, Meadowville†	EB3081	Sept. 27–Oct. 8
Cache, South	EB3083	Sept. 27–Oct. 8
Central Mtns, Manti	EB3084	Sept. 27–Oct. 8
Central Mtns, Nebo	EB3085	Sept. 27–Oct. 8
Fillmore, Pahvant	EB3086	Sept. 27–Oct. 8
La Sal, La Sal Mtns	EB3087	Sept. 27–Oct. 8
Monroe	EB3088	Sept. 27–Oct. 8
Mt Dutton	EB3089	Sept. 27–Oct. 8
North Slope, Three Corners	EB3091	Nov. 3–Nov. 11
Panguitch Lake	EB3093	Sept. 27–Oct. 8

†This unit is composed of all or largely private property. Hunters should acquire written permission from the landowner before applying for this hunt.

BLACK TEXT: At least one nonresident permit • BLUE TEXT: Resident permits only

HUNT TABLES

The Division does not guarantee access to any private or public land. Hunt unit boundaries may include private property or other excluded areas. Hunters must research land accessibility before hunting.

Limited-entry bull elk (continued)

Muzzleloader hunts

Hunt name	Hunt #	Season dates
Paunsaugunt	EB3094	Sept. 27–Oct. 8
Plateau, Boulder (boundary change)	EB3154	Sept. 27–Oct. 8
Plateau, Fishlake/Thousand Lakes	EB3096	Sept. 27–Oct. 8
San Juan Bull Elk	EB3097	Sept. 27–Oct. 8
South Slope, Diamond Mtn	EB3098	Sept. 27–Oct. 8
Southwest Desert, South (boundary change)	EB3155	Sept. 27–Oct. 8
Wasatch Mtns	EB3100	Sept. 27–Oct. 8

HAMS hunts

Hunt name	Hunt #	Season dates
Box Elder, Sawtooth (new hunt)	EB3138	Oct. 1–Nov. 15
Cache, North (new hunt)	EB3139	Oct. 1–Nov. 15
Nine Mile, Anthro (new hunt)	EB3140	Oct. 1–Nov. 15
Oquirrh-Stansbury (new hunt)	EB3141	Oct. 1–Nov. 15
Plateau, Barney Top/Kaiparowits (new hunt)	EB3142	Oct. 1–Nov. 15
Southwest Desert, North (new hunt)	EB3143	Oct. 1–Nov. 15
West Desert, Deep Creek (new hunt)	EB3144	Oct. 1–Nov. 15

Multi-season hunts

Permit fee: Resident \$513, Nonresident \$1,805

Hunt name	Hunt #	Season dates
Beaver, East	EB3102	All Limited Entry Seasons
Book Cliffs, Bitter Creek/South	EB3103	All Limited Entry Seasons
Book Cliffs, Little Creek Roadless	EB3104	All Limited Entry Seasons
Cache, Meadowville†	EB3105	All Limited Entry Seasons
Cache, South	EB3107	All Limited Entry Seasons

†This unit is composed of all or largely private property. Hunters should acquire written permission from the landowner before applying for this hunt.

BLACK TEXT: At least one nonresident permit • BLUE TEXT: Resident permits only

HUNT TABLES

The Division does not guarantee access to any private or public land. Hunt unit boundaries may include private property or other excluded areas. Hunters must research land accessibility before hunting.

Limited-entry bull elk (continued)

Multi-season hunts

Permit fee: Resident \$513, Nonresident \$1,805

Hunt name	Hunt #	Season dates
Central Mtns, Manti	EB3108	All Limited Entry Seasons
Central Mtns, Nebo	EB3109	All Limited Entry Seasons
Fillmore, Pahvant	EB3110	All Limited Entry Seasons
La Sal, La Sal Mtns	EB3111	All Limited Entry Seasons
Monroe	EB3112	All Limited Entry Seasons
Mt Dutton	EB3113	All Limited Entry Seasons
North Slope, Three Corners	EB3115	All Limited Entry Seasons
Panguitch Lake	EB3117	All Limited Entry Seasons
Paunsaugunt	EB3118	All Limited Entry Seasons
Plateau, Boulder (boundary change)	EB3156	All Limited Entry Seasons
Plateau, Fishlake/Thousand Lakes	EB3120	All Limited Entry Seasons
San Juan Bull Elk	EB3121	All Limited Entry Seasons
South Slope, Diamond Mtn	EB3122	All Limited Entry Seasons
Southwest Desert, South (boundary change)	EB3157	All Limited Entry Seasons
Wasatch Mtns	EB3124	All Limited Entry Seasons

Limited-entry pronghorn

Permit fee: Resident \$55, Nonresident \$337

Use the hunt number to apply. Pronghorn bonus point code: **PRO**

Archery hunts

Hunt name	Hunt #	Season dates
Beaver	PB5000	Aug. 21–Sept. 17
Book Cliffs, Bitter Creek	PB5001	Aug. 21–Sept. 17
Book Cliffs, South	PB5002	Aug. 21–Sept. 17
Box Elder, Promontory	PB5003	Aug. 21–Sept. 17
Box Elder, Puddle Valley	PB5004	Aug. 21–Sept. 17

BLACK TEXT: At least one nonresident permit • BLUE TEXT: Resident permits only

HUNT TABLES

The Division does not guarantee access to any private or public land. Hunt unit boundaries may include private property or other excluded areas. Hunters must research land accessibility before hunting.

Limited-entry pronghorn (continued)

Archery hunts

Hunt name	Hunt #	Season dates
Box Elder, Snowville	PB5005	Aug. 21–Sept. 17
Box Elder, West	PB5006	Aug. 21–Sept. 17
Cache/Morgan-South Rich/Ogden	PB5007	Aug. 21–Sept. 17
Fillmore, Oak Creek South	PB5008	Aug. 21–Sept. 17
La Sal, Potash/South Cisco	PB5009	Aug. 21–Sept. 17
Mt Dutton/Paunsaugunt	PB5332	Aug. 21–Sept. 17
Nine Mile, Anthro-Myton Bench	PB5011	Aug. 21–Sept. 17
Nine Mile, Range Creek	PB5053	Aug. 21–Sept. 17
North Slope, Three Corners/West Daggett	PB5012	Aug. 21–Sept. 17
Panguitch Lake/Zion, North	PB5054	Aug. 21–Sept. 17
Pine Valley	PB5013	Aug. 21–Sept. 17
Plateau, Highlands (new hunt)	PB5064	Aug. 21–Sept. 17
San Juan, Hatch Point	PB5058	Aug. 21–Sept. 17
San Rafael, Desert	PB5055	Aug. 21–Sept. 17
San Rafael, North	PB5015	Aug. 21–Sept. 17
South Slope, Bonanza/Diamond Mtn	PB5016	Aug. 21–Sept. 17
South Slope, Vernal	PB5017	Aug. 21–Sept. 17
Southwest Desert	PB5018	Aug. 21–Sept. 17
West Desert, Riverbed	PB5019	Aug. 21–Sept. 17
West Desert, Rush Valley	PB5020	Aug. 21–Sept. 17
West Desert, Snake Valley	PB5021	Aug. 21–Sept. 17

Muzzleloader hunts

Hunt name	Hunt #	Season dates
Cache/Morgan-South Rich/Ogden	PB5022	Sept. 29–Oct. 7
Fillmore, Oak Creek South (new hunt)	PB5065	Sept. 29–Oct. 7
Nine Mile, Anthro-Myton Bench	PB5059	Sept. 29–Oct. 7

BLACK TEXT: At least one nonresident permit • BLUE TEXT: Resident permits only

HUNT TABLES

The Division does not guarantee access to any private or public land. Hunt unit boundaries may include private property or other excluded areas. Hunters must research land accessibility before hunting.

Limited-entry pronghorn (continued)

Muzzleloader hunts

Hunt name	Hunt #	Season dates
North Slope, Three Corners/West Daggett (new hunt)	PB5066	Sept. 29–Oct. 7
Panguitch Lake/Zion, North	PB5061	Sept. 29–Oct. 7
Pine Valley	PB5062	Sept. 29–Oct. 7
Plateau, Highlands (new hunt)	PB5067	Sept. 29–Oct. 7
San Rafael, North	PB5056	Sept. 29–Oct. 7
South Slope, Bonanza/Diamond Mtn	PB5060	Sept. 29–Oct. 7
Southwest Desert	PB5024	Sept. 29–Oct. 7

Any legal weapon (rifle) hunts

Hunt name	Hunt #	Season dates
Beaver	PB5025	Sept. 18–Sept. 26
Book Cliffs, Bitter Creek	PB5026	Sept. 18–Sept. 26
Book Cliffs, South	PB5027	Sept. 18–Sept. 26
Box Elder, Promontory	PB5028	Sept. 18–Sept. 26
Box Elder, Puddle Valley	PB5029	Sept. 18–Sept. 26
Box Elder, Snowville	PB5030	Sept. 18–Sept. 26
Box Elder, West	PB5031	Sept. 18–Sept. 26
Cache/Morgan-South Rich/Ogden	PB5032	Sept. 18–Sept. 26
Fillmore, Oak Creek South	PB5033	Sept. 18–Sept. 26
Kaiparowits	PB5034	Sept. 18–Sept. 26
La Sal, Potash/South Cisco	PB5035	Sept. 18–Sept. 26
Mt Dutton/Paunsaugunt	PB5331	Sept. 18–Sept. 26
Nine Mile, Anthro-Myton Bench	PB5037	Sept. 18–Sept. 26
Nine Mile, Range Creek	PB5038	Sept. 18–Sept. 26
North Slope, Summit	PB5039	Sept. 18–Sept. 26
North Slope, Three Corners/West Daggett	PB5040	Sept. 18–Sept. 26
Panguitch Lake/Zion, North	PB5041	Sept. 18–Sept. 26

BLACK TEXT: At least one nonresident permit • BLUE TEXT: Resident permits only

HUNT TABLES

The Division does not guarantee access to any private or public land. Hunt unit boundaries may include private property or other excluded areas. Hunters must research land accessibility before hunting.

Limited-entry pronghorn (continued)

Any legal weapon (rifle) hunts

Hunt name	Hunt #	Season dates
Pine Valley	PB5042	Sept. 18–Sept. 26
Plateau, Highlands (new hunt)	PB5063	Sept. 18–Sept. 26
San Juan, Hatch Point	PB5044	Sept. 18–Sept. 26
San Rafael, Desert	PB5045	Sept. 18–Sept. 26
San Rafael, North	PB5046	Sept. 18–Sept. 26
South Slope, Bonanza/Diamond Mtn	PB5047	Sept. 18–Sept. 26
South Slope, Vernal	PB5048	Sept. 18–Sept. 26
Southwest Desert	PB5049	Sept. 18–Sept. 26
West Desert, Riverbed	PB5050	Sept. 18–Sept. 26
West Desert, Rush Valley	PB5051	Sept. 18–Sept. 26
West Desert, Snake Valley	PB5052	Sept. 18–Sept. 26

Once-in-a-lifetime bull moose hunts

Permit fee: Resident \$413, Nonresident \$2,200

Use the hunt number to apply. Moose bonus point code: **MOO**

Hunt name	Hunt #	Season dates
Cache	MB6000	Sept. 18–Oct. 21
Chalk Creek[†]	MB6001	Sept. 18–Oct. 21
East Canyon[†]	MB6002	Sept. 18–Oct. 21
East Canyon, Morgan-Summit[†]	MB6003	Sept. 18–Oct. 21
Kamas	MB6004	Sept. 18–Oct. 21
Morgan-South Rich[†]	MB6005	Sept. 18–Oct. 21
North Slope, Summit	MB6006	Sept. 18–Oct. 21
North Slope, Three Corners/West Daggett	MB6007	Sept. 18–Oct. 21
Ogden [†]	MB6008	Sept. 18–Oct. 21
South Slope, Diamond Mtn/Vernal	MB6009	Sept. 18–Oct. 21
South Slope, Yellowstone	MB6010	Sept. 18–Oct. 21
Wasatch Mtns/Central Mtns	MB6011	Sept. 18–Oct. 21

[†] Mostly private lands

BLACK TEXT: At least one nonresident permit • BLUE TEXT: Resident permits only

HUNT TABLES

The Division does not guarantee access to any private or public land. Hunt unit boundaries may include private property or other excluded areas. Hunters must research land accessibility before hunting.

Once-in-a-lifetime bison hunts

Permit fee (except Antelope Island): Resident \$413, Nonresident \$2,200

Antelope Island permit fee: Resident \$1,110

Use the hunt number to apply. Bison bonus point code: **BIS**

Hunt name	Hunt #	Season dates
Antelope Island	BI6500	Dec. 6–Dec. 8
Book Cliffs (archery, hunter's choice)	BI6521	Aug. 21–Sept. 17
Book Cliffs (hunter's choice)	BI6517	Sept. 18–Sept. 26
Book Cliffs, Bitter Creek/South (hunter's choice)	BI6523	Oct. 9–Oct. 21
Book Cliffs (cow only)	BI6520	Nov. 20–Dec. 5
Book Cliffs, Little Creek Roadless (hunter's choice)	BI6519	Oct. 9–Oct. 21
Book Cliffs, Little Creek Roadless (cow only)	BI6524	Oct. 23–Nov. 2
Book Cliffs, Wild Horse Bench (hunter's choice, new hunt)	BI6526	Aug. 2, 2021–Jan. 31, 2022
Henry Mtns (hunter's choice)	BI6503	Nov. 6–Nov. 17
Henry Mtns (hunter's choice)	BI6504	Nov. 20–Dec. 1
Henry Mtns (hunter's choice)	BI6516	Dec. 4–Dec. 15
Henry Mtns (cow only)	BI6505	Dec. 18–Dec. 29
Henry Mtns (cow only)	BI6506	Jan. 1, 2022–Jan. 17, 2022
Henry Mtns (archery, hunter's choice)	BI6509	Jan. 18, 2022–Jan. 31, 2022

Once-in-a-lifetime desert bighorn sheep hunts

Permit fee: Resident \$513, Nonresident \$2,200

Use the hunt number to apply. Desert bighorn sheep bonus point code: **DBS**

Hunt name	Hunt #	Season dates
Henry Mtns	DS6600	Sept. 18–Nov. 10
Kaiparowits, East*	DS6601	Sept. 18–Nov. 10
Kaiparowits, Escalante	DS6602	Sept. 18–Nov. 10
Kaiparowits, West	DS6603	Sept. 18–Nov. 10
La Sal, Potash/South Cisco	DS6604	Sept. 18–Nov. 10
Pine Valley, Virgin River	DS6620	Oct. 30–Dec. 26

*Nonresidents may hunt both the Kaiparowits, East and Kaiparowits, Escalante subunits—Apply for #DS6601

BLACK TEXT: At least one nonresident permit • BLUE TEXT: Resident permits only

HUNT TABLES

The Division does not guarantee access to any private or public land. Hunt unit boundaries may include private property or other excluded areas. Hunters must research land accessibility before hunting.

Once-in-a-lifetime desert bighorn sheep hunts (continued)

Hunt name	Hunt #	Season dates
Pine Valley, Beaver Dam	DS6621	Oct. 30–Dec. 26
San Juan, Lockhart	DS6606	Sept. 18–Nov. 10
San Juan, North	DS6622	Sept. 18–Nov. 10
San Juan, San Juan River	DS6623	Sept. 18–Nov. 10
San Juan, South	DS6607	Sept. 18–Nov. 10
San Rafael, North	DS6609	Sept. 18–Nov. 10
San Rafael, Dirty Devil [§]	DS6608	Sept. 18–Nov. 10
San Rafael, Dirty Devil (archery, new hunt)	DS6624	Dec. 25, 2021–Jan. 16, 2022
San Rafael, South [†]	DS6610	Sept. 18–Nov. 10
Zion [^]	DS6611	Sept. 18–Oct. 15
Zion	DS6612	Oct. 16–Nov. 10

Once-in-a-lifetime Rocky Mountain bighorn sheep hunts

Permit fee: Resident \$513, Nonresident \$2,200

Use the hunt number to apply. Rocky Mountain bighorn sheep bonus point code: **RMB**

Hunt name	Hunt #	Season dates
Book Cliffs, South	RS6701	Oct. 30–Nov. 30
Box Elder, Newfoundland Mtn	RS6703	Oct. 9–Oct. 29
Box Elder, Newfoundland Mtn	RS6704	Oct. 30–Nov. 19
Box Elder, Newfoundland Mtn (archery)	RS6722	Nov. 20–Dec. 12
Central Mtns, Nebo	RS6725	Oct. 30–Nov. 30
Fillmore, Oak Creek	RS6720	Oct. 9–Oct. 29
Fillmore, Oak Creek	RS6726	Oct. 30–Nov. 19
Fillmore, Oak Creek (archery, new hunt)	RS6727	Nov. 20–Dec. 12

[§] Nonresidents may hunt both the San Rafael, Dirty Devil and the Henry Mtns units

[†] Nonresidents may hunt both the San Rafael, North and San Rafael, South subunits—Apply for #DS6610

[^] Nonresidents may hunt both the early and late any legal weapon seasons of the Zion unit—Apply for #DS6611

BLACK TEXT: At least one nonresident permit • BLUE TEXT: Resident permits only

HUNT TABLES

The Division does not guarantee access to any private or public land. Hunt unit boundaries may include private property or other excluded areas. Hunters must research land accessibility before hunting.

Once-in-a-lifetime Rocky Mountain bighorn sheep hunts (continued)

Hunt name	Hunt #	Season dates
Nine Mile, Gray Canyon	RS6712	Oct. 30–Nov. 30
Nine Mile, Jack Creek	RS6713	Oct. 30–Nov. 30
North Slope, Three Corners-Bare Top (boundary change)	RS6708	Sept. 20–Nov. 30
North Slope, Summit/West Daggett (boundary change)	RS6709	Oct. 30–Nov. 30
Oquirrh-Stansbury, West	RS6721	Oct. 30–Nov. 30
Wasatch Mtns, West	RS6724	Oct. 30–Nov. 30

Once-in-a-lifetime mountain goat hunts

Permit fee: Resident \$413, Nonresident \$2,200

Use the hunt number to apply. Mountain goat bonus point code: **GOA**

Hunt name	Hunt #	Season dates
Beaver	G06800	Sept. 11–Oct. 3
Beaver	G06801	Oct. 4–Nov. 15
Central Mtns, Nebo (archery)	G06821	Sept. 11–Oct. 3
Central Mtns, Nebo	G06803	Oct. 4–Nov. 30
Chalk Creek/Kamas, Uintas	G06804	Sept. 11–Oct. 31
La Sal, La Sal Mtns	G06817	Sept. 11–Nov. 30
Mt Dutton	G06814	Sept. 11–Nov. 30
North Slope/South Slope, High Uintas Central (archery)	G06815	Aug. 21–Sept. 10
North Slope/South Slope, High Uintas Central	G06805	Sept. 11–Oct. 31
North Slope/South Slope, High Uintas East	G06806	Sept. 11–Oct. 31
North Slope/South Slope, High Uintas Leidy Peak	G06807	Sept. 11–Oct. 31
North Slope/South Slope, High Uintas West	G06808	Sept. 11–Oct. 31
Ogden, Willard Peak	G06810	Sept. 11–Nov. 30
Wasatch Mtns, Box Elder Peak	G06818	Sept. 11–Nov. 30
Wasatch Mtns, Lone Peak	G06819	Sept. 11–Nov. 30
Wasatch Mtns, Provo Peak	G06813	Sept. 11–Nov. 30
Wasatch Mtns, Timpanogos	G06820	Sept. 11–Nov. 30

BLACK TEXT: At least one nonresident permit • BLUE TEXT: Resident permits only

HUNT TABLES

Cooperative Wildlife Management Units

Utah Admin. Rule R657-37

Utah's Cooperative Wildlife Management Unit (CWMU) program provides landowners with an economic incentive to keep their private range and forest lands as productive wildlife habitat.

The landowners receive vouchers for hunting permits, which they can sell for profit, as long as they also allow a percentage of public hunters on their lands.

If you're a Utah resident, there are two ways to obtain a CWMU permit: you can apply for one in the state's big game drawing, or you can obtain a permit voucher from the landowner or operator of the CWMU you want to hunt.

If you're not a resident of Utah, you cannot apply for a CWMU permit in the public drawing. You can, however, obtain a permit voucher directly from the CWMU landowner or operator.

Keep in mind that whether you draw or purchase a permit, you may not obtain more than one of each of the following permits during the 2021 big game season:

- Buck deer permit
- Bull elk permit
- Buck pronghorn permit

For example, if you draw a general-season buck deer permit—and then decide you want to hunt on a CWMU instead—you must surrender your general-season permit before the opening day of the season listed on your permit and before redeeming the private CWMU voucher for a permit.

Reminder: If you choose to surrender any big game permit you've drawn (to purchase/obtain a private CWMU voucher, for example), be sure to do so **at least 30 days before your hunt begins** or you could lose previously accrued preference or bonus points. For details, see page 10.

For more information on Utah's CWMU program, including details about individual properties, please visit wildlife.utah.gov/cwmu.

CWMU premium buck deer hunts

Permit fee: Resident \$168, Use the hunt number to apply.

Nonresidents may only obtain a CWMU permit directly through the operator.

Hunt name	Hunt #	County	Public permits
Alton	DB1200	Kane	3

CWMU management and cactus buck deer hunts

Permit fee: Resident \$80, use the hunt number to apply.

Nonresidents may only obtain a CWMU permit directly through the operator.

Hunt name	Hunt #	County	Public permits
Alton (management buck)	DB1201	Kane	1
Alton (cactus buck)	DB1334	Kane	1

For more details about individual properties, including public-hunt dates and contact information, please visit wildlife.utah.gov/cwmu.

HUNT TABLES

CWMU buck deer hunts

Permit fee: Resident \$40, use the hunt number to apply.

Nonresidents may only obtain a CWMU permit directly through the operator.

For more information on the CWMU Program, see page 60.

Hunt name	Hunt #	County	Public permits
5S Land and Livestock (new hunt)	DB1333	Morgan	1
Antelope Creek	DB1202	Duchesne	1
Avintaquin Canyon	DB1203	Duchesne	1
Bally Watts	DB1204	Morgan/Weber	2
Bar J Ranch	DB1205	Sevier	2
Bear Mountain	DB1206	Sanpete	1
Bear Springs	DB1207	Morgan/Weber	1
Black Hawk	DB1208	Carbon	1
Blind Springs	DB1209	Box Elder	1
Blue Creek	DB1210	Box Elder	1
Blue Spring Hills	DB1211	Box Elder	1
Bluebell	DB1212	Cache/Weber	1
Boobe Hole	DB1213	Sevier	2
Buckhorn Ranch	DB1215	Duchesne/Wasatch	1
Castle Valley Outdoors	DB1216	Emery	1
Causey Spring	DB1217	Weber	1
Chimney Rock	DB1219	Morgan/Summit	2
Clear Creek (new hunt)	DB1328	Box Elder	1
Coldwater Ranch	DB1222	Cache	2
Conover-Jensen	DB1223	Carbon	3
Cotton Thomas	DB1224	Box Elder	1
Deer Creek	DB1320	Wasatch	1
Deer Haven	DB1227	San Juan	2
Deseret	DB1228	Morgan/Rich/Weber	14
Dilly Ranch	DB1229	Box Elder	1
Double Cone	DB1325	Box Elder	1

For more details about individual properties, including public-hunt dates and contact information, please visit wildlife.utah.gov/cwmu.

HUNT TABLES

CWMU buck deer hunts (continued)

Hunt name	Hunt #	County	Public permits
Double R Ranch	DB1230	Wasatch	3
Dove Creek	DB1231	Box Elder	2
Durst Mountain	DB1232	Morgan	2
East Fork Chalk Creek	DB1233	Summit	4
East Zion	DB1234	Kane	2
Engineer Springs	DB1236	Box Elder	1
Ensign Ranches	DB1237	Morgan/Rich/Summit	4
Folley Ridge	DB1238	Morgan	3
George Creek	DB1240	Box Elder	1
Golden Spike	DB1241	Box Elder	1
Grass Valley/Clark Canyon	DB1242	Summit	15
Grazing Pasture	DB1243	Sevier	1
Green Canyon	DB1244	Cache	1
Guildersleeve	DB1245	Morgan	2
Hardscrabble	DB1246	Davis/Morgan/Salt Lake	2
Heaston East	DB1248	Salt Lake	2
Hiawatha	DB1249	Carbon/Emery	1
Indian Canyon (new hunt)	DB1329	Duchesne	1
Indian Creek	DB1250	Box Elder	2
Indian Head	DB1251	Carbon/Duchesne/Utah	2
Ingham Peak	DB1252	Box Elder	4
Iron Spring (new hunt)	DB1330	Iron	1
J.B. Ranch	DB1253	Grand/San Juan	2
Jacob's Creek	DB1317	Davis/Morgan	2
Johnson Mountain Ranch	DB1255	Sevier	1
Junction Valley	DB1256	Box Elder	5
Lazy H Ranch	DB1257	Morgan	1
Little Red Creek	DB1258	Wasatch	1
Lone Tree Tunnel Hollow	DB1259	Morgan/Summit	2

For more details about individual properties, including public-hunt dates and contact information, please visit wildlife.utah.gov/cwmu.

HUNT TABLES

CWMU buck deer hunts (continued)

Hunt name	Hunt #	County	Public permits
Mecham Ridge	DB1321	Rich	1
Middle Ridge	DB1260	Rich	4
Minnie Maud Ridge	DB1261	Carbon/Duchesne	5
Moon Ranch	DB1263	Duchesne	1
Mountain Meadow	DB1264	Box Elder	1
Mountain Sky Ranch	DB1327	Utah	1
Mountain Top	DB1265	Morgan/Summit	2
Neil Creek	DB1267	Summit	2
North Peaks	DB1303	Box Elder	2
North Promontory	DB1269	Box Elder	2
Nucor West	DB1270	Box Elder	1
Old Woman Plateau	DB1272	Sevier	3
Pahvant Ensign	DB1322	Millard/Sevier	1
Park Valley Hereford	DB1273	Box Elder	10
Patmos Ridge	DB1274	Carbon	1
Pine Canyon	DB1275	Morgan	3
Pisgah Mountain	DB1286	Box Elder/Cache	2
Plymouth Peak	DB1276	Box Elder	1
Pocatello Valley	DB1277	Box Elder	1
Powder Mountain	DB1278	Cache/Weber	1
Preston Nutter Ranch	DB1279	Carbon	1
Promontory Point	DB1280	Box Elder	1
Raft River (new hunt)	DB1331	Box Elder	3
Rattlesnake Pass	DB1281	Box Elder	3
Redd Ranches	DB1282	Grand/San Juan	2
Roan Cliffs	DB1283	Carbon	1
Rock House	DB1323	Juab	1
Rosette	DB1326	Box Elder	1
Royal Ivory Outfitters	DB1324	Summit	1

For more details about individual properties, including public-hunt dates and contact information, please visit wildlife.utah.gov/cwmu.

HUNT TABLES

CWMU buck deer hunts (continued)

Hunt name	Hunt #	County	Public permits
Sand Creek	DB1285	Duchesne	1
Scofield Canyons	DB1287	Carbon/Utah	1
Scofield West	DB1288	Carbon/Utah	2
Sharp Mountain	DB1289	Cache/Weber	2
Skull Crack	DB1290	Morgan/Weber	1
Skull Valley South	DB1291	Tooele	1
Soldier Summit	DB1292	Carbon/Utah/Wasatch	2
South Canyon	DB1293	Box Elder/Cache	2
Spring Creek Acres	DB1294	Cache	1
Spring Creek/Dodge	DB1295	San Juan	5
Stillman Creek Ranch	DB1297	Summit	4
Strawberry Ridge	DB1298	Cache/Rich	2
Thatcher Mountain	DB1300	Box Elder	1
Three C	DB1301	Wasatch	2
TJ Cattle Company	DB1302	Morgan	1
Two Bear	DB1304	Summit	1
Wallsburg	DB1305	Wasatch	1
Washakie	DB1306	Box Elder	1
Weber Florence Creek	DB1307	Summit	5
West Ridge (new hunt)	DB1332	Carbon	3
West Willow Creek Ranch	DB1309	Uintah	4
White's Valley	DB1310	Box Elder	1

For more details about individual properties, including public-hunt dates and contact information, please visit wildlife.utah.gov/cwmu.

HUNT TABLES

CWMU any bull elk hunts

Permit fee: Resident \$285, use the hunt number to apply.

Nonresidents may only obtain a CWMU permit directly through the operator.

For more information on the CWMU Program, see page 60.

Hunt name	Hunt #	County	Public permits
Alton	EB3500	Kane	2
Avintaquin Canyon (new hunt)	EB3608	Duchesne	1
Bar J Ranch	EB3501	Sevier	2
Bear Mountain	EB3502	Sanpete	1
Bear Springs	EB3503	Morgan/Weber	1
Black Hawk	EB3504	Carbon	1
Boobe Hole	EB3505	Sevier	2
Causey Spring	EB3506	Weber	1
Chimney Rock	EB3508	Morgan/Summit	2
Coldwater Ranch	EB3509	Cache	2
Conover-Jensen	EB3510	Carbon	1
Cotton Thomas	EB3511	Box Elder	1
Deseret	EB3514	Morgan/Rich/Weber	17
Double Cone	EB3515	Box Elder	1
Double R Ranch	EB3604	Wasatch	1
Durst Mountain	EB3516	Morgan	3
East Fork Chalk Creek	EB3517	Summit	3
Ensign Ranches	EB3519	Morgan/Rich/Summit	4
Folley Ridge	EB3520	Morgan	2
Grass Valley/Clark Canyon	EB3521	Summit	10
Grazing Pasture	EB3522	Sevier	1
Guildersleeve	EB3523	Morgan	1
Hardscrabble	EB3524	Davis/Morgan/Salt Lake	2
Heaston East	EB3525	Salt Lake	3
Hiawatha	EB3526	Carbon	1
Indian Head	EB3527	Carbon/Duchesne/Utah	2

For more details about individual properties, including public-hunt dates and contact information, please visit wildlife.utah.gov/cwmu.

HUNT TABLES

CWMU any bull elk hunts (continued)

Hunt name	Hunt #	County	Public permits
Ingham Peak	EB3528	Box Elder	2
J.B. Ranch	EB3529	Grand/San Juan	1
Johnson Mountain Ranch	EB3531	Sevier	2
Jump Creek	EB3532	Carbon	1
Junction Valley	EB3533	Box Elder	1
Little Red Creek	EB3534	Wasatch	2
Lone Tree Tunnel Hollow	EB3535	Morgan/Summit	2
Minnie Maud Ridge	EB3536	Carbon/Duchesne	4
Moon Ranch	EB3538	Duchesne	2
Mountain Sky Ranch	EB3606	Utah	1
Mountain Top	EB3539	Morgan/Summit	3
North Peaks	EB3565	Box Elder	1
Old Woman Plateau	EB3540	Sevier	2
Pahvant Ensign	EB3603	Millard/Sevier	1
Patmos Ridge	EB3541	Carbon	1
Powder Mountain	EB3542	Cache/Weber	1
Preston Nutter Ranch	EB3543	Carbon	2
Redd Ranches	EB3544	Grand/San Juan	2
Riverview Ranch LLC	EB3545	Box Elder	2
Roan Cliffs	EB3546	Carbon	1
Royal Ivory Outfitters (new hunt)	EB3609	Summit	3
Sand Creek	EB3547	Duchesne	1
Scofield Canyons	EB3548	Carbon/Utah	1
Scofield East	EB3549	Carbon	1
Scofield West	EB3550	Carbon/Utah	1
Sharp Mountain (new hunt)	EB3610	Cache	2
SJ Ranch	EB3551	Cache	1
Skull Crack	EB3552	Morgan/Weber	1

For more details about individual properties, including public-hunt dates and contact information, please visit wildlife.utah.gov/cwmu.

HUNT TABLES

CWMU any bull elk hunts (continued)

Hunt name	Hunt #	County	Public permits
Soldier Summit	EB3553	Carbon/Utah/Wasatch	2
South Canyon	EB3554	Box Elder/Cache	2
Spring Creek/Dodge	EB3555	San Juan	2
Strawberry Ridge	EB3557	Cache/Rich	2
Three C	EB3559	Wasatch	2
Two Bear	EB3561	Summit	4
Wallsburg	EB3562	Wasatch	2
Weber Florence Creek	EB3563	Summit	7
West Ridge (new hunt)	EB3611	Carbon	1
West Willow Creek Ranch	EB3607	Uintah	1

CWMU buck pronghorn hunts

Permit fee: Resident \$55, use the hunt number to apply.

Nonresidents may only obtain a CWMU permit directly through the operator.

For more information on the CWMU Program, see page 60.

Hunt name	Hunt #	County	Public permits
Allen Ranch	PB5325	Utah	1
Antelope Creek	PB5300	Duchesne	3
Castle Valley Outdoors (new hunt)	PB5338	Emery	2
Cedar Springs	PB5326	Box Elder	1
Cottonwood Ridge	PB5327	Duchesne	2
Deseret	PB5302	Morgan/Rich/Weber	16
Ensign Ranches	PB5303	Morgan/Rich/Summit	2
George Creek	PB5330	Box Elder	1
Heist	PB5337	Beaver/Iron	2
Iron Spring (new hunt)	PB5339	Iron	1

For more details about individual properties, including public-hunt dates and contact information, please visit wildlife.utah.gov/cwmu.

HUNT TABLES

CWMU buck pronghorn hunts (continued)

Permit fee: Resident \$55, use the hunt number to apply.
Nonresidents may only obtain a CWMU permit directly through the operator.
For more information on the CWMU Program, see page 60.

Hunt name	Hunt #	County	Public permits
Pahvant Ensign	PB5328	Millard/Sevier	3
Park Valley	PB5305	Box Elder	2
Rabbit Creek	PB5306	Rich	1
RLF Deep Creek	PB5307	Box Elder	2
Skull Valley South	PB5309	Tooele	1
Snowville Flat	PB5329	Box Elder	2
The Rose of Snowville	PB5311	Box Elder	2
TL Bar Ranch	PB5312	Box Elder/Tooele	1
West Willow Creek Ranch	PB5313	Uintah	1
Westlake	PB5314	Utah	3
Zane	PB5315	Iron	2

CWMU bull moose hunts

Permit fee: Resident \$413, Use the hunt number to apply.
Nonresidents may only obtain a CWMU permit directly through the operator.
For more information on the CWMU Program, see page 60.

Hunt name	Hunt #	County	Public permits
Bear Springs	MB6200	Morgan/Weber	1
Beaver Hollow	MB6201	Morgan/Rich	2
Causey Spring	MB6202	Weber	1
Chimney Rock	MB6240	Morgan/Summit	1
Deseret	MB6206	Morgan/Rich/Weber	2

For more details about individual properties, including public-hunt dates and contact information, please visit wildlife.utah.gov/cwmu.

HUNT TABLES

CWMU bull moose hunts (continued)

Permit fee: Resident \$413, Use the hunt number to apply.
Nonresidents may only obtain a CWMU permit directly through the operator.
For more information on the CWMU Program, see page 60.

Hunt name	Hunt #	County	Public permits
Durst Mountain	MB6207	Morgan	1
East Fork Chalk Creek	MB6208	Summit	2
Ensign Ranches	MB6209	Morgan/Rich/Summit	1
Folley Ridge	MB6210	Morgan	1
Grass Valley/Clark Canyon	MB6211	Summit	3
Hardscrabble	MB6251	Davis/Morgan/Salt Lake	1
Ingham Peak	MB6257	Box Elder	1
Jacob's Creek	MB6252	Davis/Morgan	1
Junction Valley	MB6262	Box Elder	1
Moon Ranch (new hunt)	MB6263	Duchesne	1
Powder Mountain	MB6216	Cache/Weber	1
Sand Creek (new hunt)	MB6264	Duchesne	1
Sharp Mountain	MB6217	Cache/Weber	1
SJ Ranch	MB6254	Cache	1
Skull Crack	MB6219	Morgan/Weber	2
South Canyon	MB6220	Box Elder/Cache	1
Strawberry Ridge	MB6222	Cache/Rich	2
Three C	MB6223	Wasatch	1
Two Bear	MB6224	Summit	2
Wallsburg	MB6225	Wasatch	1
Weber Florence Creek	MB6226	Summit	3

For more details about individual properties, including public-hunt dates and contact information, please visit wildlife.utah.gov/cwmu.

DEFINITIONS

Utah Code § 23-13-2 and Utah Admin. Rules R657-5-2, R657-5-47, R657-37 and R657-67

The following definitions explain terms used in this guidebook. The *2021 Utah Big Game Field Regulations* guidebook (available in June 2021) will contain additional definitions that focus on hunting, harvesting and possessing big game.

Any legal weapon means any weapon listed at wildlife.utah.gov/R657-05 (see R657-5-8 through R657-5-12) or in the Firearms and Archery Equipment section of the *2021 Utah Big Game Field Regulations* guidebook (available in June 2021).

Big game means species of hoofed protected wildlife.

Buck deer means a deer with antlers longer than five inches.

Buck pronghorn means a pronghorn with horns longer than five inches.

Bull elk means an elk with antlers longer than five inches.

Bull moose means a moose with antlers longer than its ears.

Cactus buck means a buck deer with velvet covering at least 50 percent of the antlers during the season dates established by the Wildlife Board for a cactus buck deer hunt.

Certificate of registration means a document issued under any rule or proclamation of the Wildlife Board granting authority to engage in activities not covered by a license, permit or tag.

CWMU means Cooperative Wildlife Management Unit.

Domicile means the place where an individual has a fixed permanent home and principal establishment. It is also the place to which the individual, if absent, intends to return; and

in which the individual, and the individual's family voluntarily reside, not for a special or temporary purpose, but with the intention of making a permanent home. To create a new domicile, an individual shall abandon the old domicile and be able to prove that a new domicile has been established.

Draw lock means a mechanical device used to hold and support the draw weight of a conventional or compound bow at any increment of draw, until released by the archer using a trigger mechanism and safety attached to the device.

Drone means an autonomously controlled, aerial vehicle of any size or configuration that is capable of controlled flight without a human pilot aboard.

Handgun-archery-muzzleloader-shotgun-only hunt (HAMS hunt) means a limited-entry hunt with very specialized weapon requirements. Before you apply for one of these hunts, see R657-5-48 to confirm whether the weapon you plan to use is legal for the hunt.

Hunter's choice means either sex may be taken.

Hunting means to take or pursue a reptile, amphibian, bird or mammal by any means.

Hunting mentor means a Resident or Nonresident individual possessing a valid permit issued by the Division to take protected wildlife in Utah and who is 21 years of age or older at the time of application for the Mentor Program.

Limited-entry hunt means any hunt that is identified as limited-entry and listed in the hunt table of this guidebook, and that does not include general or once-in-a-lifetime hunts.

Limited-entry permit means any permit obtained for a limited-entry hunt by any means, including multi-season premium limited-entry permits, premium limited-entry permits, multi-season limited-entry permits, limited-entry permits, cactus buck permits, management buck permits, handgun-archery-muzzleloader-shotgun-only permits, conservation permits, expo permits, sportsman permits, CWMU permits and limited-entry landowner permits.

Nonresident means a person who does not qualify as a resident.

Once-in-a-lifetime hunt means any hunt that is identified as once-in-a-lifetime and listed in the hunt table of this guidebook, and that does not include general or limited-entry hunts.

Once-in-a-lifetime permit means any permit obtained for a once-in-a-lifetime hunt by any means, including conservation permits, expo permits, sportsman permits, CWMU permits and limited-entry landowner permits.

Permit means a document, including a stamp, which grants authority to engage in specific activities under the Wildlife Resources Code or a rule or proclamation of the Wildlife Board.

Possession means actual or constructive possession.

Qualifying minor means a Utah Resident who is under 18 at the time of application for the Mentor Program and who is otherwise eligible to lawfully hunt.

Ram means a male desert bighorn sheep or Rocky Mountain bighorn sheep older than one year of age.

Resident means a person who has a domicile (fixed permanent home and principal establishment) in Utah for six consecutive months immediately preceding the purchase of a license or permit, AND DOES NOT claim residency for hunting, fishing or trapping in any other state or country.

An individual retains Utah residency if he or she leaves Utah to serve in the armed forces of the United States, or for religious or educational purposes, and does NOT claim residency for hunting, fishing or trapping in any other state or country.

Members of the armed forces of the United States and dependents are residents as of the date the member reports for duty under assigned orders in Utah, if:

- the member is NOT on temporary duty in Utah and does NOT claim residency for hunting, fishing or trapping in any other state or country.
- the member presents a copy of his or her assignment orders to a Division office to verify the member's qualification as a resident.

A nonresident attending an institution of higher learning in Utah as a full-time student may qualify as a resident if the student has been present in Utah for 60 consecutive days immediately preceding the purchase of the license or permit and does NOT claim residency for hunting, fishing or trapping in any other state or country.

A Utah resident license or permit is invalid if a resident license for hunting, fishing or trapping is purchased in any other state or country.

An individual DOES NOT qualify as a resident if he or she is an absentee landowner paying property tax on land in Utah.

Shed antlers are antlers that a big game animal has dropped naturally as part of its annual lifecycle.

Shed horns are the sheaths from the horns of a pronghorn that the animal has dropped naturally as part of its annual lifecycle. Pronghorn are the only big game animals that shed their horns.

Sell means to offer or possess for sale, barter, exchange or trade, or the act of selling, bartering, exchanging or trading.

Spike bull means a bull elk which has at least one antler beam with no branching above the ears. Branched means a projection on an antler longer than one inch, measured from its base to its tip.

Tag means a card, label or other identification device issued for attachment to the carcass of protected wildlife.

Take means to:

- hunt, pursue, harass, catch, capture, possess, angle, seine, trap or kill any protected wildlife; or
- attempt any of the above actions.

Wildlife document means a permit to hunt protected wildlife or Division-issued authorization to share such a permit.