

# FISHING REGULATIONS



Saltwater Angler Recognition

Page 18-19



▶ **New State Reef Fish Survey Requirement**  
Page 5

▶ **New Fish Rules App Partnership**  
Page 6

▶ **New Biscayne National Park Regulations**  
Page 14

Applies to Florida State Waters of the Gulf and Atlantic | Issued: July 2020



▶ Search MyFWC on Social Media



Please visit [MyFWC.com/Fishing/Saltwater/Recreational](https://www.fwc.com/Fishing/Saltwater/Recreational) for the most current regulations

*Always be ready for a day on the water — set your licenses and permits to renew with FWC's Auto-Renew feature!*





YOUR ENJOYMENT MADE EASY

**GEICO**<sup>®</sup>  
FOR YOUR BOAT

Get a GEICO quote for your boat and, in just 15 minutes, you'll know how much you could be saving. If you like what you hear, you can buy your policy right on the spot. Then let us do the rest while you enjoy your free time with peace of mind.

[geico.com/boat](https://geico.com/boat) | 1-800-865-4846

Some discounts, coverages, payment plans, and features are not available in all states, in all GEICO companies, or in all situations. Boat and PWC coverages are underwritten by GEICO Marine Insurance Company. In the state of CA, program provided through Boat Association Insurance Services, license #0H87086. GEICO is a registered service mark of Government Employees Insurance Company, Washington, DC 20076; a Berkshire Hathaway Inc. subsidiary. © 2020 GEICO 20\_206641



# CONTENTS



Robert Campbell and family

<b>2020 FWC Commission Meeting Dates and Locations</b> .....	2
<b>Commissioner's Message</b> .....	3
<b>Lionfish Challenge</b> .....	4
<b>State Reef Fish Survey</b> .....	5
<b>Know Your Management Zones</b> .....	6-7
<b>Fish Rules App</b> .....	6
<b>Basic Regulations:</b>	
Reef Fish and Pelagics .....	8-9
Coastal Species and Unregulated Species .....	10
Crustaceans and Mollusks.....	11
Sharks and Prohibited Species.....	11
<b>Marine Life Regulations</b> .....	12
<b>Fish Handling</b> .....	13
<b>New Biscayne National Park Regulations</b> .....	14
<b>Spearing</b> .....	16-17
<b>Angler Recognition Programs</b> .....	18-19
<b>Licenses and Permits</b> .....	20
<b>FWC Offices</b> .....	21
<b>FWC Division of Law Enforcement</b> .....	21



## Buy your license online!

**When you buy your license online, it's fast, convenient and saves time and travel.**

You can obtain a license 24 hours a day at [GoOutdoorsFlorida.com](http://GoOutdoorsFlorida.com) and begin fishing immediately!

Licenses are also available toll-free at 1-888-FISHFLORIDA (1-888-347-4356). Processing fees apply to telephone and Internet sales.

## Contact us

Go to [MyFWC.com](http://MyFWC.com) for up-to-date information on recreational saltwater fishing regulations, news and events as well as resources, publications and videos.

Visit the FWC's Fish and Wildlife Research Institute online at [MyFWC.com/Research](http://MyFWC.com/Research)

For federal fishing regulations, please contact:

- **Gulf of Mexico Fishery Management Council**  
888-833-1844  
[www.gulfcouncil.org](http://www.gulfcouncil.org)
- **South Atlantic Fishery Management Council**  
866-SAFMC-10  
[www.safmc.net](http://www.safmc.net)
- **National Marine Fisheries Service (NOAA Fisheries)**  
727-824-5301  
[www.nmfs.noaa.gov](http://www.nmfs.noaa.gov)

## For additional information please contact:

Florida Fish and Wildlife Conservation Commission  
[MyFWC.com](http://MyFWC.com)

Division of Marine Fisheries Management  
1875 Orange Ave East  
Tallahassee, Florida 32311  
850-487-0554

The Florida Fish and Wildlife Conservation Commission does not allow discrimination on the basis of race, color, sex, religion, national origin, age or disability. If you believe you have been discriminated against in any program, activity or facility of this agency which receives Federal financial assistance, you should contact/write to:

Florida Fish and Wildlife Conservation Commission, Office of Human Resources, 620 South Meridian Street, Tallahassee, FL 32399-1600; Telephone 850-488-6411

or contact/write to: Civil Rights Accessibility Coordinator for Public Access, U.S. Fish and Wildlife Service, Wildlife and Sport Fish Restoration Program, 5275 Leesburg Pike, Falls Church, VA 22041; Telephone 703-358-2349 or 703-358-2131.

## Wildlife alert reward program

Report fish and wildlife law violations by calling toll-free 1-888-404-FWCC (3922); on cell phones, dial \*FWC or #FWC depending on service carrier; or click [MyFWC.com/Contact](http://MyFWC.com/Contact).

## On the cover

Noelle Prichard with a black drum.

Photo by Justin Wallheiser.

Have a picture for the cover?

Please send your photographs to: [Saltwater@MyFWC.com](mailto:Saltwater@MyFWC.com).





## Introduction

This publication is provided as a guide to Florida fishing laws and regulations. The Florida Administrative Code is the final authority on fishing laws. The Florida Fish and Wildlife Conservation Commission (FWC) strives to ensure information in this booklet is accurate, but assumes no liability for any errors that occur in this publication. Contact the FWC if you have any questions on issues not covered in this booklet. A continuously updated electronic version of this publication is available at [MyFWC.com/Fishing](http://MyFWC.com/Fishing) by clicking on "Saltwater" and "Recreational Regulations."

## About licenses and permits

The money collected from saltwater fishing licenses and permits is used to improve and restore fish habitat and for marine fisheries research, law enforcement and public education on marine resources. Recreational licenses and permits, including reprints, are available at [GoOutdoorsFlorida.com](http://GoOutdoorsFlorida.com), tax collectors' offices, license agents, or by calling toll-free 888-FISH-FLORIDA (347-4356). Handling fees apply to telephone and Internet sales. See more information on page 20.

## Thank you for contributing to conservation

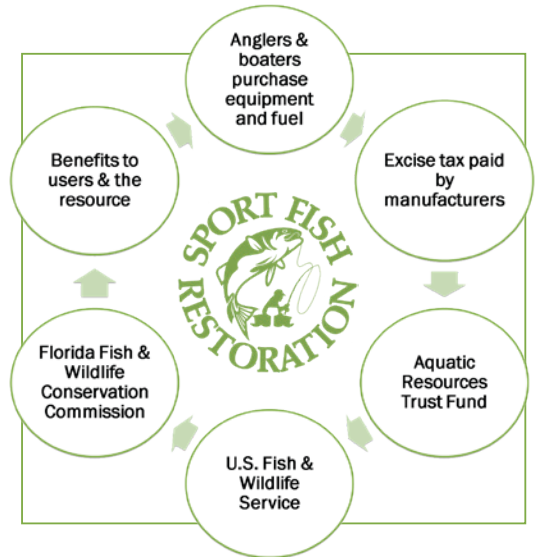
Your purchases of fishing equipment, motorboat fuel and fishing licenses help improve fishing and boating opportunities in Florida! Through the Sport Fish Restoration program, a federal "user-pay, public-benefit" system of conservation, millions of dollars in funding each year go toward fisheries research, stock enhancement, artificial reefs, boating access improvements, angler outreach and aquatic education. To learn more, visit [MyFWC.com/SFR](http://MyFWC.com/SFR)

## 2020 Commission meeting dates and locations

Subject to change due to availability of appropriate facilities to hold the meeting.

- July 22–23, 2020
- October 7–8, 2020
- December 16–17, 2020

\*Dates subject to change



For more information about Commission meeting dates, times, locations and agendas, visit [MyFWC.com](http://MyFWC.com) and click on "About" and "Commission Meetings" on the top of the page.

# Make reel memories.

Stuart, located in Martin County, is known as the Sailfish Capital of the World. Sitting on the most biodiverse estuary in the Northern Hemisphere, Martin County is home to 100 artificial reef systems and over 800 species of fish. Its climate, waterways, natural environment and opportunity for diverse catches make it a mecca for fishermen and nautical explorers year-round. An array of unique shops, fine restaurants, great golf courses and quiet beaches make a day ashore fun, too. Inshore, offshore, saltwater or fresh, head out for an adventure and reel in the memories.

Plan your trip at [discovermartin.com](http://discovermartin.com)



## Online Resources Abound

We live in a world where the internet is always with us, whether we are at home or on the water. At FWC, we are making sure more of our resources are online, from tools to help you know the most current regulations, to resources that allow anglers to carry their license with them on their phone and more. Read on to learn more about some of our favorite tools.

The FWC has many ways to carry your regulations with you, from our mobile-friendly website, MyFWC.com, to our newest partnership with the Fish Rules app. Go to MyFWC.com/Marine to check out our "Regulations by Species" pages and our printable Quick Chart, a quick guide found online and in our printed Saltwater Regulations Publication. Find out what to fish for by month by using our At-a-Glance monthly season calendars. Stay up-to-date by signing up online for one of our many emailed publications including our monthly Fishing in the Know newsletter, our quarterly Gone Coastal column, or pick and choose what kinds of news you wish to receive from us and how (email or text). Learn more at MyFWC.com/News.

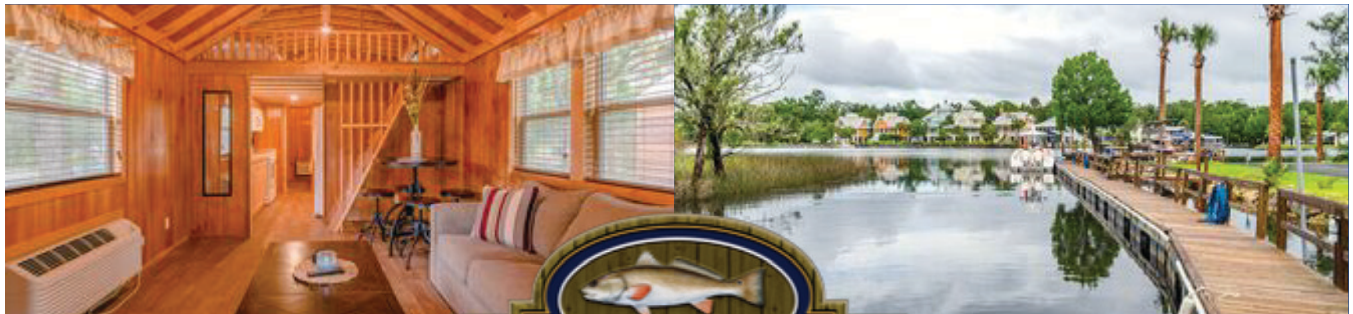
The Fish Rules app can be used by anglers heading offshore to find current fishing regulations, even when away from service. In addition, a new freshwater version of the app is being created and is anticipated to be rolled out later this summer. Learn more about this partnership on page 6 of this publication.

Want your license on your phone? Check out the FWC's licensing app, Fish | Hunt Florida, where you can purchase your license and store it, so you don't have to bring your paper or hard card with you. You can also use the Fish | Hunt Florida app to check daily tides, sunrise and sunset times, find boat ramps near you, and even access the MyFWC.com website.

Interested in learning or teaching others about how to saltwater fish? Check out our instructional videos at YouTube.com/FWCSaltwaterFishing or our online resources at MyFWC.com/Education. We have tons of printable educational options such as coloring books and more at MyFWC.com/Lionfish and MyFWC.com/Marine by clicking on "Saltwater Publications."

Get inspired to fish for different species by participating in our Catch a Florida Memory program at CatchaFloridaMemory.com. This program rewards anglers for their fishing efforts and includes Grand Slams (catch 3 specific fish in 24 hours), Saltwater Fish Life List (catch all 70 species on the list), Reel Big Fish (get rewarded for extraordinarily-sized catches) and the Florida Saltwater Fishing Records program as well. Learn more on page 18 of this publication.

This is just a small list of the online resources we offer as an agency and new resources are being added every day. We hope you find these resources useful when at home or on the water.



THE PERFECT ESCAPE IN THE HEART OF OLD FLORIDA

**Book your dream getaway today at 352.498.3222**

WWW.STHRCLUB.COM





# Gear Up! The Challenge is on!

Now is the time to register for the 2020 Lionfish Challenge! The Lionfish Challenge is an incentive program that rewards harvesters for their lionfish removals. With a tiered system, everybody can be a winner. The participant who harvests the most lionfish will be crowned the Lionfish King/Queen. The Challenge began May 22 and will run through Sept. 7, and you can register at any time.

There are two categories: recreational (# of lionfish) and commercial (lbs of lionfish). Participants with an active Saltwater Products License and lionfish sales within the last year will automatically be included in the commercial category. The recreational category is open to all divers who do not have a SPL.

The Challenge has a tiered prize system that allows everyone to be rewarded for their removals. To qualify for the Challenge, harvesters must collect 20 lionfish (recreational) or 20 lbs of lionfish (commercial). Once those initial lionfish have been submitted, the participant will receive a commemorative 2020 Lionfish Challenge Coin and Dri-Fit long sleeve T-shirt. The prize tiers are as follows:

- 50 lionfish (100 lbs)
- 100 lionfish (200 lbs)
- 200 lionfish (400 lbs)
- 300 lionfish (600 lbs)
- 400 lionfish (800 lbs)

### How to submit catches:

Recreational – the first 20 fish must be Submitted to FWC via the harvest/photo submission form located at [FWCReefRangers.com](http://FWCReefRangers.com). Specific photo requirements can be found on the [FWCReefRangers.com](http://FWCReefRangers.com) website. After the qualifying tier has been met, the harvester must submit their lionfish tails with their information (harvester name, date of harvest, and signature) to a verified checkpoint.

Commercial – catches are submitted via electronic trip tickets. The trip tickets must include the harvester's name, date of harvest, amount harvested (lbs.), and the harvester's signature to [FWCReefRangers.com](http://FWCReefRangers.com).



### Lionfish Challenge Features

Bi-weekly raffles will be held, and all qualified participants will be eligible to win.

A new component this year will be monthly Mini-Challenges. The winners will be announced each month and rewarded with substantial prizes.

The winners of the Lionfish Challenge will be announced at the Lionfish Removal and Awareness Festival held Sept. 11-13 at the HarborWalk Village in Destin, FL. You can register for the 2020 Lionfish Challenge and find more information at [www.FWCReefRangers.com/Lionfish-Challenge](http://www.FWCReefRangers.com/Lionfish-Challenge). Questions regarding the challenge can be sent to [Lionfish@MyFWC.com](mailto:Lionfish@MyFWC.com).



Challenge participants Tazz Felde, Bill Bowles, Regan Lyon, Rick Jones, Jason Spears, Aaron Maurer, Markita Andrews with their 131 lionfish.



# Are You a State Reef Fish Angler?

Beginning July 1, the State Reef Fish Survey (SRFS) will replace the successful Gulf Reef Fish Survey and help provide more timely and precise data on important reef fish statewide.

As part of this program, recreational anglers and divers who fish for or possess certain reef fish from a private vessel will need to obtain the State Reef Fish Angler designation. This will help FWC collect information about recreational reef fish directly from the people that fish for these species.

## Who needs to obtain the State Reef Fish Angler designation?

Anyone 16 and older on a private boat who intends to recreationally fish for or possess one or more of the following reef fish species:

- mutton snapper (new)
- yellowtail snapper (new)
- hogfish (new)
- red snapper
- vermilion snapper
- gag grouper
- red grouper
- black grouper
- greater amberjack
- lesser amberjack
- banded rudderfish
- almaco jack
- gray triggerfish

This includes fishermen who are 65 and older. Learn more about exemptions and sign up requirements at [MyFWC.com/SRFS](http://MyFWC.com/SRFS).

## How do I sign up?

Signing up for the State Reef Fish Angler designation is easy and no-cost. Beginning July 1, it is available anywhere saltwater fishing licenses are sold ([GoOutdoorsFlorida.com](http://GoOutdoorsFlorida.com), Fish|Hunt Florida mobile app, 1-888-FISHFLORIDA (347-4356), or at tackle shops, sporting goods stores, and tax collectors' offices).

If you are a Gulf Reef Fish Angler, your designation will remain valid until it expires and will meet the new SRFS statewide requirement. You do not need a State Reef Fish Angler designation until your current Gulf designation expires.

Don't forget to carry proof of your designation when fishing for reef fish from a private vessel.

## How does SRFS and the State Reef Fish Angler designation improve recreational data?

SRFS relies on two methods to collect vital information on recreational fishing for reef fish: a mail survey and in-person interviews.

- Each month, a group of State Reef Fish Anglers will be mailed a short survey about

their fishing trips. If you receive a survey, please respond and return it ASAP, even if you did not fish that month.

- FWC biologists conduct in-person interviews at offshore access points, such as boat ramps and marinas, to collect information on the numbers and types of fish caught during recreational trips.

This information helps improve recreational catch estimates, allow for improved reef fish stock assessments, and provide enhanced management opportunities. Better, more precise data will provide a clearer picture of the health of reef fish stocks throughout the state and help ensure the long-term sustainability of recreational fishing in Florida. Your participation is crucial to the success of these efforts!

Visit [MyFWC.com/SRFS](http://MyFWC.com/SRFS) to learn more.



**FROM SHIP TO SHORE AND EVERYWHERE IN BETWEEN.**

THE NEW HAVALON® TALON™ QUIK-CHANGE II™ MULTI-BLADE CUTLERY SYSTEM BRINGS TOGETHER NEARLY 40 YEARS OF EXPERTISE IN THE SURGICAL FIELD AND DECADES OF QUALITY TIME SPENT OUT IN OPEN WATERS.

THIS INNOVATIVE PLATFORM FEATURES A VARIETY OF RELIABLE ADD-ON BLADES DESIGNED TO MAKE CLEAN WORK OF THE DIRTY WORK ALL THE WAY FROM SHIP TO SHORE.

**TALON** BY **HAVALON** KNIVES



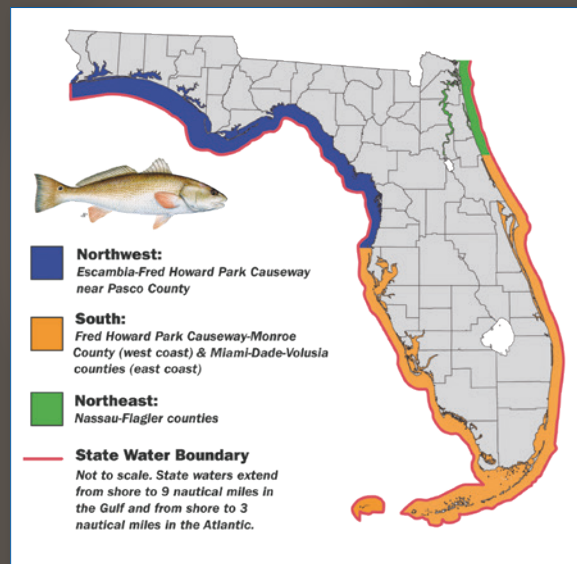
# Know Your Management Zones

For most species, Florida's recreational bag limits apply to all state waters off Florida, which extend out to 3 nautical miles on the Atlantic and out to 9 nautical miles on the Gulf. The following maps provide information regarding two species that have specific management zones where bag limits or rules vary by region. Great barracuda (map not included) also has a new bag limit of two fish per person and six per vessel that applies within all state and federal waters off Collier, Monroe, Miami-Dade, Broward, Palm Beach and Martin counties. Barracuda is not specifically regulated in other areas.

See the link below for management zones on gag grouper, hogfish, snook, permit and weakfish. [MyFWC.com/Fishing/Saltwater/Recreational/Maps](http://MyFWC.com/Fishing/Saltwater/Recreational/Maps)

## Red Drum Management Zones

For red drum, there are three management zones. The daily bag limit is one fish in the northwest and south zones and two fish in the northeast zone.



# Find FWC Fishing Regulations on Fish Rules App

Looking to keep up-to-date on Florida's saltwater fishing regulations? Find them on Fish Rules App. The Florida Fish and Wildlife Conservation Commission (FWC) is excited to announce it is now partnering with Fish Rules App. In addition, a new freshwater version of the app is being created and is anticipated to be rolled out later this summer.

"FWC staff and law enforcement have been using this tool for years now due to its excellence in keeping Florida anglers up-to-date on the latest in saltwater fishing regulations," said Jessica McCawley, FWC's Director for the Division of Marine Fisheries Management. "We are thrilled to be able to now support and promote this amazing app to Florida saltwater anglers and expand it to our freshwater anglers, too."

"We thank Fish Rules App for expanding to make a freshwater version. Our partnership with Fish Rules will strengthen the communication of fishing regulations with our anglers," said Jon Fury, FWC's Director for the Division of Freshwater Fisheries Management. "We look forward to sharing the new version of Fish Rules App with our 1.4 million anglers and encourage them to use the app whenever they are fishing one of Florida's extraordinary waterbodies."

"Partnering with FWC means we can more easily communicate fishery regulations with anglers," said app co-creator Albrey Arrington. "This partnership increases anglers' confidence when they are on the water that they have a reliable guide to fishing regulations."

Fishing regulations change depending on your location. Enable location services in Fish Rules App, and the app will automatically show you regulations for your actual location. The app is also partnering with the South Atlantic Fishery Management Council and the Gulf of Mexico Fishery Management Council who manage fisheries off Florida in federal waters.

Unsure of what species you've caught? The app also helps with fish identification. Swipe left or right on pictures of fish to see more pictures and clues on how to id a fish. You can even sort fish by name or by picture.

Have amazing fish photos? Fish Rules is always looking for more photos to add to the app



and will need freshwater shots as well. Share your amazing shots by emailing them to [photo@fishrulesapp.com](mailto:photo@fishrulesapp.com). Preferred shots include the fish being held horizontally and taking up as much of the image as possible.

Learn more at <http://www.fishrulesapp.com> or follow Fish Rules at [Instagram.com/FishRulesApp](https://www.instagram.com/FishRulesApp) or [Facebook.com/FishRulesApp](https://www.facebook.com/FishRulesApp). Download Fish Rules App by visiting the App Store or the Google Play Store on your smart device.

### Join FWC on Fish Rules

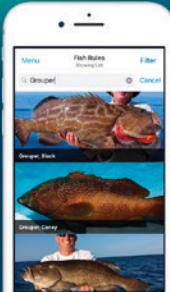


Download the app today  
Find regulations based on your fishing location  
ID your catch  
Freshwater app coming soon

Google Play      App Store

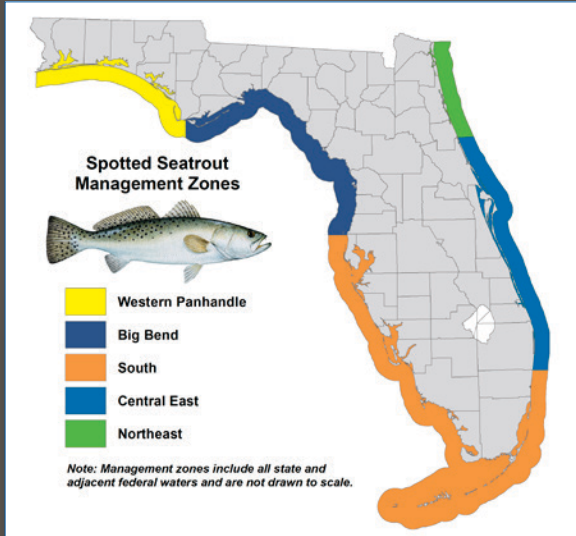
Saltwater fishing regulations made easy.





## Spotted Seatrout Management Zones

Spotted seatrout has five management zones and the recreational bag limit is three fish in the western panhandle region, five fish in the big bend region, three fish in the the south region, two fish in the central east region and five fish in the northeast region.

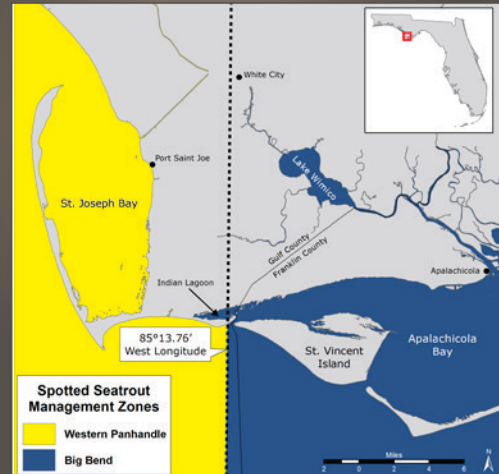


## Seatrout Boundaries



Creating two new zones by splitting the Northwest spotted seatrout management zone into the: (See maps below.)

- Western Panhandle (Escambia County through the portions of Gulf County west of longitude 85 degrees, 13.76 minutes but NOT including Indian Pass/Indian Lagoon).
- Big Bend (remaining portion of Gulf County plus Indian Lagoon, and Franklin County through Fred Howard Park Causeway in Pinellas County).



## Mike's Marine Supply

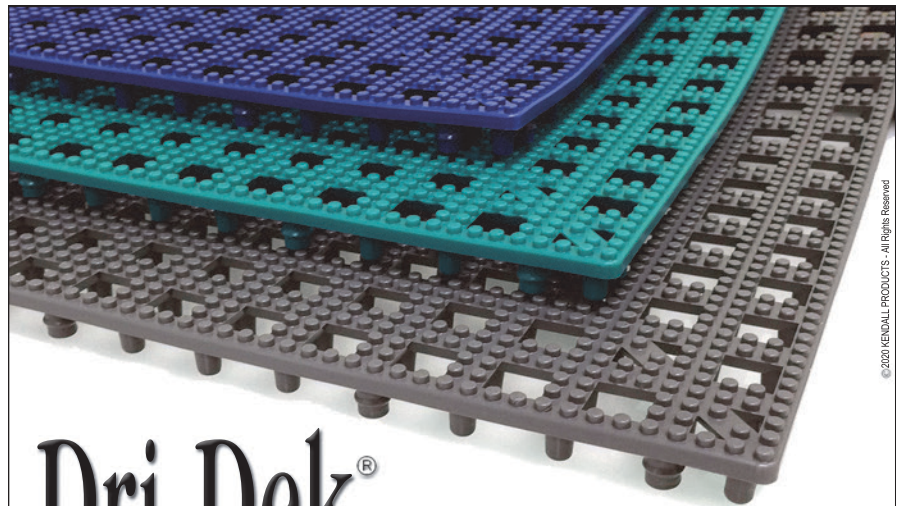
Whether you like to fish or the comforts of riding, Mike's Marine Supply has the boats to fit your needs.

- **Boats & Motors**
- **Factory Promotions**
- **Service & Parts**



850-984-5637 or 850-984-5693  
1296 Coastal Highway  
Panacea, FL  
[www.mikesmarineflorida.com](http://www.mikesmarineflorida.com)

**STORE HOURS**  
Mon-Tue: 8:00-5:00 Wed: 8:00-1:00  
Thu-Sat: 8:00-5:00  
Closed Sundays



# Dri-Dek®

Protects Your Boat. Keeps Equipment Dry.



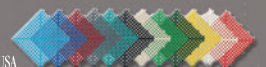
The tough, flexible Dri-Dek 1' x 1' tiles just snap together and trim to fit any area. Line your lockers, under the cushions or on the deck. Dri-Dek's patented self-draining surface shields from impact and moisture.

Visit [dri-dek.com](http://dri-dek.com) today or Call 800-348-2398

Kendall Products - Since 1977 P.O.B. 8656 Naples, FL 34101

Free Samples!

Made in the USA







# Florida Recreational Saltwater Fishing Regulations

Regulations apply to state waters of the Gulf and Atlantic

Issued: July 2020

New regulations are highlighted in red  
(please visit: [MyFWC.com/Fishing/Saltwater/Recreational](http://MyFWC.com/Fishing/Saltwater/Recreational)  
for the most current regulations)

All art: © Diane Rome Peebles, except snowy grouper (Duane Raver)

## Reef Fish

### Snapper

#### General Snapper Regulations:

- Snapper Aggregate Bag Limit - Within state waters of the Atlantic and Gulf, all species of snapper are included in a 10 fish per harvester per day aggregate bag limit in any combination of snapper species, unless stated otherwise.
- Seasons - If no seasonal information is provided, the species is open year-round.



#### Snapper, Cubera ▲◆◆●

##### Minimum Size Limits:

- Atlantic and Gulf - 12" (see below)

##### Daily Recreational Bag Limit:

- Atlantic and Gulf - 10 per harvester under 30", included within snapper aggregate bag limit
- May additionally harvest up to 2 over 30" per harvester or vessel-whichever is less-, and these 2 fish over 30" are **not** included within snapper aggregate bag limit



#### Snapper, Red ▲◆●●X

##### Minimum Size Limits:

- Atlantic - 20"
- Gulf - 16"

##### Season:

- Atlantic - Open year-round
- **Gulf - Open June 11-July 25**

##### Daily Recreational Bag Limit:

- Atlantic and Gulf - 2 per harvester
- Gulf - Zero daily bag and possession limit for captain and crew on for-hire vessels.



#### Snapper, Vermilion ▲◆●●X

##### Minimum Size Limits:

- Atlantic - 12"
- Gulf - 10"

##### Daily Recreational Bag Limit:

- Atlantic - 5 per harvester **not** included within snapper aggregate bag limit
- Gulf - 10 per harvester **not** included within snapper aggregate bag limit



#### Snapper, Lane ▲◆◆●

##### Minimum Size Limits:

- Atlantic and Gulf - 8"

##### Daily Recreational Bag Limit:

- Atlantic - 10 per harvester
- Gulf - 100 pounds per harvester, **not** included within snapper aggregate bag limit

#### Other Snapper ▲◆◆●

##### Minimum Size Limits:

- Dog and Mahogany: Atlantic and Gulf - 12"
- No minimum size limit for other snappers

##### Daily Recreational Bag Limit:

- Atlantic and Gulf - 10 per harvester



#### Snapper, Gray (Mangrove) ▲◆◆●

##### Minimum Size Limits:

- Atlantic and Gulf - 10"

##### Daily Recreational Bag Limit:

- Atlantic and Gulf - 5 per harvester



#### Snapper, Mutton ▲◆◆●X

##### Minimum Size Limits:

- Atlantic and Gulf - 18"

##### Daily Recreational Bag Limit:

- Atlantic and Gulf - 5 per harvester



#### Snapper, Schoolmaster ▲◆◆●

##### Minimum Size Limits:

- Atlantic and Gulf - 10"

##### Daily Recreational Bag Limit:

- Atlantic and Gulf - 10 per harvester



#### Snapper, Yellowtail ▲●●X

##### Minimum Size Limits:

- Atlantic and Gulf - 12" fork length

##### Daily Recreational Bag Limit:

- Atlantic and Gulf - 10 per harvester

### Grouper

#### Atlantic Grouper

##### General Regulations:

- Atlantic grouper regulations apply to all state waters of the Atlantic and all state waters off Monroe County (Gulf and Atlantic sides).
- **Atlantic Grouper Aggregate Bag Limit - all species of grouper plus golden tilefish in the Atlantic are included in a 3 fish per harvester per day aggregate bag limit in any combination of grouper/golden tilefish species.**
- Seasons - If no seasonal information is provided, the species is open year-round.

#### Gulf Grouper

##### General Regulations:

- Gulf grouper regulations apply to all state waters of the Gulf except off Monroe County (where Atlantic rules apply).
- **Gulf Grouper Aggregate Bag Limit - all species of grouper in the Gulf are included in a 4 fish per harvester per day aggregate bag limit in any combination of grouper species.**
- Seasons - If no seasonal information is provided, the species is open year-round.



#### Grouper, Black ▲◆●●X

##### Minimum Size Limits:

- Atlantic - 24"
- Gulf - 24"

##### Season:

- Atlantic - Closed Jan. 1-April 30
- Gulf - Open year-round

##### Daily Recreational Bag Limit:

- Atlantic - 1 per harvester. Only 1 fish can be gag or black
- Gulf - 4 per harvester\*



#### Grouper, Scamp ▲◆◆●

##### Minimum Size Limits:

- Atlantic - 20"
- Gulf - 16"

##### Season:

- Atlantic - Closed Jan. 1-April 30
- Gulf - Open year-round

##### Daily Recreational Bag Limit:

- Atlantic - 3 per harvester
- Gulf - 4 per harvester



#### Grouper, Snowy ▲◆◆●

##### Minimum Size Limit:

- Atlantic and Gulf - None

##### Daily Recreational Bag Limit:

- Atlantic - 1 per harvester
- Gulf - 4 per harvester



#### Grouper, Red ▲◆●●X

##### Minimum Size Limits:

- Atlantic and Gulf - 20"

##### Season:

- Atlantic - Closed Jan. 1-April 30
- Gulf - Open year-round

##### Daily Recreational Bag Limit:

- Atlantic - 3 per harvester
- Gulf - 2 per Harvester\*



#### Grouper, Yellowfin & Yellowmouth ▲◆◆●

##### Minimum Size Limits:

- Atlantic and Gulf - 20"

##### Season:

- Atlantic - Closed Jan. 1-April 30
- Gulf - Open year-round

##### Daily Recreational Bag Limit:

- Atlantic - 3 per harvester
- Gulf - 4 per harvester



#### Grouper, Warsaw & Speckled Hind ▲◆◆●

##### Minimum Size Limits:

- Atlantic and Gulf - None

##### Daily Recreational Bag Limit:

- Atlantic and Gulf - 1 per vessel per day of each species



#### Gag Grouper ▲◆◆●X

##### Minimum Size Limits:

- Atlantic - 24"
- Gulf - 24"

##### Season:

- Atlantic - Closed: Jan. 1-April 30
- Gulf - State waters off Franklin, Wakulla, Jefferson and Taylor counties: Open April 1 -June 30, & Sept 1-Dec. 31.
- Gulf - State waters off all other counties: Open June 1-Dec. 31

##### Daily Recreational Bag Limit:

- Atlantic - 1 per harvester. Only 1 fish can be gag or black
- Gulf - 2 per harvester\*

#### Other Grouper ▲◆◆●

##### Other Grouper includes:

- Rock Hind, Red Hind, Coney and Graysby

##### Minimum Size Limit:

- Atlantic and Gulf - None

##### Season:

- Atlantic - Closed Jan. 1-April 30
- Gulf - Open year-round

##### Daily Recreational Bag Limit:

- Aggregate bag limits apply

\* Zero bag limit for captain and crew of for-hire vessels applies to gag, black, and red grouper only.



## Reef Fish

### Other Reef Fish (If no season information is provided, the species is open year-round)



**Amberjack, Greater** ▲●X

**Minimum Size Limits:**

- Atlantic - 28" fork length
- Gulf - 34" fork length

**Season:**

- Atlantic - Open year-round
- Gulf - Open May 1-May 31, Aug. 1-Oct. 31

**Daily Recreational Bag Limit:**

- Atlantic and Gulf - 1 per harvester



**Great Barracuda** ■

Regulations only apply in Collier, Monroe, Miami-Dade, Broward, Palm Beach, and Martin counties.

**Minimum Size Limits:**

- Not less than 15" or more than 36"

**Daily Recreational Bag Limit:**

- 2 per person or 6 per vessel
- May possess one over 36" per vessel.
- Unregulated in all other areas.



**Hogfish** ▲●X

Atlantic regulations apply to Monroe county

**Minimum Size Limits:**

- Atlantic - 16" fork length
- Gulf - 14" fork length

**Season:**

- Atlantic - Open May 1-Oct. 31
- Gulf - Open year round

**Daily Recreational Bag Limit:**

- Atlantic - 1 per harvester
- Gulf - 5 per harvester



**Triggerfish (Gray)** ▲●X

**Minimum Size Limits:**

- Atlantic - 12" fork length
- Gulf - 15" fork length

**Season:**

- Atlantic - Open year-round
- **Gulf - Open March 1-May 1**

**Daily Recreational Bag Limit:**

- Atlantic - 10 per harvester
- Gulf - 1 per harvester



**Red Porgy** ▲◆◆

**Minimum Size Limits:**

- Atlantic - 14"
- Gulf - None

**Daily Recreational Bag Limit:**

- Atlantic - 3 per harvester
- Gulf - 100 pounds



**Tilefish, Golden** ▲●

**Daily Recreational Bag Limit:**

- Atlantic - 1 per harvester
- Gulf - 100 pounds or 2 per person, whichever is greater

**Remarks**

- Golden tilefish included within Atlantic Grouper aggregate bag limits



**Amberjack, Lesser & Banded Rudderfish** ▲●X

**Minimum Size Limits:**

- Atlantic and Gulf - Cannot be less than 14" or greater than 22" fork length

**Daily Recreational Bag Limit:**

- Atlantic and Gulf - 5 per person aggregate of the two species



**Black Sea Bass** ▲◆◆

**Minimum Size Limits:**

- Atlantic - 13"
- Gulf - 10"

**Daily Recreational Bag Limit:**

- Atlantic - 7 per harvester
- Gulf - 100 pounds per harvester

## Pelagics



**Billfish** ▲★

**Minimum Size Limits:**

- Sailfin 63";
- Blue Marlin 99";
- White Marlin 66";
- Roundscale Spearfish 66"

**Daily Recreational Bag Limit:**

- 1 per harvester aggregate bag limit

**Remarks**

- Measured tip of lower jaw to fork. All landed fish must be reported to NOAA within 24 hours 800-894-5528 or [hmspermits.noaa.gov](http://hmspermits.noaa.gov).
- HMS permit required in federal waters.



**Blackfin Tuna** ▲■

**Minimum Size Limits:**

- **No minimum size limit**

**Daily Recreational Bag Limit:**

- **2 fish per person or 10 fish per vessel per day, whichever is greater.**



**Mackerel, King** ▲

**Minimum Size Limits:**

- 24" fork length

**Daily Recreational Bag Limit:**

- Atlantic (excluding Monroe) - 2 per harvester
- Gulf (including Monroe) - 3 per harvester

**Remarks**

- Bag limit reduced to 1 in some state waters if federal waters are closed to recreational harvest.



**Mackerel, Spanish** ▲

**Minimum Size Limits:**

- 12" fork length

**Daily Recreational Bag Limit:**

- 15 per harvester



**Swordfish** ★

**Minimum Size Limits:**

- 47" lower jaw fork length with head attached or 25" cleithrum to keel length if head removed

**Daily Recreational Bag Limit:**

- 1 per harvester per day, not to exceed a maximum of 4 per recreational (not for-hire) vessel or 15 per for-hire vessel

**Remarks**

- All landed fish must be reported to NOAA within 24 hours 800-894-5528. HMS permit required in federal waters. Zero daily bag and possession limit for captain and crew of for-hire vessels.



**Wahoo** ▲

**Minimum Size Limits:**

- None

**Daily Recreational Bag Limit:**

- 2 per harvester



**Cobia (Ling)** ▲

**Minimum Size Limits:**

- 33" fork length

**Daily Recreational Bag Limit:**

- Atlantic - 1 per harvester not to exceed 6 per vessel
- Gulf - 1 per harvester, not to exceed 2 per vessel



**Tripletail** ▲★◆■

**Minimum Size Limits:**

- 18"

**Daily Recreational Bag Limit:**

- 2 per harvester

**Remarks**

- Hook and line only. No snatch hooks.



**Dolphinfish** ▲

**Minimum Size Limits:**

- Atlantic - 20" fork length
- Gulf - None

**Daily Recreational Bag Limit:**

- 10 per harvester per day, not to exceed 60 per vessel per day. Vessel limit does not apply to for-hire vessels.



Scan this code with your mobile device to view the regulations online.

Buy your license online at [GoOutdoorsFlorida.com](http://GoOutdoorsFlorida.com) or toll free at: 1-888-347-4356

Report fish and wildlife law violations toll free at: 1-888-404-3922



# Coastal Species



## Bluefish ▲ ■

- Minimum Size Limits:**
- 12" fork length
- Daily Recreational Bag Limit:**
- 10 per harvester
- Remarks**
- **Changes coming**



## Permit ● ▲ ★ † ■

- Size Limits:**
- 22" fork Special Permit Zone (SPZ); Not less than 11" or more than 22" fork length all other areas
- Closed Season:**
- April 1–July 31 SPZ Only
- Daily Recreational Bag Limit:**
- 1 per harvester, not to exceed 2 per vessel SPZ;
  - 2 per harvester all other state waters

- Remarks**
- May possess 1 over 22" fork length outside the SPZ, not to exceed 2 over 22" fork per vessel per day. For map of SPZ, please see: MyFWC.com.
  - Zero daily bag and possession limit for captain and crew on for-hire vessels



## Black Drum ▲ ◆ † ■

- Size Limits:**
- Not less than 14" or more than 24"
- Daily Recreational Bag Limit:**
- 5 per harvester
- Remarks**
- May possess one over 24". Snatching prohibited.



## Flounder ▲ ◆ †

- Minimum Size Limits:**
- 12"
- Daily Recreational Bag Limit:**
- 10 per harvester
- Remarks**
- May be harvested by spearing. Snatching prohibited.



## Spotted Seatrout ● ★ ▲ ◆ † ■

- Size Limits:**
- **Not less than 15" or more than 19"**
  - **May not possess more than 1 over 19" per vessel**
- Daily Recreational Bag Limit:**
- **3 per harvester per day W.P. Zone**
  - **5 per harvester per day B.B. Zone**
  - **3 per harvester per day S. Zone**
  - **2 per harvester per day C.E. Zone**
  - **5 per harvester per day N.E. Zone**
- Closed Season:**
- **Feb. W.P. Zone**
  - **Nov. - Dec. C.E. Zone**

- Remarks**
- **See management zone map on pg. 7.**
  - **Zero bag limit for captain and crew of for-hire vessels**
  - **For current regulations see MyFWC.com**
  - **Remains Catch-and-release only in Pasco-Gordon Pass/Collier counties.**



## Pompano, Florida ▲ ★ † ■

- Minimum Size Limits:**
- 11" fork length
- Daily Recreational Bag Limit:**
- 6 per harvester
- Remarks**
- Hook and line, cast net and beach or haul seine ONLY.



## Bonefish ★ ■

- Daily Recreational Bag Limit:**
- 0 per harvester
- Remarks**
- Catch and release only
  - Hook and line only



## Weakfish ▲ ★ ◆

- Minimum Size Limits:**
- Weakfish Management Area (WMA) in Nassau County - 12"
  - All other areas - no minimum
- Daily Recreational Bag Limit:**
- WMA - 1 per harvester
  - All other areas - 100 pounds per harvester
- Remarks**
- Regulations apply in parts of Nassau County only.
  - See map at: MyFWC.com/Fishing/Saltwater/Recreational/Weakfish



## Mullet, Striped (Black) & Silver

- Minimum Size Limits:**
- No minimum size
- Daily Recreational Bag Limit:**
- 50 aggregate per harvester;
  - **Aggregate vessel limits**  
Feb. 1–Aug. 31: 100 per vessel;  
Sept. 1–Jan. 31: 50 per vessel



## Pompano, African ● ★ ▲ † ■

- Minimum Size Limits:**
- 24" fork length
- Daily Recreational Bag Limit:**
- 2 per harvester per day, not to exceed 2 per vessel



## Snook (All species) ▲ ★ ◆ † ■

- Size Limits:**
- Not less than 28" or more than 32" Atlantic excluding Monroe
  - Not less than 28" or more than 33" Gulf and Monroe County
- Closed Season:**
- Atlantic (excluding Monroe) closed Dec. 15–Jan. 31 and June 1–Aug. 31.
  - Gulf including Monroe County, Dec. 1–end of February, and May 1–Aug. 31.
- Daily Recreational Bag Limit:**
- 1 per harvester

- Remarks**
- Snook permit required for harvest when saltwater license required. See MyFWC.com for snook permit details. Snatch hooks and spearing prohibited.
  - Zero daily bag and possession limit for captain and crew on for-hire vessels
  - **Remains Catch-and-release only in Pasco-Gordon Pass/Collier counties**



## Blue Runner ■

- Minimum Size Limits:**
- No minimum
- Daily Recreational Bag Limit:**
- 100 fish per harvester



## Sheepshead ● ▲ ◆ † ■

- Minimum Size Limits:**
- 12"
- Daily Recreational Bag Limit:**
- 8 per harvester
- Remarks**
- Snatching prohibited
  - Vessel limit of 50 fish during March and April



## Tarpon ● ★ † ■

- Recreational Bag Limit:**
- 1 per harvester per year. \$50 harvest tag required. Vessel limit of one fish. Harvest tag can only be used when fish is retained for potential IGFA record.
- Remarks**
- Tarpon over 40 inches must remain in the water during release. Spearing and snatch hooking prohibited. Bottom weighted jigs prohibited in Boca Grande Pass. See: MyFWC.com/Fishing/Saltwater/Recreational/Tarpon for additional information.



## Red Drum (Redfish) ▲ ★ ◆ †

- Size Limits:**
- Not less than 18" or more than 27"
- Daily Recreational Bag Limit:**
- 2 per harvester per day in the NE zone, and 1 per harvester in the NW and S zone. See map on p. 6
  - Off the water possession limit of 6 fish
- Remarks**
- Giggling, spearing, snatching prohibited. Harvest in Federal waters prohibited.
  - **Remains Catch-and-release only in Pasco-Gordon Pass/Collier counties**

## Can't find your fish in the regulations?

Florida's coastal waters are home to thousands of marine species, and the majority of these species have no specific regulations with regard to bag limits, size limits, gear restrictions or closed seasons. These species are often referred to as "unregulated species," although the name can be a bit misleading. State law provides that for any marine species that does not have specific regulations, harvesting more than 100 pounds or two fish (whichever is the greater amount) constitutes a commercial quantity and requires a commercial license. This means the recreational harvest limit for any unregulated species is 100 pounds or two organisms if the combined weight of the two organisms exceeds 100 pounds.



**Examples of "unregulated species" include:** Ladyfish, bonito, menhaden, white grunt, southern stingray, gulf kingfish (whiting), pinfish, Atlantic croaker, jack crevalle, cero mackerel, hardhead catfish, gafftopsail catfish, lionfish.

\* No license is required to harvest lionfish by dipnet, pole spear or Hawaiian sling and lionfish bag limit is unlimited for both Gulf and Atlantic state waters.

- ★ Spearing Prohibited
- ▲ Must remain in whole condition (removal of gills and guts allowed).
- ◆ Measured as total length. Total length is the straight line distance from the most forward part of the head with the mouth closed to the farthest tip of the tail with the tail compressed or squeezed together while the fish is lying on its side.
- State regulations apply in federal waters.
- Additional gear rules apply, please see: MyFWC.com
- † Harvest prohibited by or with the use of any multiple hook (any hook with two or more points and a common shaft) in conjunction with live or dead natural bait.
- ✗ State Reef Fish Angler designation required when fishing for select reef fish species from a private vessel in the Gulf of Mexico or Atlantic Ocean.



## Crustaceans and Mollusks

### Bay Scallops



#### Season:

- Gulf County: Aug. 16–Sept. 24
- Franklin-NW Taylor County: July 1–Sept. 24, 2020
- Dixie and remaining Taylor County: June 15–Labor Day
- Levy, Citrus and Hernando counties: July 1–Sept. 24
- Pasco County: 10 days starting on 3rd Friday in July

#### Daily Recreational Bag Limit:

- 2 gallons whole or 1 pint meat per harvester; no more than 10 gallons whole, or ½ gallon meat per vessel anytime
- Dixie and remaining Taylor County: From June 15–30, one gallon whole/one cup meat per person or five gallons whole/two pints meat per vessel, whichever is less

#### Remarks

- Harvest allowed only in state waters of the Gulf of Mexico from the Pinellas - Pasco county line, to the west bank of the Mexico Beach Canal in Bay County. Direct transit through closed areas permitted.

### Shrimp



#### Closed Season:

- April & May closed in Nassau, Duval, St. Johns, Putnam, Flagler & Clay counties

#### Daily Recreational Bag Limit:

- 5 gallons heads on per harvester or vessel, whichever is less

#### Remarks

- Visit: [MyFWC.com/Fishing](http://MyFWC.com/Fishing) and select "Saltwater", "Regulations" and "Shrimp" for additional regulations specific to Dade, Nassau and Duval

### Spiny Lobster



#### Minimum Size Limit:

- Carapace must be greater than 3" measured in the water

#### Seasons:

- Sport Season open July 29–30, 2020
- Regular Season opens Aug. 6 through March 31

#### Daily Recreational Bag Limit:

- Sport Season: 6 per harvester per day in Monroe County and Biscayne National Park, 12 in all other harvest areas.
- Regular Season: 6 per harvester in all areas

#### Remarks

- Recreational trapping prohibited. Spiny lobster permit required when license required. Harvest of egg-bearing females prohibited.

### Clams (Hard)



#### Minimum Size Limits:

- 1" thick across hinge

#### Daily Recreational Bag Limit:

- One 5 gal. bucket per harvester or 2 per vessel (whole in shell)

#### Remarks

- Illegal to harvest from closed areas.
- Go to [www.FloridaAquaculture.com](http://www.FloridaAquaculture.com) for allowable harvesting areas.
- May not harvest half hour after official sunset until half hour before official sunrise.

### Crab, Stone



#### Minimum Size Limits:

- 3" claw

#### Closed Season:

- May 16–Oct. 14

#### Daily Recreational Bag Limit:

- 1 gal. claws per harvester or 2 gal. per vessel, whichever is less

#### Remarks

- 5 traps maximum. Visit [MyFWC.com](http://MyFWC.com) for statewide trap construction requirements and specific requirements that apply in Miami-Dade, Monroe and Collier. Illegal to possess whole crab. Harvest of egg-bearing crabs prohibited. See how to properly de-claw on our website. **New trap registration requirements, visit [GoOutdoorsFlorida.com](http://GoOutdoorsFlorida.com) to register.**
- **Changes coming Oct. 2020**

### Crab, Blue



#### Closed Season:

- Regional trap closures apply. See map on page 6 or visit [MyFWC.com](http://MyFWC.com) for 2020 trap closure dates and locations.

#### Daily Recreational Bag Limit:

- 10 gallons whole per harvester

#### Remarks

- 5 traps maximum. Trap requirements apply. Harvest of egg-bearing crabs prohibited. **New trap registration requirements, visit [GoOutdoorsFlorida.com](http://GoOutdoorsFlorida.com) to register.**

### Oysters



#### Minimum Size Limit:

- 3"

#### Closed Season:

- June, July, Aug. in Dixie, Wakulla, Levy counties.
- July, Aug., Sept. in all other areas except Apalachicola Bay which has open areas year-round.

#### Daily Recreational Bag Limit:

- 2 bags per harvester or vessel except Apalachicola Bay

#### Remarks

- **Apalachicola Bay: special bag limits and other harvest restrictions apply. See [MyFWC.com](http://MyFWC.com) for detailed information.**
- Apalachicola Bay has summer & winter seasons/areas.
- Harvest from approved shellfish areas during daylight hours only.
- Go to [FloridaAquaculture.com](http://FloridaAquaculture.com) to determine the Open or Closed status of shellfish harvesting areas.
- May not harvest half hour after official sunset until half hour before official sunrise.
- 1 Bag = 60 lbs. or two 5 gal. buckets (whole in shell)
- Harvest prohibited in any harvest area that is in the Closed status as determined by the Florida Department of Agriculture and Consumer Services.
- Bay County: Harvest and possession prohibited in West Bay Estuarine Habitat Restoration Project Zone
- **Changes coming**

## Sharks

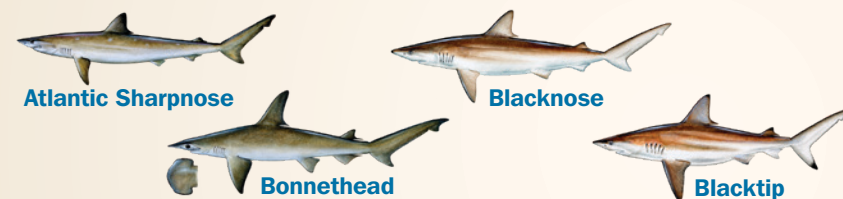
### Retainable Sharks with a 54" fork length minimum ▲ ★ †

Blue, oceanic whitetip, porbeagle (not illustrated).



### Retainable Sharks with no minimum size limit ▲ ★ †

Finetooth, Smooth Dogfish, Florida Smoothhounds (not illustrated).



### Retainable Sharks with a 83" fork length minimum ▲ ★ †



#### Daily Recreational Bag Limit:

- 1 per harvester or 2 per vessel per day, whichever is less.

#### Remarks

- The retainable sharks are managed as a group for bag limit purposes. In other words, you can only harvest one shark per day and the shark that you harvest must be one of the retainable species.
- Hook-and-line gear only.
- **Shore-based Shark Fishing educational course and permit required.**
- See list of prohibited species below.

## Prohibited Species

It is unlawful to harvest, possess, land, purchase, sell or exchange the following species:

Goliath Grouper (Jewfish), Nassau Grouper, Sawfish, Atlantic Angel Shark, Basking Shark, Bigeye Sand Tiger Shark, Bigeye Sixgill Shark, Bigeye Thresher Shark, Bignose Shark, Caribbean Reef Shark, Caribbean Sharpnose Shark, Dusky Shark, Galapagos Shark, Lemon Shark, Longfin Mako Shark, Narrowtooth Shark, Night Shark, Silky Shark, Sand Tiger Shark, Sandbar Shark, Sevengill Shark, Sixgill Shark, Smalltail Shark, Spiny Dogfish, Whale Shark, White Shark, Tiger Shark, Greater, Scalloped and Smooth Hammerhead Shark, Manta Ray, Devil Ray, Spotted Eagle Ray, Longbill Spearfish, Mediterranean Spearfish, Sturgeon, Queen Conch, Calico Scallop, Stony, Hard, Black and Fire Corals, Sea Fans, Bahama Starfish, and Longspine Urchin. Harvest of live rock in state waters is prohibited. Puffer fish harvest is prohibited in Volusia, Brevard, Indian River, St. Lucie and Martin counties.



## Marine life regulations

### Requirements for marine life (aquarium species) harvest:

- Recreational saltwater fishing license
- Organisms must be landed and kept alive
- A continuously circulating live well, aeration or oxygenation system of adequate size to maintain these organisms in a healthy condition
- **Allowable Gear:** hand-held net, drop net, rod, barrier net, slurp gun (use of quinaldine is prohibited)\*
- **Bag Limit:** 20 organisms per person per day; only 5 of any one species allowed within the 20-organism bag limit
- **Possession Limit:** 2-day possession limit, 40 total organisms, no more than 10 of any one species allowed
- **Allowable substrate:** see species specifications in table
- **Closed areas:** Some closed areas exist\*\*
- Sale of recreationally caught marine life organisms is prohibited
- Regulations also apply in federal waters

\* Some organisms have additional gear limitations, see chart.

\*\* Various closed areas exist. See regulations for Florida Keys National Marine Sanctuary, Everglades National Park, Biscayne National Park and Florida's State Parks before collecting in these areas.

Additional rules apply to the collection of shells containing live organisms in Lee or Manatee counties.

### Marine Life — Fish

SPECIES	REMARKS <sup>1</sup>	SIZE LIMITS (total length unless otherwise noted)
Angelfish	No more than 5 per person per day in any combination	Gray, French Angelfish: 1½–8" slot limit Blue, Queen Angelfish: 1¾–8" slot limit Rock Beauty: 2–5" slot limit
Butterflyfish		1–4" slot limit
Filefish/Triggerfish	Except Unicorn Filefish, Gray Triggerfish and Ocean Triggerfish	
Gobies		Maximum size limit: 2"
Hamlets/Seabasses	Except reef fish <sup>2</sup> and Longtail Bass	
Jawfish		Maximum size limit: 4"
Parrotfish		Maximum size limit: 12"
Porkfish		Minimum size limit: 1½"
Pufferfish, Burrfish, Balloonfish, Porcupinefish	Includes Sharpnose Pufferfish, Striped Burrfish, Spotted Burrfish, Balloonfish, Porcupinefish	
Tangs and Surgeonfish		Maximum size limit (fork length): 9"
Wrasse/Hogfish/Razorfish	Except Hogfish Snapper	Spanish Hogfish: 2–8" slot limit Cuban Hogfish: 3–8" slot limit

Other Marine Life fish include<sup>1</sup>: Basslets, Batfish, Blackbar Soldierfish, Blennies, Brotulas (Black and Key), Cardinalfish, Clingfish, Cometfish, Damselfish, Eels (Moray and Snake), Frogfish, Hawkfish, High-hat/Jackknife-fish/Spotted Drum/Cubbyu, Pipefish, Reef Croakers, Seahorses, Sleepers, Yellow Stingray, Sweepers, Toadfish, Trumpetfish and Trunkfish/Cowfish.

### Marine Life — Invertebrates

SPECIES	REMARKS <sup>1</sup>
Anemones	Corallimorphs and Zoanthids: No more than 5 polyps of each may be landed per person per day, must be harvested with a flexible blade no wider than 2". Corallimorphs must be harvested as single polyps only. Zero bag limit on Giant Anemone ( <i>Condylactis gigantea</i> ).
Conch, Queen	Harvest prohibited
Corals: Hard, stony, fire & black	Harvest prohibited
Octocorals	No more than 6 octocoral colonies per person per day in any combination; harvest of attached substrate within 1" of base is permitted; harvest closes when quota met.
Crab, Hermit	Except Land Hermit Crabs
Crab, Horseshoe	Harvest prohibited
Live Rock	Harvest prohibited
Octopods <sup>3</sup>	Except Common Octopus
Sea Fans	Harvest of Venus Sea Fan and Common (Purple) Sea Fan prohibited
Siphonophores/Hydroids	Harvest of Fire Coral prohibited
Sponges	Except Sheepswool, Yellow, Grass, Glove, Finger, Wire, Reef and Velvet Sponges; no more than 5 sponges per harvester per day in any combination; harvest of substrate within 1" of base permitted north and west of the southernmost point of Egmont Key, no substrate allowed south of Egmont Key
Starfish <sup>3</sup>	Harvest of Bahama Starfish (Cushion Sea Star) prohibited
Urchins <sup>3</sup>	Except Sand Dollars & Sea Biscuits; harvest of Longspine Urchin prohibited

Other Marine Life invertebrates include<sup>1</sup>: Brittlestars<sup>3</sup>, Decorator (Furcate Spider) Crab, False Arrow Crab, Green Clinging (Emerald) Crab, Nimble Spray (Urchin) Crab, Red Mithrax Crab, Red-Ridged Clinging Crab, Spotted Porcelain Crab, Yellowline Arrow Crab, Fileclams<sup>3</sup>, Upside-down Jellyfish, Nudibranchs/Sea Slugs<sup>3</sup>, Sea Cucumbers<sup>3</sup>, Sea Lilies, Cleaner/Peppermint Shrimp, Coral Shrimp, Snapping Shrimp, Nassarius Snails<sup>3</sup>, Starsnails<sup>3</sup>, Featherduster Worms and Calcareous Tube Worms.

### Marine Life — Plants

SPECIES	LIMITS
Algae, Coralline Red	
Caulerpa	One gallon of tropical ornamental marine plants per day in any combination; 2 gallon maximum possession limit
Halimeda/Mermaid's Fan/Mermaid's Shaving Brush	

- 1—Unless otherwise noted, combined bag limit of 20 marine life fish and invertebrates per person per day, only 5 of any one species allowed. A 2-day possession limit also applies (40 total organisms, only 10 of any one species).
- 2—Such as groupers, snappers, seabass and amberjacks. Must abide by regulations for these species on pages 8.
- 3—Bag limit of 2 live shell fish of any single species per harvester per day in Manatee County. Harvest prohibited in Lee County.



**On the Little Manatee River**  
[tampasouthrvresort.com](http://tampasouthrvresort.com)  
 2900 S US Hwy 41  
 Ruskin, FL 33570  
**813-645-1202**



## Catching up with the latest release recommendations

Whether you're fishing for harvest, or just for sport, chances are you're going to need to release a fish. Properly releasing any fish that you do not intend to keep increases the chance of survival to help maintain and improve your Florida fish populations. Check out these tips to give your fish a fighting chance upon release.

### Things to Know:

- Be aware of the area you will be fishing and local fish you might catch.
- Know the regulations for your target species and make sure that you have all the proper gear.
- Determine ahead of time which fish you want to keep. This will help get released fish back in the water quickly.

### Gear to Grab:

- **Circle hooks** — studies have shown that the hook you use is one of the most important factors in release survival. Circle hooks are 90% more likely to hook a fish in the mouth reducing risk of serious injury and getting the fish back in the water faster. Use barbless non-stainless steel circle hooks for an even better release.



## Discover your next epic catch.



Anglers know Martin County by many names: Snook City. Kingfish Kountry. The Sailfish Capital of the World. With over 800 species of fish, this naturally quaint paradise boasts numerous IGFA catch records and a community of world-class competitive anglers. Inshore, offshore, saltwater or fresh—however you cast your line, you'll find an abundance of opportunity.



PLAN YOUR NEXT CAST AT [DiscoverMartin.com](http://DiscoverMartin.com)

- **Dehooking tool** — Allows for a quick release while minimizing injuries and handling time.
- **Correct weight tackle** — Using the right sized lures, hooks and tackle are important to hooking fish properly and reeling them in quickly. Tackle that is too small can be swallowed more easily and is more likely to gut hook. It can also take longer to reel fish in leaving them exhausted and less able to avoid predators upon release.
- **Knotless, rubber-coated net** — These support the weight of the fish while removing a minimal amount of slime and scales, reducing the risk of infection.
- **Gripping devices** can be effective for controlling and handling fish, especially ones with sharp teeth. Grip behind the lower lip and support the weight of the fish in a horizontal position.



Dehooking a spotted seatrout

### Taking Action:

- Make sure to reel the fish in as quickly as possible. Playing the fish too much can result in an exhausted fish that cannot avoid predators once released.
- If the fish has swallowed the hook, **cut the line as close to the hook as possible**. Studies have shown that a key factor in the survival of gut hooked fish was leaving the hook in place. Fish are often able to shed the hook on their own and you can do more damage by attempting to remove the hook.
- If possible, **keep the fish in the water** while removing the hook and taking photos.
- Never hold a fish by the gills or eyes.
- Avoid removing large fish like tarpon and sharks from water.
- **Return the fish to the water as quickly as possible**. One of the major factors in the survival of a released fish is how much time it spends out of the water. The more fish that survive upon release today, then more fish will be available to catch tomorrow.
- **Revive fish** that do not swim away immediately or appear lethargic:
  - » Place fish in the water head first — it is easiest to hold one hand on the bottom lip or tail and one hand under the belly of the fish.
  - » Move the fish forward in the water — this allows the water to flow through the mouth and over the gills. The fish must face the direction of water flow.
  - » Use a figure-8 motion to move the fish forward constantly, ensuring water continues to flow over the gills. Never jerk fish back and forth, since this action prevents water from properly flowing through the gills.
- For fish caught in deep water with signs of barotrauma, **use a descending device to return fish to depth or vent the fish** by inserting a sharpened, hollow tube at a 45-degree angle, one inch behind the base of the pectoral fin.

### Ensure Fish Survive to Help Populations Thrive!

The steps you take on the water today can help positively impact the future of your Florida fish populations! To learn more about proper catch-and-release techniques, visit [MyFWC.com/FishHandling](http://MyFWC.com/FishHandling).





# New Regulations in Biscayne National Park

Starting July 1, 2020, several new regulatory changes aimed at achieving fishery management goals in Biscayne National Park go into effect. As part of the Fishery Management Plan, the FWC and the National Park Service agreed that FWC would develop fishing regulations for the park with the goal of increasing the size and abundance of targeted species by at least 20% within the park.

## New regulations:

### Minimum size limit increases

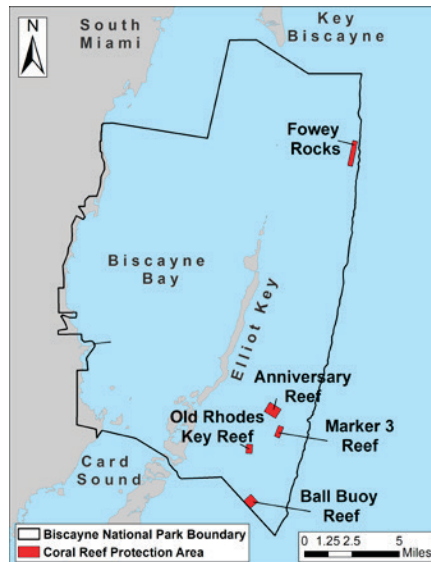
- Purpose: To increase sizes of targeted species within the park by 20%.
- Transit through park allowed while in possession of fish legally caught outside the park that do not meet the new minimum size limits.
- Species include:
  - » Gray (mangrove) snapper: 12" TL (changed from 10")
  - » Lane snapper: 10" TL (changed from 8")
  - » Mutton snapper: 19" TL (changed from 18")
  - » Schoolmaster snapper: 12" TL (changed from 10")
  - » Yellowtail snapper: 14" TL (changed from 12")
  - » Red grouper: 24" TL (changed from 20")
  - » Bluestriped grunt: 10" TL (changed from none)
  - » White grunt: 8" TL (changed from none)
  - » Gray triggerfish: 14" FL (changed from 12")

### Aggregate bag limits

- Purpose: To increase abundances of targeted species by 20%.
- Transit of the species listed here in excess of the 10-fish aggregate bag limit is **NOT allowed** through the park. This does not affect bag limits or transit of species not included in the aggregate.
- 10-fish per person aggregate harvest and possession limit for recreational harvest of select commonly targeted fish including:
  - » Drums — Spotted seatrout, red drum, black drum
  - » Flounder — Gulf, southern, summer, fringed
  - » Grouper — Red, black, rock hind, red hind, coney, graysby
  - » Jacks — Permit, Florida pompano, African pompano, blue runner, greater amberjack, lesser amberjack, banded rudderfish, crevalle jack, yellow jack
  - » Porgies — Sheepshead, jolthead porgy, whitebone porgy, knobbed porgy, sheepshead porgy
  - » Snapper — Gray, lane, mutton, schoolmaster and yellowtail
  - » Triggerfish — Gray and ocean
  - » Other species — Cero mackerel, great barracuda, all grunts, hogfish, ladyfish, silver jenny, snook species, tripletail

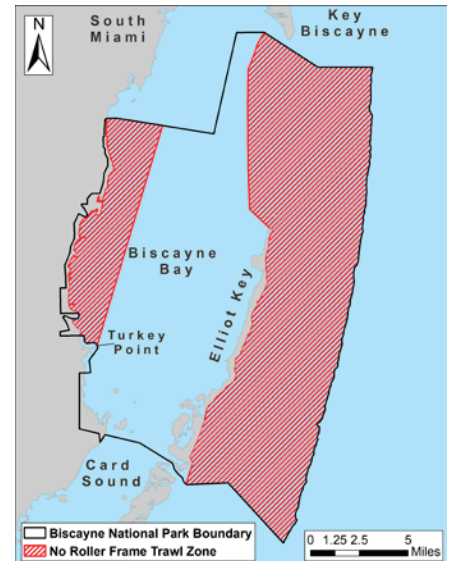
### Coral Reef Protection Areas inside Park

- Purpose: Protect areas of high-quality corals or threatened species of coral
- Traps and lobstering prohibited year-round.
- Anniversary Reef: 25° 23.239' -80° 9.982' (aka Alina's Reef)
- Ball Buoy Reef: 25° 19.056' -80° 11.132'
- Fowey Rocks: 25° 35.019' -80° 5.842'
- Marker 3 Reef: 25° 22.250' -80° 9.671'
- Old Rhodes Key Reef: 25° 21.471' -80° 11.180' (aka Lob120 Reef)



### No trawl zones

- Purpose: Protect hardbottom habitat and reduce bycatch

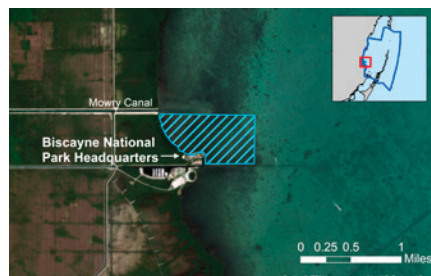


Staff will return in five years to provide an update on monitoring and progress toward management goals and to evaluate the effectiveness and need for the Coral Reef Protection Areas.

For more visit, [MyFWC.com/BNP](http://MyFWC.com/BNP).

### BNP headquarters trap-free zone

- Purpose: Reduce conflicts in high-use area
- No-traps are allowed in the 0.3 square miles near the visitor center at park headquarters.
- Applies to recreational and commercial traps





# SHIMANO

## NEW SIZES 20II & 25II

Built to provide high end performance and dependability in a compact lightweight frame, the Shimano SpeedMaster II Lever Drag Reel is an absolute fish fighting machine. These two-speed lever drag reels feature the same sleek and functional design coupled with unrelenting power that blue water anglers have come to expect from Shimano conventional reels, but now at a price that everyone can appreciate.

Available in 4 sizes, 12II, 16II, 20II and 25II

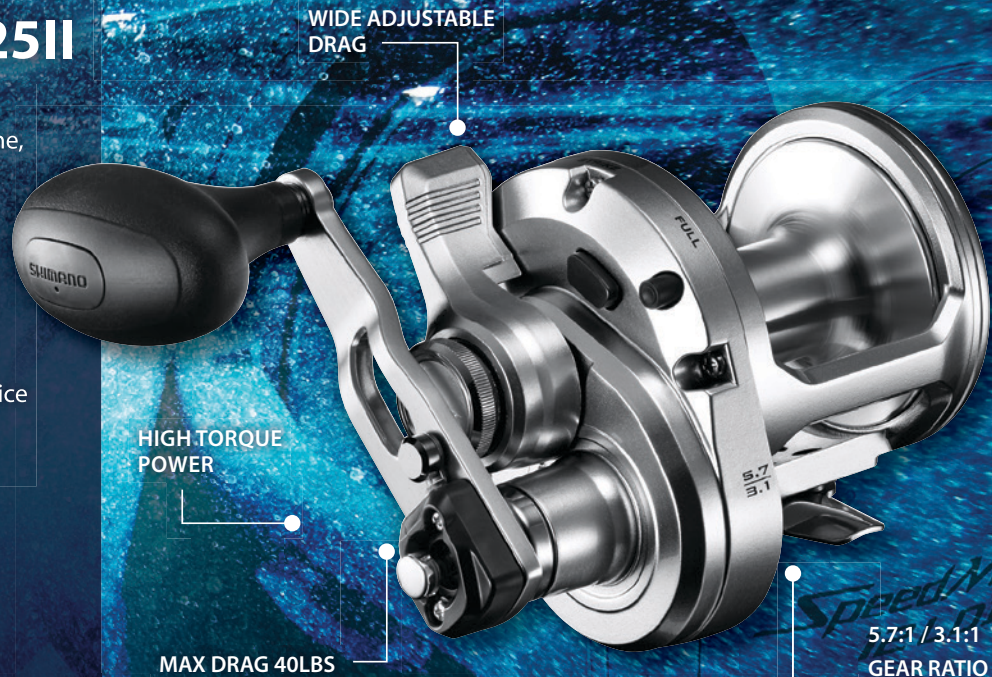
Starting at

**\$249<sup>99</sup>**



SHM-3806 SHM-4041  
SHM-3807 SHM-4042

## SpeedMaster II



### TIAGRA A TWO SPEED LEVER DRAG REELS

★★★★★ Read Reviews + Product Q & A

Tiagra reels feature an innovative hydrothermal drag system that virtually eliminates the drag setting variances that affect today's big game reels. They combine technology with years of expertise to deliver a reel that is truly superior.

Available: 12, 16, 20, 30, 30wlr, 50, 50w, 50wrl, 80, and 130

SHM-0300 thru SHM-0312

Starting at **\$429.99**



### TALICA 2 SPEED LEVER DRAG REELS

★★★★★ Read Reviews + Product Q & A

The Talica is the pinnacle of the small lever drag 2-speed market. Designed from the ground up to be an excellent casting reel with an ultra-smooth and powerful drag system to handle long battles. These reels were purposely built to take advantage of modern braided lines such as Power Pro Hollow Ace and shorter fluorocarbon leaders.

Available: 8, 10, 12, 16, 20, 25, 50

SHM-1554 - 57  
SHM-1627, SHM-1628,  
SHM-1948

Starting at **\$499.99**



## Recreational gear

Additional regional gear restrictions may apply in your county. For further clarification, contact the local regional offices listed on page 21.

### Reef fish gear rules

(applies to species marked with ● on pages 8-9)

- **Gulf of Mexico:** These regulations require the use of a dehooking device when recreationally fishing for reef fish in the Gulf of Mexico. All persons aboard a vessel harvesting reef fish must possess and use non-stainless steel non-offset circle hooks when using natural baits.
- **Atlantic Ocean:** Recreational and commercial fishers are required to use dehooking devices as needed while fishing for reef fish.

These rules apply to all members of the reef fish complex including groupers, snappers, amberjacks, red porgy, gray triggerfish, black sea bass, golden tilefish, banded rudderfish, speckled hind and others. For a complete species list, please visit MyFWC.com.

### Hook-and-line gear

Hook-and-line anglers must tend their gear at all times to prevent people, marine life and shore life from becoming entangled in the line or injured by the hook. Also, it is against the law to intentionally discard any monofilament netting or line into or onto state waters. Monofilament line can entangle birds, marine mammals, marine turtles and fish, often injuring or killing them. Trot lines with 10 or fewer hooks are considered hook-and-line gear and must be tended at all times while deployed. Species identified with "T" on pages 8 through 11 cannot be harvested with multi-hooks (single hook with two or more points) in conjunction with natural baits.

### Nets

The following types of nets may be used for recreational purposes in Florida waters:

- Bully nets (for lobster only) no greater than 3 feet in diameter and not made of monofilament.
- Frame nets and push nets (for shrimp only) no greater than 16 feet in perimeter and not made of monofilament. Frame nets cannot be used in state waters off Dade County.
- Hand-held landing or dip nets no greater than 96 inches in perimeter.
- Cast nets measuring 14 feet or less stretched length (stretched length is defined as the distance from the horn at the center of the net with the net gathered and pulled taut, to the lead line).
- Beach or haul seines measuring no larger than 500 square feet of mesh area, no larger than 2 inches stretched mesh size, not constructed of monofilament, and legibly marked at both ends with the harvester's name and address if a Florida resident. Non-residents using beach or haul seines for recreational purposes are required to have a commercial saltwater products license and legibly mark the seine at both ends with the harvester's saltwater products license number.
- Cast nets and seines may be used as harvesting gear for the following species only: black drum, bluefish, cobia, flounder, mullet, Florida pompano, red drum, sheepshead, shrimp, Spanish mackerel, weakfish and unregulated species (see p. 10).
- No more than two nets can be fished from any vessel and no more than one net can be fished by any person not on a vessel.

### Explosives, etc.

The use of powerheads, explosives, chemicals or the discharge of firearms to kill or harvest marine life is prohibited in state waters.

## Spearing

Spearing is a general term that includes bow fishing, gigging, spearfishing (underwater), or the use of any other device to capture a fish by piercing its body. Spearing does not include snagging or snatch hooking by hook and line. Marine species harvested by spearing are subject to the same recreational regulations (e.g., bag limits, size limits, and closed seasons) as those marine species that are harvested by any other type of recreationally-allowed gear. The following is a list of species or groups of species that are prohibited from harvest by all forms of spearing in state waters:

- All prohibited species (listed on p. 8-11)
- Billfish (all species)
- Bonefish
- Crab (blue, stone)
- Caribbean spiny lobster (*Panulirus argus*)
- Goliath grouper
- Manta ray
- Nassau grouper
- Permit
- Pompano (Florida and African)
- Red drum
- Sharks (all species including dogfish)
- Snook
- Spotted eagle ray
- Spotted seatrout
- Sturgeon
- Tarpon
- Tripletail
- Weakfish
- Marine life species (listed on p. 12)

\* Volusia County — You may not harvest by spearing in Volusia County inland waters with the exception of flounder and sheepshead, and only by the use of a barbed spear with three or fewer prongs.

\* Special Local Laws also prohibit harvest by spearing in specific areas (Visit MyFWC.com/ Fishing and select "Saltwater," "Recreational Regulations," "Full Text Rule by Species" and "Local Laws.")



**CALOOSA**  
**WHOLESALE**  
**SPORTSMAN SUPPLY**



**Proudly serving the U.S. tackle industry for over 42 years.**

**New Dealer Inquiries are always welcome!**

**10921 Kelly Road Suite #5, Fort Myers, FL 33908**

**239-437-2339**

**INAUGURAL TRADE SHOW October 27 & 28 in Fort Myers, FL!**

**Check website for more info!**

**www.CaloosaWholesale.com**



## SPEARING

### Spearfishing

Spearfishing is a specific form of "spearing" defined as "the catching or taking of a fish through the instrumentality of a hand or mechanically propelled, single or multi-pronged spear or lance, barbed or barbless, **operated by a person swimming at or below the surface of the water.**" In addition to the harvest species limitations above, you may not spearfish:

- For any species that cannot be harvested by spearing (see Spearing above).
- For any species (freshwater or marine) in freshwater. Possession of spearfishing equipment in or on freshwater is also prohibited.
- Within the upper Keys no-spearfishing zone, which includes all state waters from the Miami-Dade County line down to and including Long Key.
- Within 100 yards of any designated public bathing beaches, commercial or public fishing piers, or portions of bridges where fishing is allowed.
- Within 100 feet of the unsubmerged portion of any jetty, except that spearing is allowed along the last 500 yards of any jetty that extends more than 1,500 yards from the shoreline.
- In or on any body of water under the jurisdiction of the Division of Recreation and Parks of the Department of Environmental Protection. Within these areas, the possession of spearfishing equipment is also prohibited except when such equipment is un-loaded

and is properly stored upon watercraft passing nonstop through the area.

- Within the no-take areas of the Florida Keys National Marine Sanctuary (Visit: [www.floridakeys.noaa.gov](http://www.floridakeys.noaa.gov))
- Within any area where spearfishing is prohibited by a Special Local Law (Visit MyFWC.com/Fishing and select "Saltwater," "Recreational Regulations," "Full Text Rule by Species" and "Local Laws.")

### Powerheads, Bangsticks, Rebreathers

Harvest with the use of powerheads, bangsticks or rebreathers is prohibited in state waters, except that rebreathers are allowed for the harvest of lionfish. Within state waters, powerheads and bangsticks can be used for personal protection only, and cannot be used to harvest any species.

Import **HUNDREDS**  
of Waypoints  
in **SECONDS!**



Easy • Accurate • Affordable

AmericagoFishing®  
[.com/reefs-fl](http://www.americagofishing.com/reefs-fl)



## Stash the Trash!



Protect fish and wildlife. Learn how at:  
[MyFWC.com/StashTheTrash](http://MyFWC.com/StashTheTrash)

**LEE FISHER SPORTS**  
EST. 1982

High Quality Fishing Products  
at Reasonable Prices!

LINE • RODS • REELS  
HOOKS • CAST NETS  
TERMINAL TACKLE  
FISHING ACCESSORIES

Check the store near you or visit us  
[www.leefishersports.com](http://www.leefishersports.com)



# Catch a Florida Memory

Submit catches and earn rewards, all while supporting marine fisheries conservation! Catch a Florida Memory encourages anglers to target a diverse array of saltwater fish to help reduce pressure on the most commonly sought-after catches. Photos of anglers properly handling their catches are required. Learn more at [CatchaFloridaMemory.com](http://CatchaFloridaMemory.com), which was recently updated to make it easier than ever for you to submit your saltwater fish photos and reach achievements to get prizes and recognition.



## Saltwater Grand Slams

Catch three specified fish species in 24 hours from nine categories.

## Saltwater Fish Life List

Track your progress at catching 70 species of saltwater fish.

## Saltwater Reel Big Fish

Catch memorable-sized saltwater fish in 30 species categories. Anglers must submit a photo of the entire fish on a length measuring device showing that the qualifying length was reached.

## Earn Great Prizes!

- **Life List 10-Fish Club; each Grand Slam and Reel Big Fish:** Prize pack including certificate, t-shirt and tumbler.
- **Monthly raffles:** One automatic entry for each approved submission made in the last three years.
- **Recognition tier prizes:** Qualify for multiple Life List Clubs, Grand Slams and Reel Big Fish.
- **Triple Threat Club:** Prize pack including certificate, performance shirt and exclusive Triple Threat raffles.
- **Grand prizes:** Catch all eligible Grand Slams, all Reel Big Fish or all Life List species.

## Florida Saltwater Fishing Records

State all-tackle records for the heaviest fishes caught in Florida waters are maintained for 81 marine species in conventional tackle and fly-fishing categories. Successful anglers receive a certificate and custom ink fish print courtesy of Fish Print Shop.

## Partnerships

Discover Martin County, the Sailfish Capital of the World, partners with Catch a Florida Memory to provide custom tumblers for our angler prize packs as well as helping to get anglers out on the water to catch some of Florida's most exciting saltwater species. Learn more about them at [DiscoverMartin.com](http://DiscoverMartin.com), and don't forget to check out our other generous partners who help provide rewards and recognition: American Integrity Insurance Company, CCA Florida, Mount This Fish Company, Engel Coolers, SeaDek Marine Products, Smith Optics, McLean Angling, Smith's Consumer Products, Tony Ivory Art and Apparel, Ocean Waves Sunglasses, Fish Print Shop, EGO Fishing, Carlos Cardenas — Marine Artist, Reel Local, and the Fish & Wildlife Foundation of Florida. To become a partner, contact us at [AnglerRecognition@MyFWC.com](mailto:AnglerRecognition@MyFWC.com) or 850-487-0554.

## Connect with Us

- Website: [CatchaFloridaMemory.com](http://CatchaFloridaMemory.com)
- Facebook: [Facebook.com/CatchaFLMemory](https://www.facebook.com/CatchaFLMemory)
- YouTube: [MyFWC.com/SaltwaterFishing](https://www.youtube.com/SaltwaterFishing)
- Email: [AnglerRecognition@MyFWC.com](mailto:AnglerRecognition@MyFWC.com)

▶ *Anglers who have qualified for an achievement for the first time are listed in the Club Members boxes.*



Tyler Mell with an almaco jack.



**Submit catches and earn rewards!**



## New Saltwater Grand Slam Club Members

### Tier 1 – 3 Different Grand Slams:

John H. Dobbins

### Small Fry:

Alexis Rose Paul  
Cody R. Hollon  
Emily R. Hanzlik  
Morgan Waldrop

### Bay and Estuary:

John H. Dobbins  
Luke D. Ferguson  
Pierce R. Sanders  
William R. Hastings

Zain Khalid

### Family:

Alexandria J. Tallmadge  
Carrie Williams  
Dana Thrower  
Emily R. Hanzlik  
George Saridakis  
James Y Littlejohn  
Jesse W. Long  
Jim M. Breen  
Justin T. Ludlam  
Kenneth W. Murphy  
Michael D. Yannick (2)  
Morgan Waldrop

Sean T. Wilms  
Tony Hart

### Florida:

JD Malone

### Inshore:

Adrianna Galasso  
Alexander M. Krenn  
Bob A. Hoelzle  
Brandon Guynn  
Brinson Bruce  
David K. Taylor JR  
David Smith  
Dennis B. Vann

Douglas H. Vaughan III  
Ed C. Ellett  
Erick D. Rushing  
Ethan Gumble  
Gerred B. Pogge  
Jackson K. Lee  
Jeff P. Altman  
Jessica L. Long  
John McCarthy  
John Richard JR  
Johnny W. Johnson JR  
Joseph Chen  
Joshua A. Rogers  
Joshua Larsen

Ken Lai  
Kenneth W. Murphy  
Max A. Lewis  
Maximiliano Zargon  
Michael A. Krenn  
Mike Forta Ead  
Philip E. Smith  
Robert Courtney G. Ashburn  
Robert G. Ricketts  
Shannon L. Avera  
Victor Taylor  
Vince Barnes  
Wesley Nowlen

## New Saltwater Fish Life List Club Members

### 30-Fish Club:

Avera R. Williams  
Christopher K. Perry  
George Saridakis  
Katlyn M. Paul  
Mark David Huyett  
Martin Gazo  
Sean T. Wilms

### 10-Fish Club:

Alexis Rose Paul  
Amy Lockhart  
April Lipton  
Avera G. Williams  
Brady Khan  
Carrie Williams  
Casey R. Karppe  
Charles T. Douglas  
Cobey Khan  
Colton Woodie

David B. Moore II  
David R. Pennington  
David Satava  
Dwight S. Williams  
Emily R. Hanzlik  
Fred M. Wammock  
Gavin Hart  
Griffin D. Kirby  
Jack T. Textor  
Jarrad Wenzel  
Jeff Chiappini

Jesse W. Long  
John Richard JR  
John Segelken  
Jordan E. Tompkins  
Kaelyn A. Kinley  
Kevin C. Behm  
Kevin F. Schmal  
Kyle Williams  
Lane E. Warnick  
Maggie Allen  
Mark D. Junkins

Mason Hallberg  
Matt Corvin  
Michael Arana  
Robert Buzaki  
Robert F. Connor JR  
Sarah Caselnova  
Steve D. Bond JR  
Thomas Waldrop  
Trevor A. Beaman

## New Triple Threat Club Members

### Have attained a Grand Slam, Reel Big Fish AND Life List Club

Alexis Rose Paul  
Cameron E. Mein  
Emily R. Hanzlik

Gavin Hart  
Gregory Lee McConnell  
Jesse W. Long

Olivia C. North-Menthonnex  
Robert F. Connor JR  
Steve D. Bond JR

## New Florida Saltwater Fishing Records

**Bigeye Tuna:**  
Anthony Beau Kelly

## New Saltwater Reel Big Fish Club Members

### Tier 1 – 5 Different Species:

Sean T. Wilms

### Almaco Jack:

Sean T. Wilms

### Black Drum:

Olivia C. North-Menthonnex

### Bluefish:

Kassidy Dieter  
Sean T. Wilms

### Crevalle Jack:

Emily R. Hanzlik  
Kevin F. Schmalz  
Trevor A. Beaman

### Flounder:

Jordan Coston

### Gray Triggerfish:

Devin Sanderson

### King Mackerel:

Brett Ambroson  
Owen Ambroson  
Trevor A. Beaman

### Ladyfish:

Veronica Brasher

### Mutton Snapper:

John Georgiades  
Olivia Ambroson  
Owen Ambroson  
Robert Horne  
Trevor A. Beaman

### Red Drum:

Adrianna Galasso  
Alexander M. Krenn  
Amanda R. Slone  
Avera R. Williams

Beck Mowrey  
Chris Havens  
Colton Woodie  
Dalton L. Avera  
Daniel T. Morgan  
David C. Deliere  
Elijah Booten  
Garrett Hart  
Gavin Altman  
Gavin Hart  
Gregory Lee McConnell  
Jeff P. Altman  
Jesse W. Long  
John McCarthy  
Katey Pasco  
Ken Lai  
Masyn M. Rogers  
Matthew Stephen  
Batchelor  
Steve P. Thompson  
Thomas C. Wolanzyk

William W. Williams

### Red Porgy:

Alexis Rose Paul

### Sheepshead:

Joel Abo  
Steven Damian Self

### Snook:

Amy Lockhart  
Edward Smith  
Emily R. Hanzlik  
Greg John Knothe  
Mazzy Tateishi  
Roy Magnuson  
Thomas Waldrop  
Timothy J. Dyer SR

### Spanish Mackerel:

Cameron E. Mein  
Matthew Bertoncini  
Samuel R. Hastings

### Spotted Seatrout:

Anthony James Watson  
Clifton Gagliano  
Colton Woodie  
Dalton L. Avera  
Dan Nedvidek  
David C. Deliere  
Elijah Booten  
Fred M. Wammock  
G L. McMahon  
Hunter Leaptrott  
Joshua A. Rogers  
Lucas Leaptrott  
Matthew Leonard Paredes  
Mazzy Tateishi  
Richard Windmann  
Roy Magnuson  
Tanya M. Arendes  
Travis Reed Anderson

# LICENSES AND PERMITS

Florida resident saltwater licenses	
Saltwater licenses cover both watercraft and shoreline fishing.	
Annual Saltwater License	\$17.00
Youth Saltwater Fishing License — valid until 17th birthday	\$17.00
Five-Year Saltwater License	\$79.00
Annual Saltwater Shoreline License	\$0.00
Covers saltwater fishing only from shorelines and attached structures accessible by foot. Does not cover fishing from a watercraft, fishing from a shoreline reached by watercraft, or fishing while swimming or diving.	
Non-resident saltwater licenses	
Three-day Saltwater License	\$17.00
Seven-day License	\$30.00
Annual License	\$47.00
Saltwater permits – residents and non-residents	
Annual Snook Permit	\$10.00
Five-Year Snook Permit (Florida residents only)	\$50.00
Annual Spiny Lobster Permit	\$5.00
Five-Year Spiny Lobster Permit (Florida residents only)	\$25.00
Tarpon Tag (available only at tax collector offices)	\$51.50
Unless exempt from license requirements, permits are necessary for the take of Snook and Spiny Lobster. Tarpon tags required to land tarpon.	
Information for additional saltwater permits and designations	
NEW! State Reef Fish Angler Designation – those fishing for reef fish from a private vessel in Gulf and Atlantic waters. No exemptions except youth under age 16.	\$0.00
Annual Shore-Based Shark Fishing Permit	\$0.00
Annual Blue Crab Trap Registration	\$0.00
Annual Stone Crab Trap Registration	\$0.00
These new no-cost permits are available online only at GoOutdoorsFlorida.com. Youth under age 16 are exempt. No other exemptions apply.	

Florida resident combination licenses	
Annual Saltwater and Freshwater Fishing	\$32.50
Annual Saltwater and Freshwater Fishing and Hunting	\$48.00
Gold Sportsman's Licenses	
Includes Saltwater and Freshwater Fishing and Hunting licenses and Snook, Spiny Lobster, Management Area, Archery, Crossbow, Muzzleloading, Deer, Turkey and Waterfowl permits.	
Annual Gold Sportsman's License	\$100.00
Five-Year Gold Sportsman's License	\$494.00
Youth Gold Sportsman's License — valid until 17th birthday	\$100.00
Annual Military Gold Sportsman's License	\$20.00
Includes the same licenses and permits as the Gold Sportsman's License. Available for Florida residents who are active duty or retired military members of the U.S. Armed Forces, Armed Forces Reserve, Florida National Guard, Coast Guard or Coast Guard Reserve at county tax collectors' offices with current military identification card or at GoOutdoorsFlorida.com through an online verification process.	
Florida Resident Lifetime Saltwater Fishing licenses	
Includes Saltwater Fishing license and Snook and Spiny Lobster permits	
Age: 0–4	\$126.50
Age: 5–12	\$226.50
Age: 13 or older	\$301.50
Florida Resident Lifetime Gold Sportsman's licenses	
Includes Saltwater and Freshwater Fishing and Hunting licenses and Snook, Spiny Lobster, Management Area, Archery, Crossbow, Muzzleloading, Deer, Turkey and Waterfowl permits.	
Age: 0–4	\$401.50
Age: 5–12	\$701.50
Age: 13 or older	\$1,001.50

## Saltwater fishing in Florida – what to know before you go:

Saltwater fishing licenses can be obtained online at GoOutdoorsFlorida.com, at county tax collectors' offices and license agents, or by calling toll-free 888-FISH-FLORIDA (347-4356). All sales are final. Handling fees apply for telephone and Internet sales. For more information on recreational licensing information, visit MyFWC.com/License.

## For purposes of saltwater fishing in Florida, a resident is defined as:

- Any person who has declared Florida as his or her only state of residence as evidenced by a valid Florida driver license or identification card with both a Florida address and a Florida residency verified by the Department of Highway Safety and Motor Vehicles (HSMV). A Florida voter registration card, declaration of domicile, or homestead exemption may also be used as proof of Florida residency.
- Active duty United States military personnel stationed in Florida, including spouses and dependent children residing in the household, with military orders.

## Saltwater license exemptions:

- Youth under 16 years of age.
- Florida resident age 65 or older with proof of age and residency, such as a Florida driver's license or identification card.
- Florida resident fishing within his or her county of residence with live or natural bait, using poles or lines not equipped with a fishing line retrieval mechanism.
- Florida Resident Persons with Disabilities Hunting and Fishing License holder. Information at MyFWC.com/ADA.
- Florida resident accepted as a client for developmental disabilities services by the Agency for Persons with Disabilities, with agency proof thereof.
- Florida resident saltwater fishing from land or a structure fixed to land who has been determined eligible for the food stamp, temporary cash assistance, or Medicaid Program by the Department of Children and Family Services. Must have proof of identification and a benefit issuance or program identification card issued by the Agency for Persons with Disabilities or the Agency for Health Care when fishing.
- U.S. Armed Forces members who is a Florida resident not stationed in the state but home on leave with orders for 30 days or less. Does not include family members.
- Individual commercial saltwater products license holders.

- Those recreationally fishing from a pier that has a pier saltwater fishing license.
- Fishing from a for-hire vessel (including guide, charter, party boat) that has a valid charter boat or charter captain license.
- Fishing from a boat that has a recreational vessel fishing license.
- A Florida resident who is fishing for mullet in freshwater with a valid Florida freshwater fishing license.

## More saltwater fishing licenses – available at Tax Collectors' office:

Charter Boat and Charter Captain licenses are available and required to carry paying customers (where a fee is paid directly or indirectly) to take, attempt to take, or possess saltwater fish or organisms. Guides must comply with U.S. Coast Guard (USCG) requirements.

- Four or fewer customers ..... \$201.50
- Five to ten customers ..... \$401.50
- Eleven or more customers ..... \$801.50

**Recreational Vessel licenses** are available for not-for-hire pleasure crafts that are registered recreationally for a fee of \$2,001.50.

**Pier licenses** are available for \$501.50 annually and exempt persons fishing from a pier fixed to land from saltwater fishing requirements.



# Florida Fish and Wildlife Conservation Commission



## Managing fish and wildlife resources for their long-term well-being and the benefit of people.

620 South Meridian Street  
Farris Bryant Building  
Tallahassee, FL 32399-1600  
(850) 488-4676  
(800) 955-8771 TDD

### Commissioners

**Robert A. Spottswood**  
Chairman, Key West

**Michael W. Sole**  
Vice Chairman, Tequesta

**Rodney Barreto**  
Coral Gables

**Steven Hudson**  
Ft. Lauderdale

**Gary Lester**  
Oxford

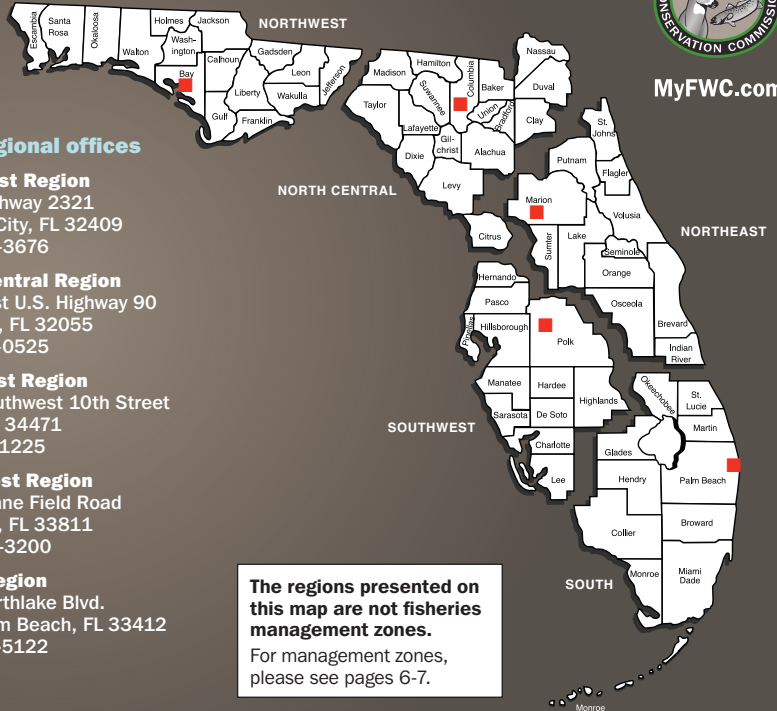
**Gary Nicklaus**  
Jupiter

**Sonya Rood**  
St. Augustine

### Staff

**Eric Sutton**  
Executive Director

**Dr. Thomas H. Eason**  
Assistant Executive Director



### FWC regional offices

- **Northwest Region**  
3911 Highway 2321  
Panama City, FL 32409  
850-265-3676
- **North Central Region**  
3377 East U.S. Highway 90  
Lake City, FL 32055  
386-758-0525
- **Northeast Region**  
1239 Southwest 10th Street  
Ocala, FL 34471  
352-732-1225
- **Southwest Region**  
3900 Drane Field Road  
Lakeland, FL 33811  
863-648-3200
- **South Region**  
8535 Northlake Blvd.  
West Palm Beach, FL 33412  
561-625-5122

MyFWC.com

The regions presented on this map are not fisheries management zones. For management zones, please see pages 6-7.

The FWC's Division of Law Enforcement patrols Florida's coastal waters to provide assistance to boaters and anglers as well as to enforce Florida's saltwater fishing and boating laws. FWC officers assist boaters who are in distress, provide advice and direction to those who

are traveling Florida's coastline and waterways, and may issue citations for violations of state and federal fishing, wildlife and boating laws.

In emergencies or if state fisheries, wildlife or boating laws are being violated, call 888-404-FWCC (3922) or for cell phone users

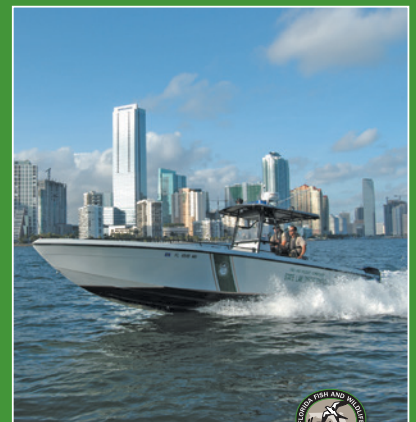
throughout the state, dial \*FWC (\*392) depending on your location, hail on VHF Channel 16 or report violations via text message. Most cell phones allow users to send text messages directly to an email address. You can text Tip@MyFWC.com; standard usage fees may apply.

## Resource Information

Join the nation's largest conservation law enforcement agency—become an FWC law enforcement officer. For more information contact the Florida Fish and Wildlife Conservation Commission at 1-866-FWC-HIRE (392-4473) or visit MyFWC.com/Law

- To purchase fishing licenses:**  
888-FISH-FLORIDA (347-4356)  
GoOutdoorsFlorida.com
- FWC Division of Law Enforcement**  
888-404-FWCC (3922)
- To report fish and wildlife law violations, call the Wildlife Alert Hotline:**  
888-404-FWCC (3922)
- FWC Fish and Wildlife Research Institute**  
727-896-8626  
MyFWC.com/Research
- To report fish kills:**  
800-636-0511
- To report fish tags:**  
800-367-4461  
TagReturn@MyFWC.com
- To report sawfish sightings:**  
941-255-7403  
sawfish@MyFWC.com
- Bird entanglement**  
888-404-3922  
727-391-6211 for Tampa area
- Red tide information hotline**  
866-300-9399 toll free in Florida  
727-552-2488 nationwide
- Aquatic toxins hotline:** 888-232-8635
- Shellfish harvesting questions**  
FDACS, 850-617-7600  
https://www.fdacs.gov/Divisions-Offices
- To report lionfish sightings:**  
1-877-786-7267  
MyFWC.com/Lionfish

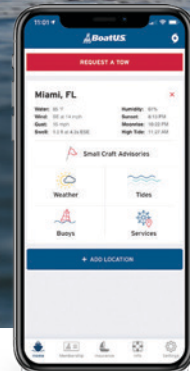
## At the FWC, it pays to love the outdoors!



Visit MyFWC.com to learn how to become an FWC officer.



An Average Tow is \$750  
**LET US PICK UP THE TAB**



**UNLIMITED TOWING \$159\***

Breakdowns happen more often than you'd expect...pay a little now to avoid an expensive bill later. Get a BoatU.S. Unlimited Towing Membership today, for a year of worry-free boating.

**JOIN TODAY!** BoatUS.com/Towing or 800-395-2628

**GET THE APP – IT'S THE FASTEST WAY TO GET A TOW**



\*One year Saltwater Membership pricing. Details of services provided can be found online at BoatUS.com/Agree. TowBoatU.S. is not a rescue service. In an emergency situation, you must contact the Coast Guard or a government agency immediately.